

Table of Contents

PAGE	DESCRIPTION
1	Schematic Block Diagram
2	Front Page
3	CLOCK GENERATOR
4-7	Auburndale CPU
8-13	Ibex Peak-M
14-15	DDRIII SO-DIMM
16-22	Discreate VGA (M92-XT)
23	LCD + Camera Conn.
24	HDMI Conn.
25	CRT Conn.
26	Audio Codec ALC269
27	RTL8111DL
28	SATA HDD & ODD
29	USB x 2 & ESATA
30	USB X2/SIM_CARD/LEDs/RF
31	MINI-Card (UWB & WWAN)
32	MINI-Card (WLAN)
33	ONFI
34	Express Card
35	K/B & T/P
36	BLUETOOTH
37	FAN & Thermal
38	G-Sensor
39	B To B Conn.
40	iTPM & RFID EEPROM
41	KBC IT8502E
42	HOLD & SKEW
43	Discharge
44	Charger
45	DDR3 (TPS5116REGR)
46	1.05V_VTT & 1.05_PCH (RT8204)
47	3V/5V (MAX17101)
48	CPU (MAX17082)
49	DIS_GFX_VCC (MAX8792)
50	DIS_1.8V_RUN (OZ8116LN)
51	Power Block Dianram
52	XDP
53	Revision & Schematic Value Description
54	BOM Matrix Table

Power States

POWER PLANE	VOLTAGE	PAGE	DESCRIPTION	CONTROL SIGNAL	ACTIVE IN
VIN	10V~+20V	23,32,43,44,45,46,47,48,49,50	MAIN POWER		S0-S5
+3VRTC	+3.0V~+3.3V	9,12,41	RTC		S0-S5
3VPCU	+3.3V	9,23,27,30,32,35,39,41,43,44,47	ITE8052 POWER	3V5V_EN	S0-S5
5VPCU	+5V	14,43,44,45,46,47,49,50	DC/DC POWER IC SOURCE	3V5V_EN	S0-S5
+15V	+15V	23,38,43,45,46,47	LARGE POWER	3V5V_EN	S0-S5
LANVCC	+3.3V	27,43	LAN POWER	LAN_ON	
5V_S5	+5V	12,29,30,43	PCH SUS POWER	S5_ON	S0-S3
3V_S5	+3.3V	8,9,10,11,12,43,52	Sys Management,PCH Resume Well, Intel HD Audio,USB,WLAN WiMAX POWER	S5_ON	S0-S3
5VSUS	+5V	23,39,43,48	SLP_S4# CTRLD POWER	SUSON	S0-S3
3VSUS	+3.3V	14,15,30,34,41,43,49	SLP_S4# CTRLD POWER	SUSON	S0-S3
1.5VSUS	+1.5V	4,6,14,15,43,45,46,49,50	SODIMM POWER	SUSON	S0-S3
0.75VSMDDR_VTERM	+0.75V	14,15,43,45	DDR3 SODIMM REFERENCE POWER	MAIN_ON	S0
+5V	+5V	12,18,23,24,25,26,28,35,37,41,43,44	SLP_S3# CTRLD POWER	MAIN_ON	S0
+3V	+3.3V	3,4,8,9,10,11,12,14,15,17,23,25,26,27,28,29,30,31,32,33,34,36,37,38,39,40,41,43,44,45,46,47,48,50,52	SLP_S3# CTRLD POWER	MAIN_ON	S0
+1.8V	+1.8V	6,12,17,18,21,22,33,43,50	LVDS,NVM POWER	MAIN_ON	S0
+1.5V	+1.5V	12,18,19,20,31,32,34,45,46	Mini PCIe,Express Card POWER	MAIN_ON	S0
+1.05V_VTT	+1.05V	4,6,11,12,43,46,48,52	AuBurndale VTT POWER	MAIN_ON	S0
+1.05V_PCH	+1.05V	3,10,12,43,46,52	PCH CORE POWER	1.05V_RUN_ON	S0
+VCC_GFX_CORE	+0.9V~+1.2V	18,21,43,49	VGA CORE POWER	GFXVR_EN	S0
VCC_CORE		6,43,48	CPU CORE POWER	VRON	S0
LCDVCC	+3.3V	23	LCD Power	ENVDD	S0
+5V_ODD	+5V	28	ODD Power	MAIN_ON	S0
+5V_HDD	+5V	28	HDD Power	MAIN_ON	S0
BAT-V	+10V~+17V	44	MAIN BATTERY	CHG_PBATT	S0-S5



PROJECT : LL5A
Quanta Computer Inc.

Size
A3

Document Number

FRONTPAGE

Rev
1B

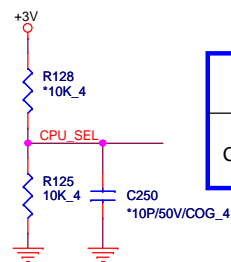
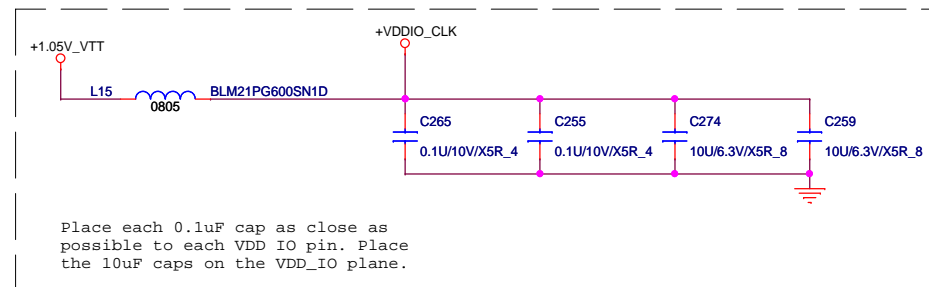
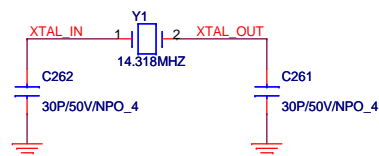
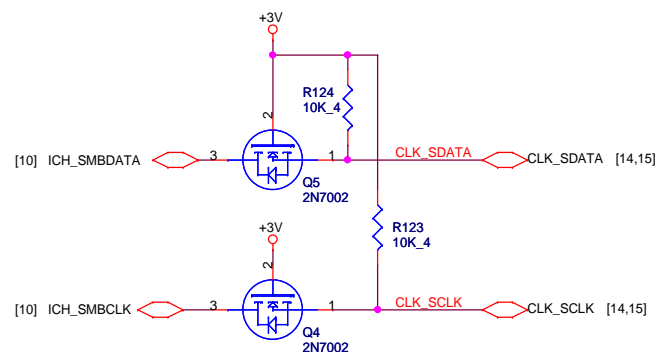
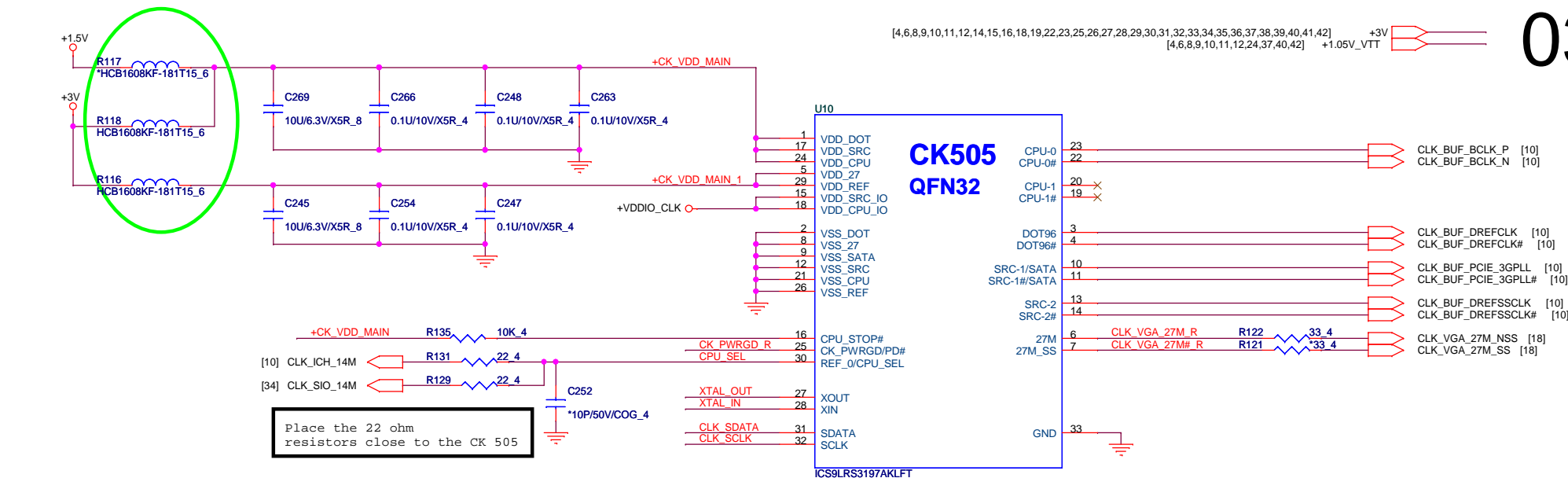
Date:

Tuesday, October 20, 2009

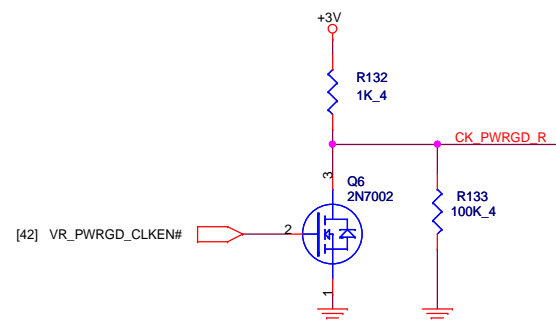
Sheet

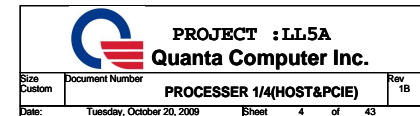
2 of

43



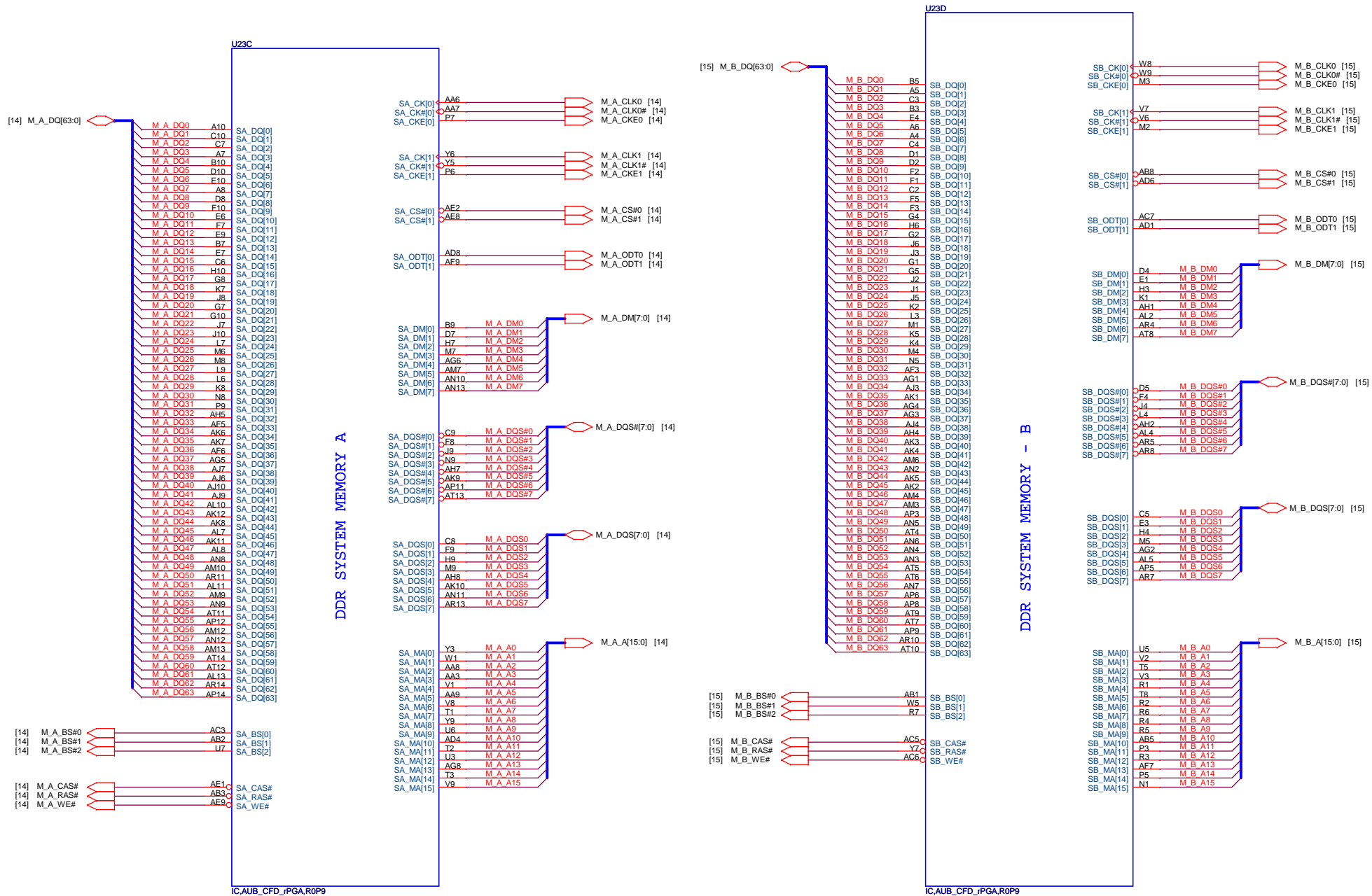
	0	1
CPU_SEL	CPU0/1=133MHz (default)	CPU0/1=100MHz

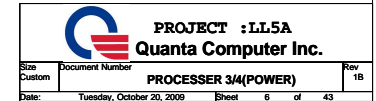




AUBURNDALE PROCESSOR (DDR3)

05

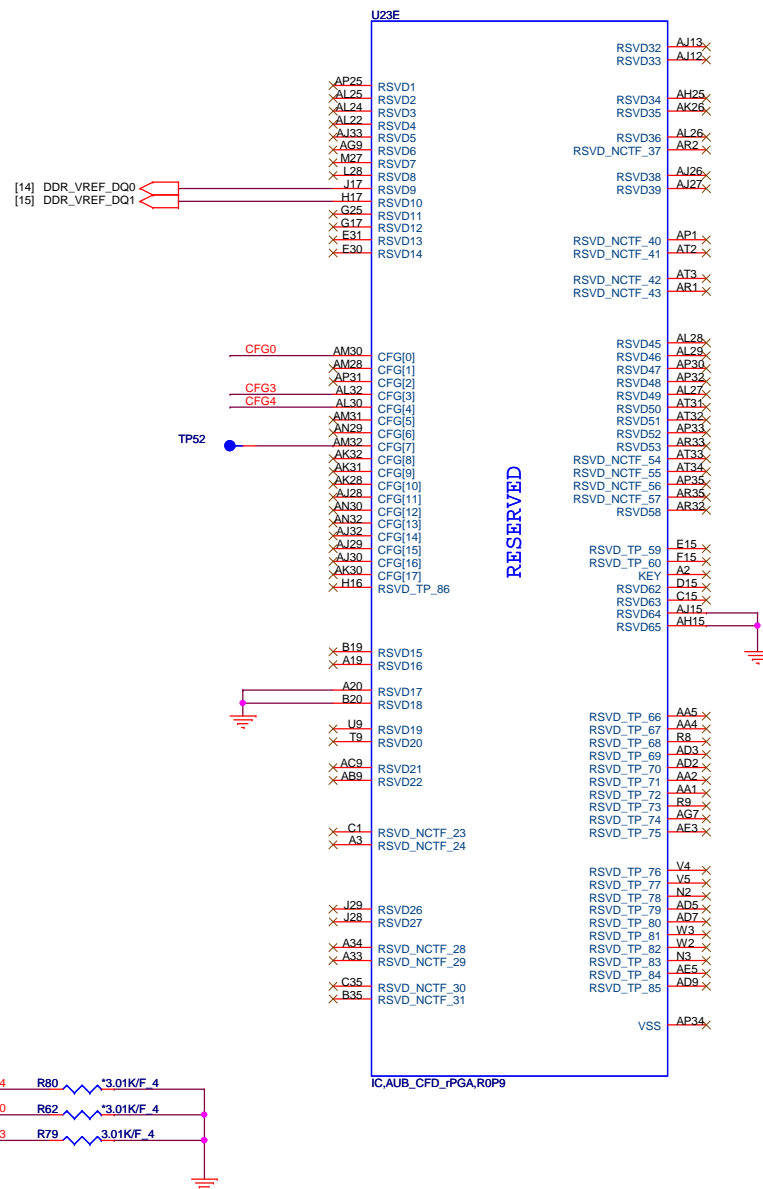
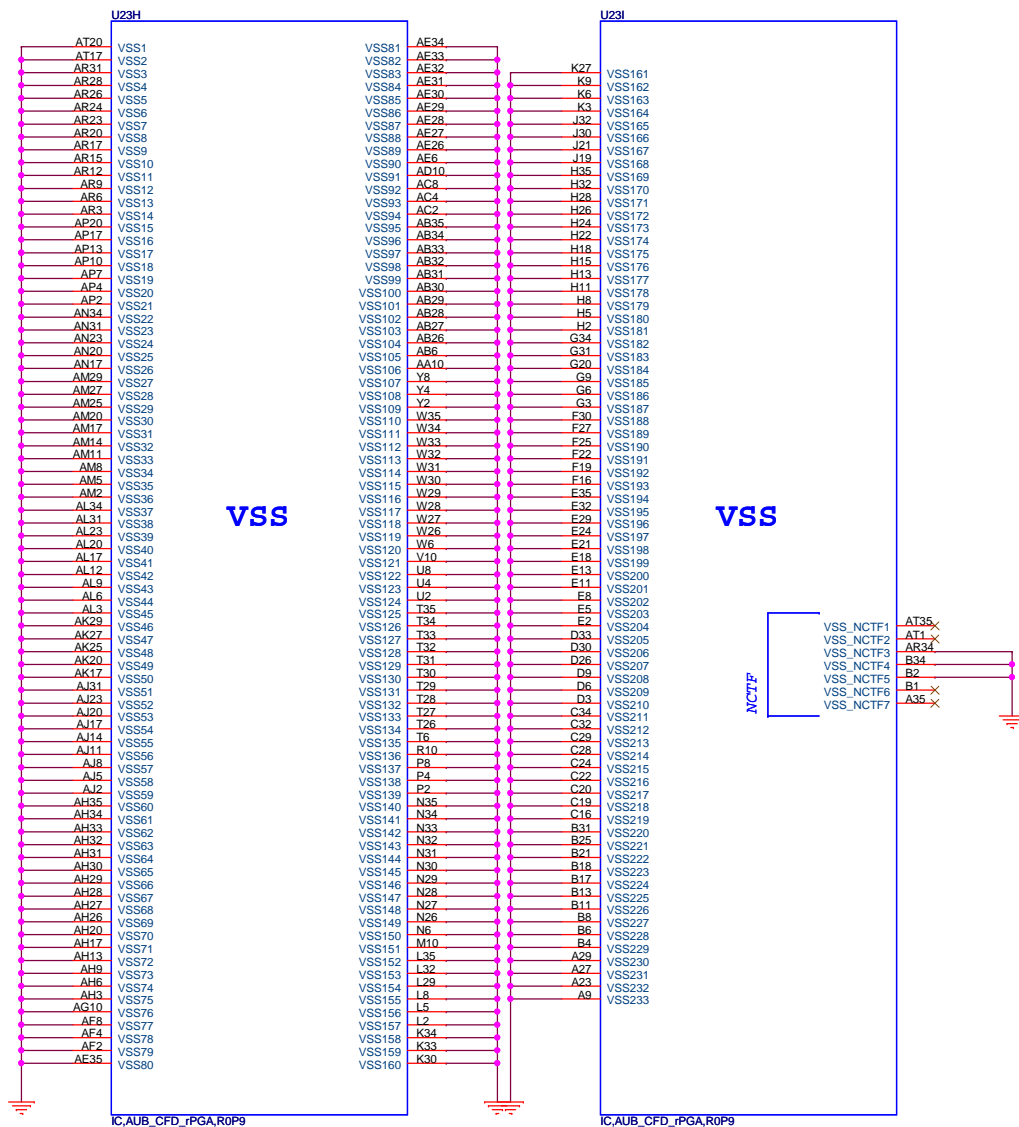




AUBURNDALE PROCESSOR (GND)

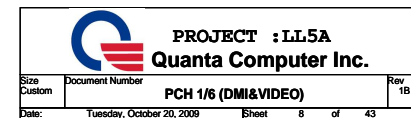
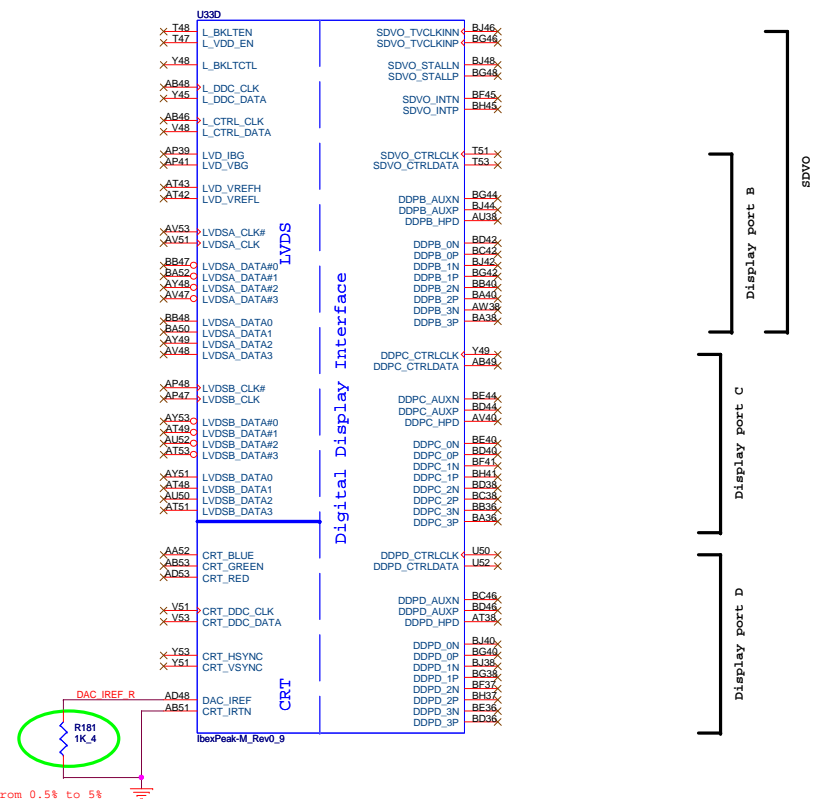
AUBURNDALE PROCESSOR(RESERVED, CFG)

07



	1	0
CFG4 (Display Port Presence)	Disabled; No Physical Display Port attached to Embedded Display Port	Enabled; An external Display port device is connected to the Embedded Display port
CFG0 (PCI-Epress Configuration Select)	Single PEG	Bifurcation enabled
CFG3 (PCI-Epress Static Lane Reversal)	Normal Operation	Lane Numbers Reversed

IBEX PEAK-M (LVDS,DDI)

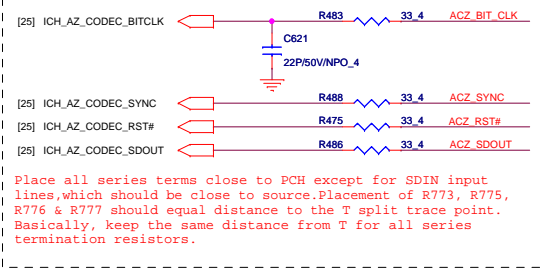
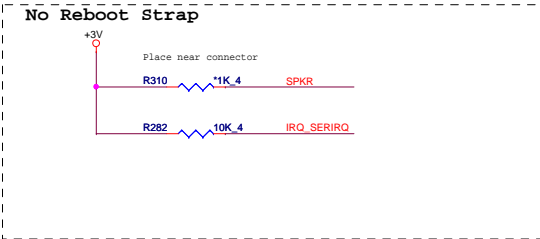
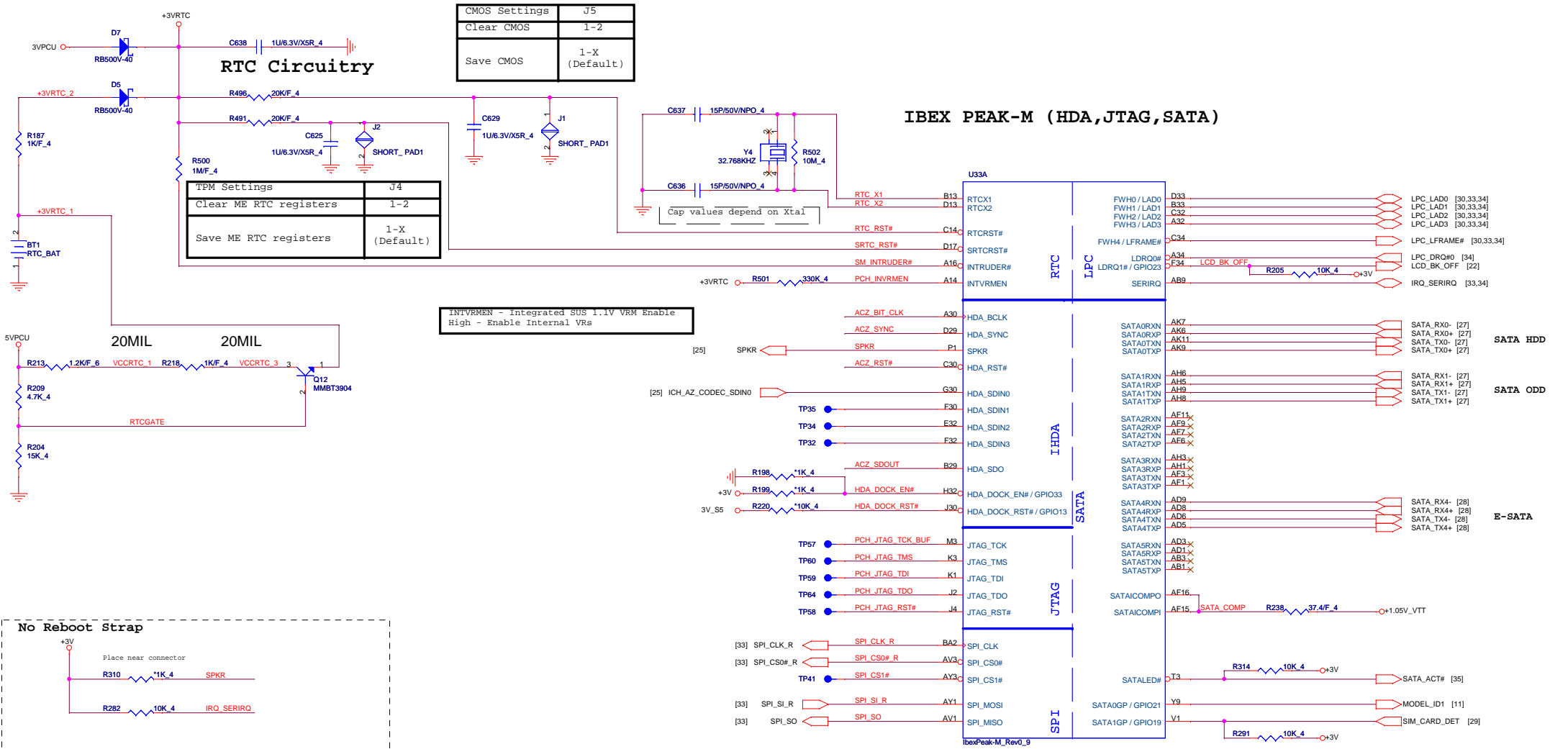


RTC Circuitry

CMOS Settings	J5
Clear CMOS	1-2
Save CMOS	1-X (Default)

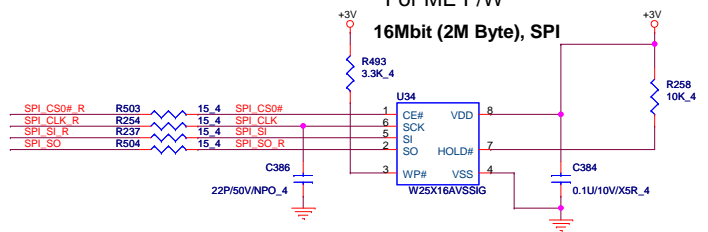
TPM Settings	J4
Clear ME RTC registers	1-2
Save ME RTC registers	1-X (Default)

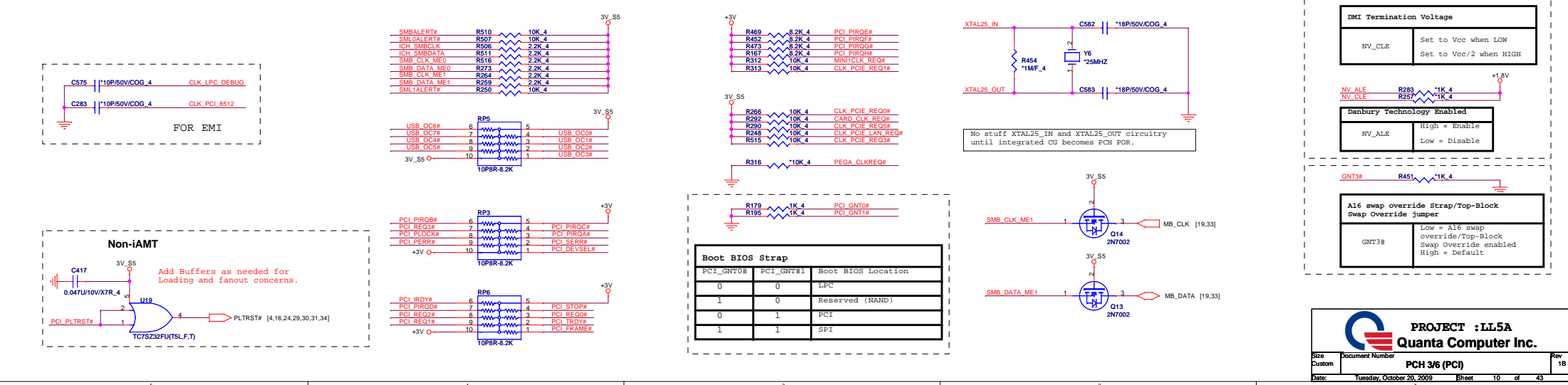
IBEX PEAK-M (HDA,JTAG,SATA)



iTPM ENABLE/DISABLE

TPM Function	R292
Enable	Stuff
Disable	NC (Default)

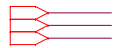




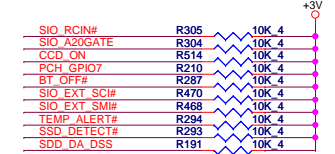
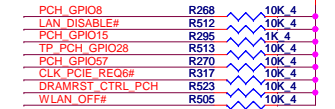
IBEX PEAK-M (GPIO,VSS_NCTF,RSVD)

[3,4,6,8,9,10,12,14,15,16,18,19,22,23,25,26,27,28,29,30,31,32,33,34,35,36,37,38,39,40,41,42]
[4,8,9,10,12,24,30,37]
[3,4,6,8,9,10,12,24,37,40,42]

+3V
3V_S5
+1.05V_VTT

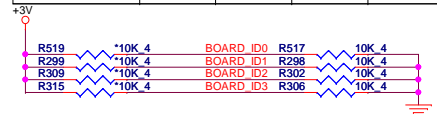


11



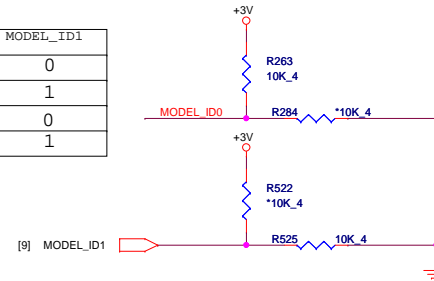
Board ID

Board ID For Function	ID3 GPIO39	ID2 GPIO38	ID1 GPIO37	ID0 GPIO36
SDV	0	0	0	0
SIV	0	0	0	1
SIT	0	0	1	0
SVT	0	0	1	1
SOVP	0	1	0	0



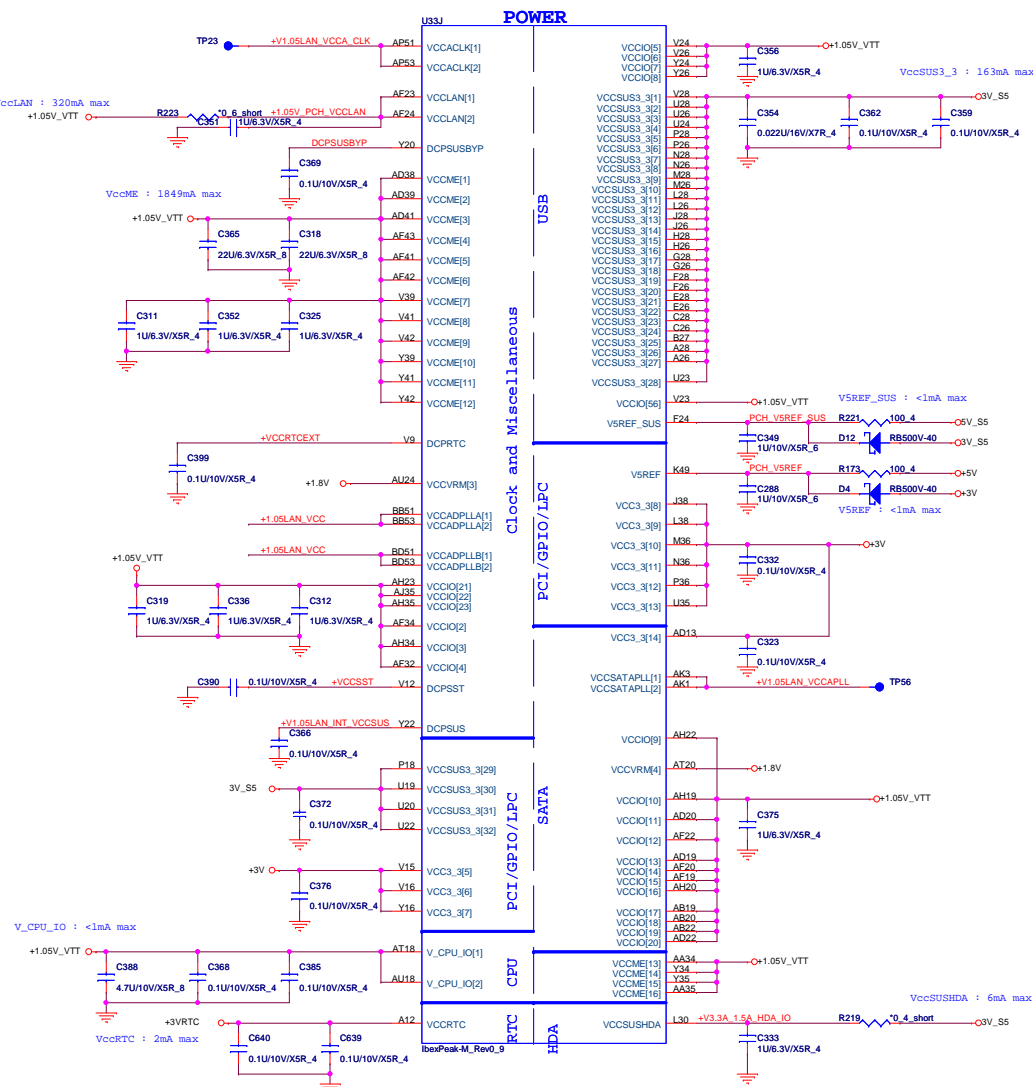
Model ID

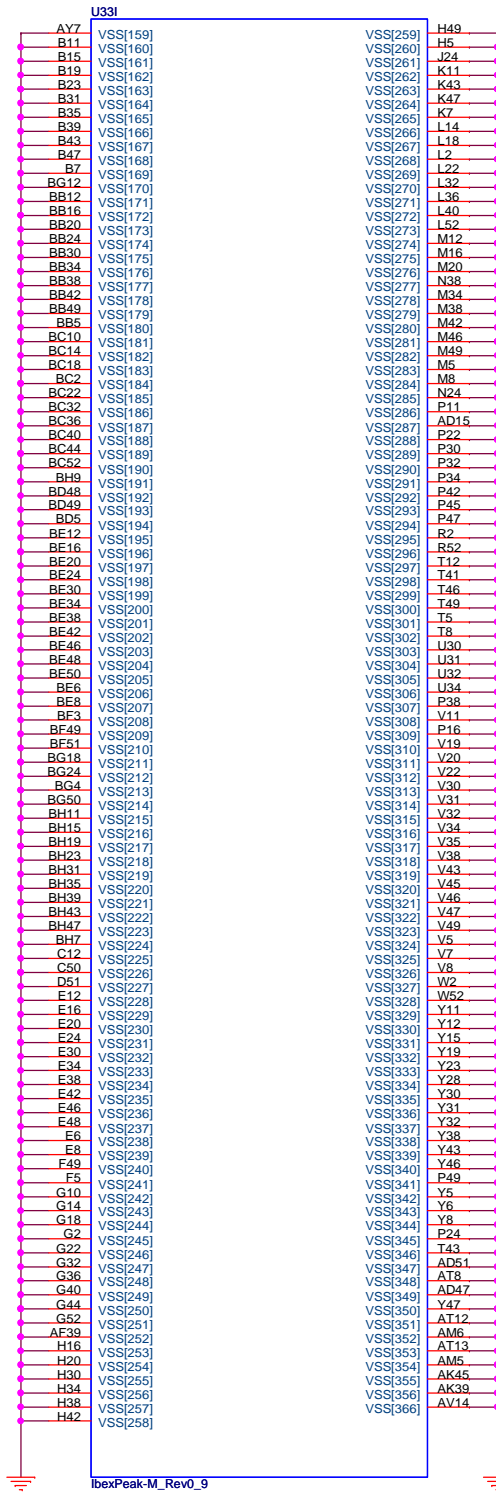
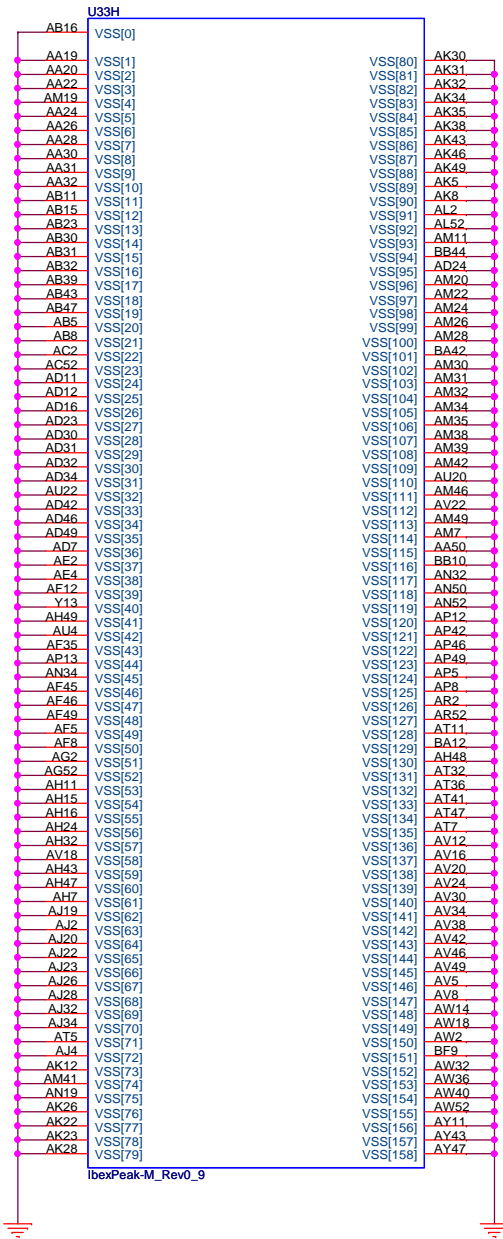
Model ID	MODEL_ID0	MODEL_ID1
Default	0	0
LL3/LL3A	0	1
LL5/LL5A	1	0
	1	1

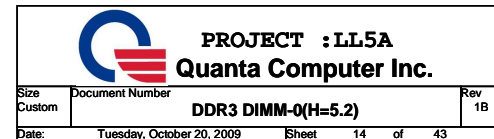
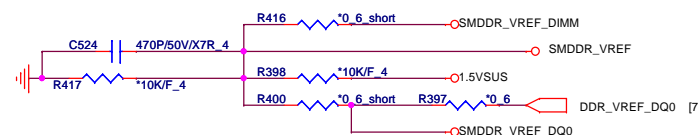


SV_SET_UP 1-X High = Strong (Default)

PROJECT :LL5A
Quanta Computer Inc.



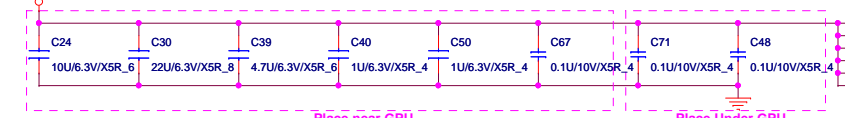




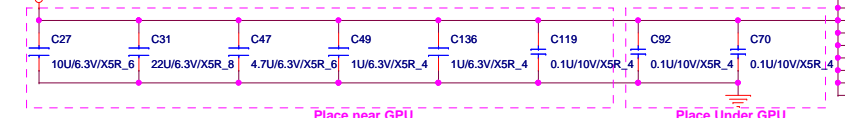


+1.05V_GFX_PCIE

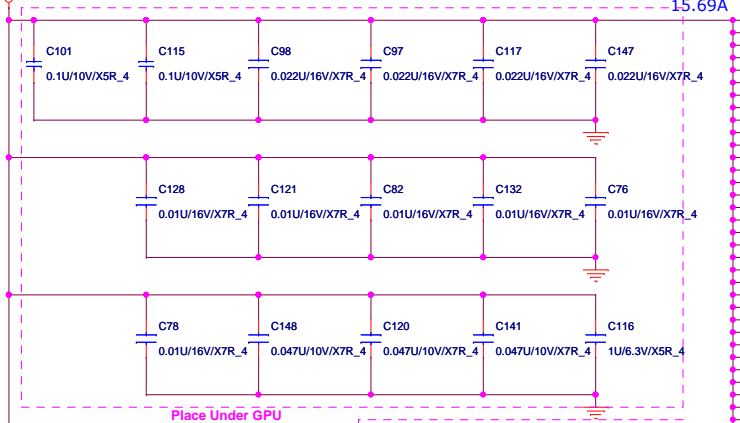
PEX_IOVDD+PEX_IOVDDQ:2A



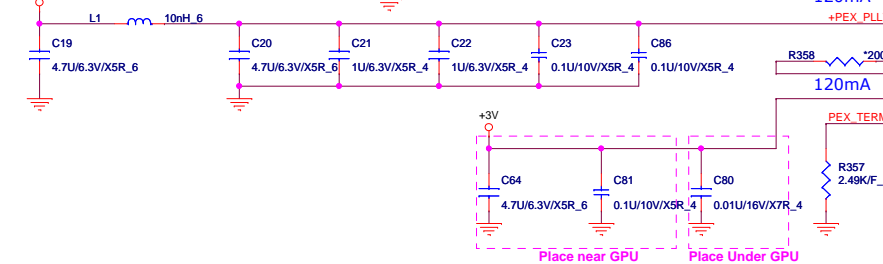
+1.05V_GFX_PCIE



+VCC_GFX_CORE



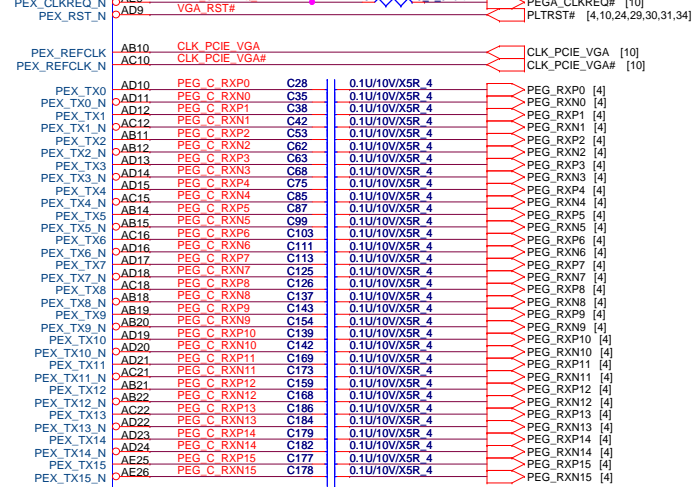
+1.05V_GFX_PCIE



U24A

PBGA533-NVIDIA-GEFORCE6250
EV81010M

1/13 PCI_EXPRESS



W15
W16

A12
B12
C12
D12
E12
F12

VDD33_01
VDD33_02
VDD33_03
VDD33_04
VDD33_05
VDD33_06

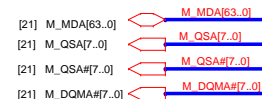
PEX_PLLVDD

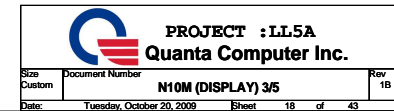
PEX_TSTCLK_OUT_N
PEX_TSTCLK_OUT

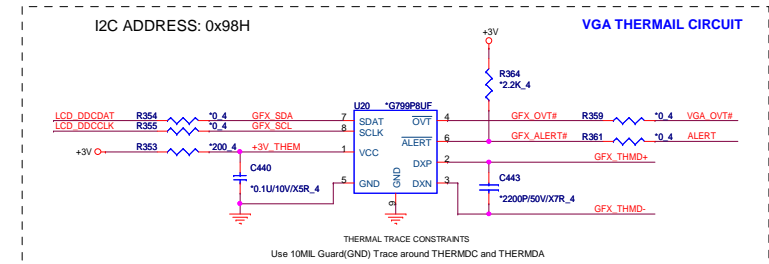
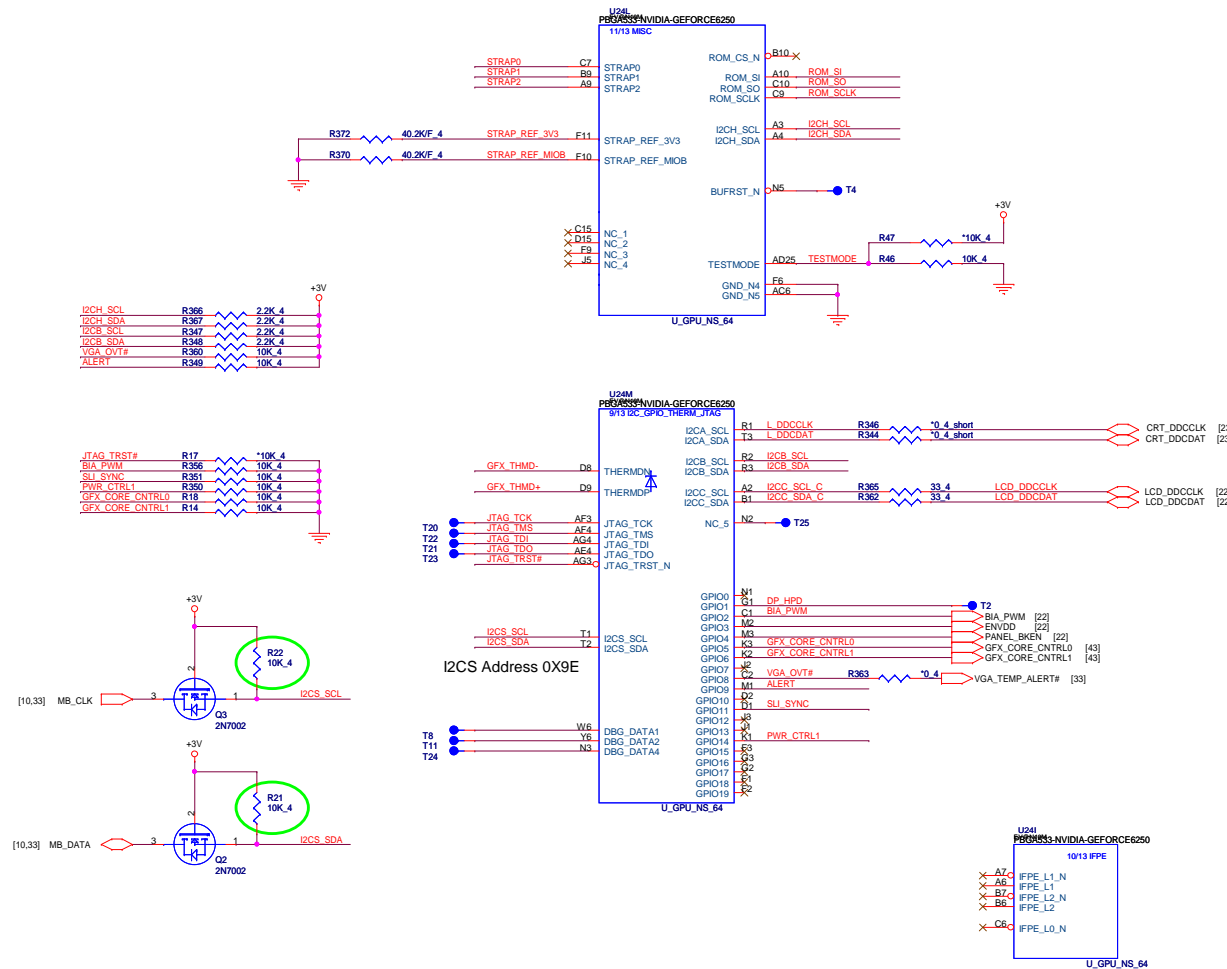
PEX_SVDD_3V3

PEX_TERM

U_GPU_NS_64





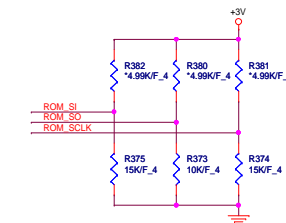


LL5A STRAP FUNCTION MAPPING

USER[3:0]: 1111	EDID is used
3GIO_PADCFG[3:0]: 0001	NoteBook
PCI_DEVID[3:0]: 0001	
SUB_VENDOR: 0	No Vedio BIOS ROM
SLOT_CLK_CLG: 1	GPU AND MCH USE COMMON REF CLOCK
PEX_PLL_EN_TERM: 0	DISABLE PEX_PLL TERMINATION
RAMCFG[3:0]: 0010 AND 0011	
XCLK_417: 0	277MHz(Default)
FB_0_BAR_SIZE: 0	256MB(Default)
SMB_ALT_ADDR: 0	0x9E(Default)
VGA_DEVICE: 1	VGA device(Default)

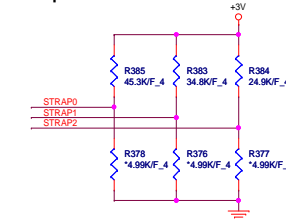
ROM_SI	RAMCFG LSIT:
PD R9064:20K/F	0011 SAMSUNG K4W1G1646E-HC12 64M16b * 4PCS
PD R9064:15K/F	0010 HYNIX H5TQ1G63BFR-12C 64M16b * 4PCS

PCI_DEVID[4] / SUBVENDOR

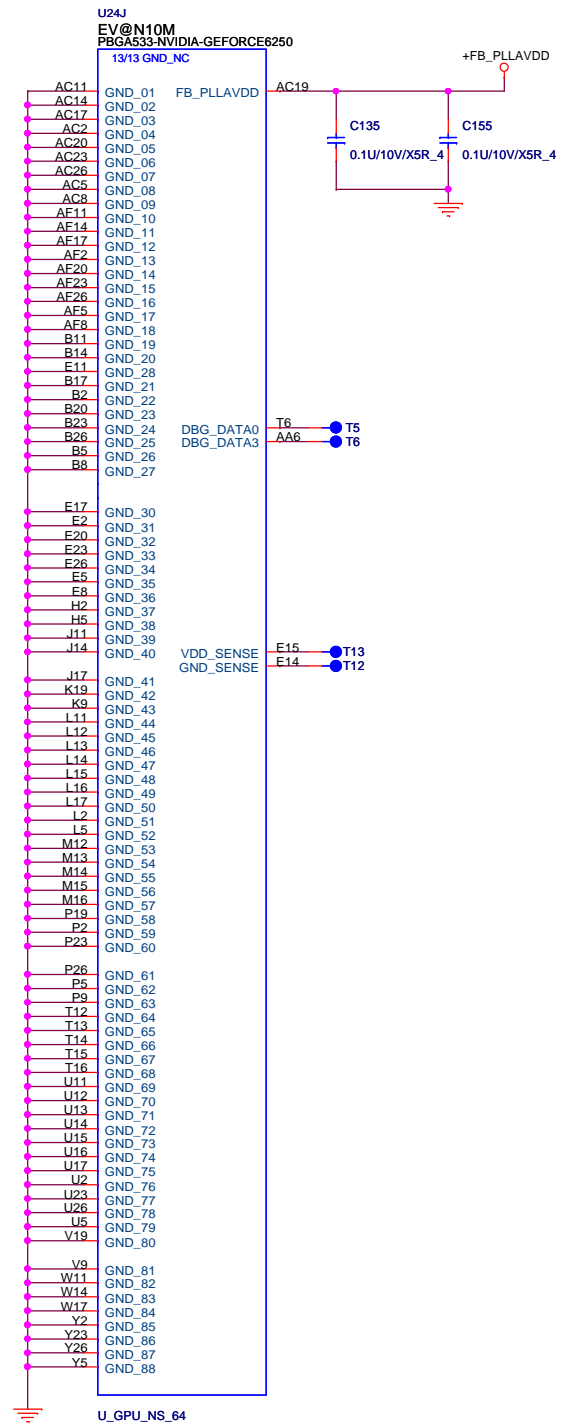


Logical Strap Bit Mapping

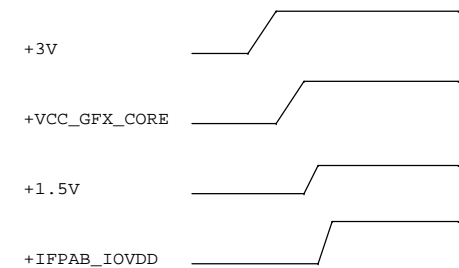
Straps



	PU	PD
5K	1000	0000
10K	1001	0001
15K	1010	0010
20K	1011	0011
25K	1100	0100
30K	1101	0101
35K	1110	0110
45K	1111	0111

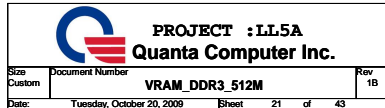


power up sequence

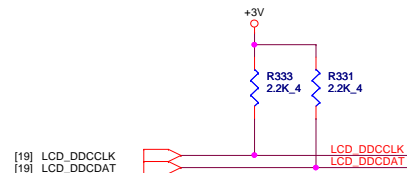
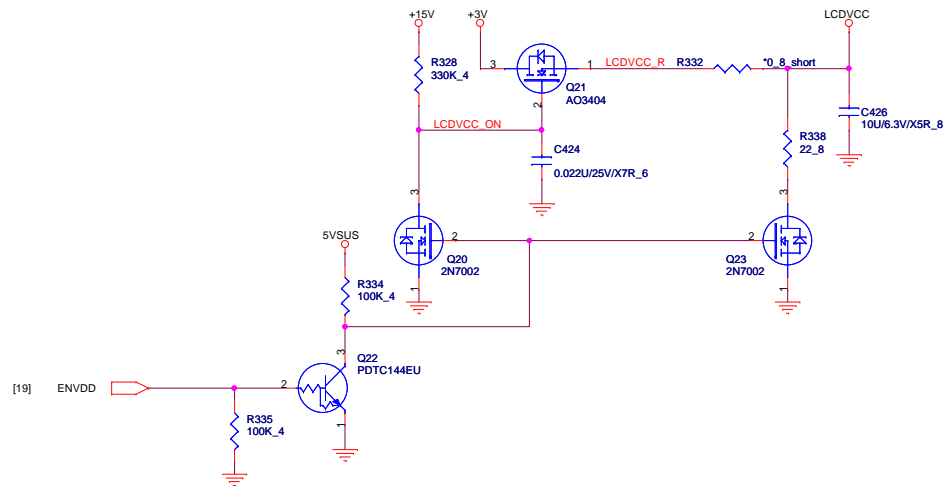


PROJECT : LL5A
Quanta Computer Inc.

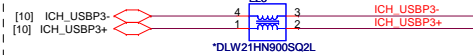
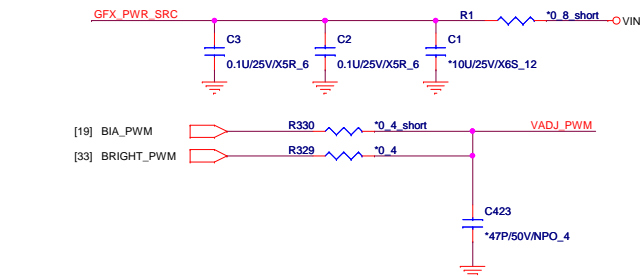
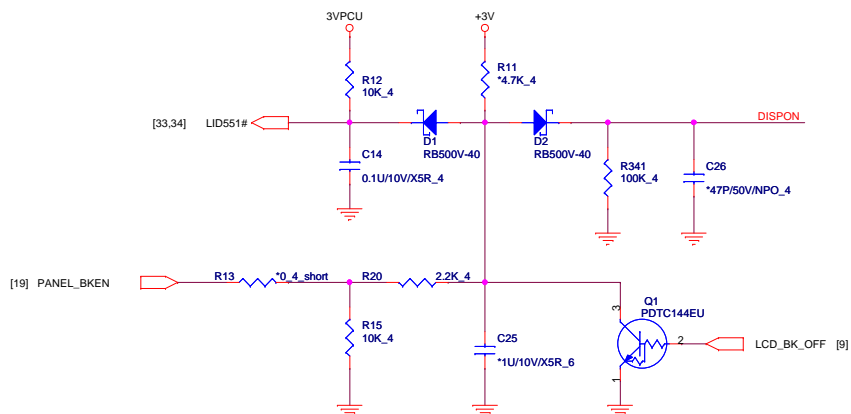
Size Custom	Document Number N10M (GND) 5/5	Rev 1B
Date: Tuesday, October 20, 2009	Sheet 20 of 43	



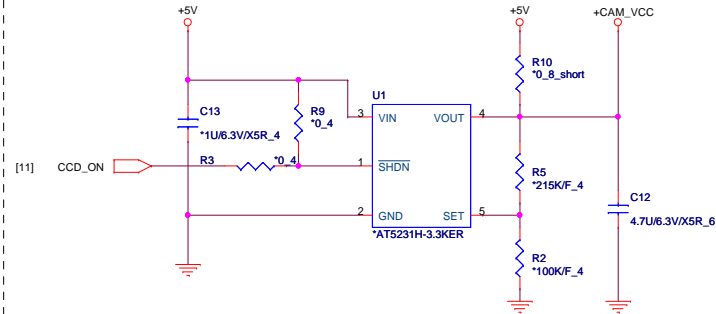
LCDVCC



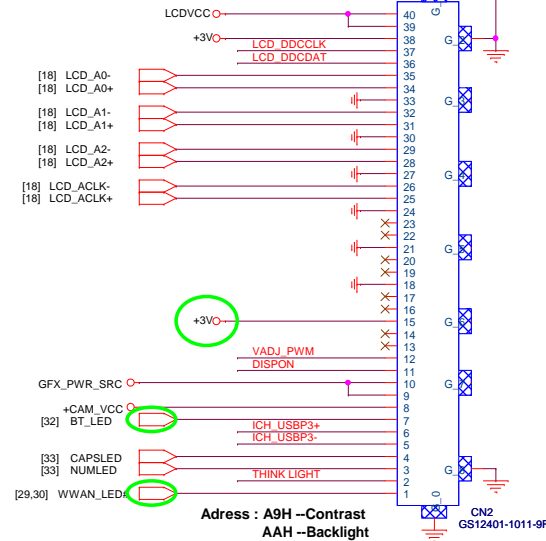
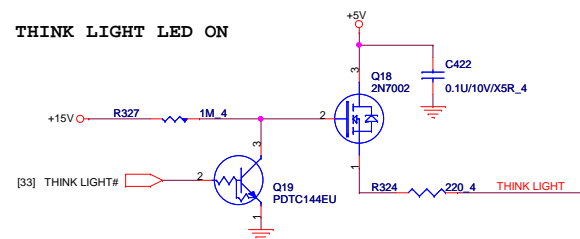
back light



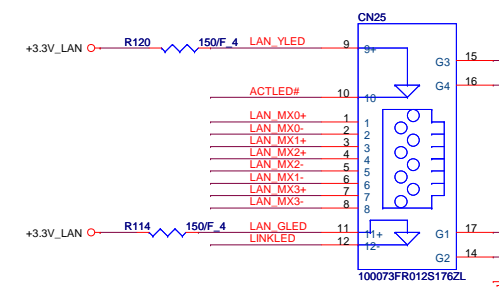
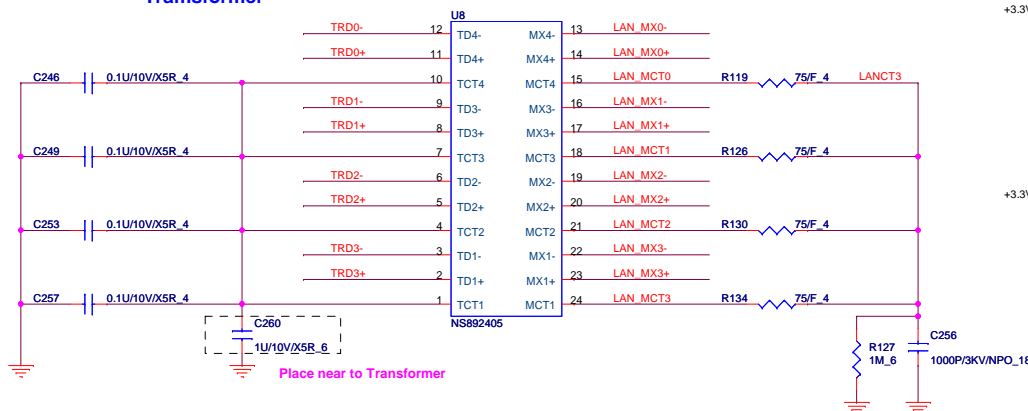
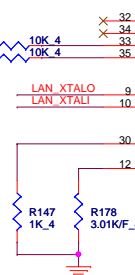
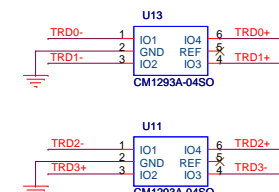
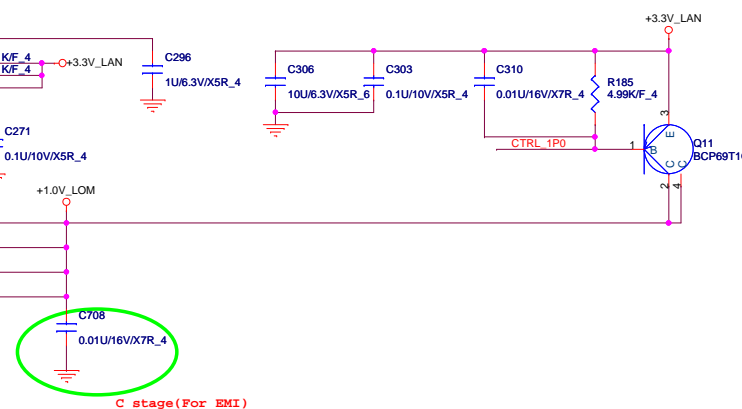
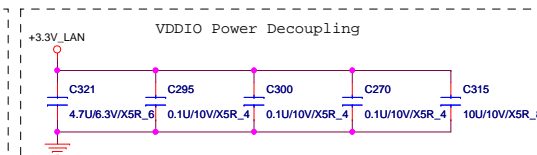
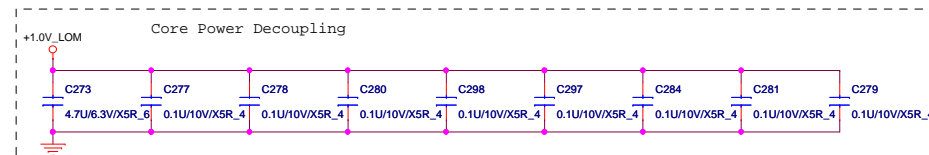
CAMERA VCC Control

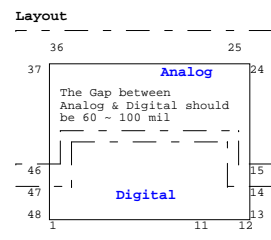


THINK LIGHT LED ON









Sense_A	Sense_B	RES
Port_A	Port_E	39.2K
Port_B	Port_F	20K

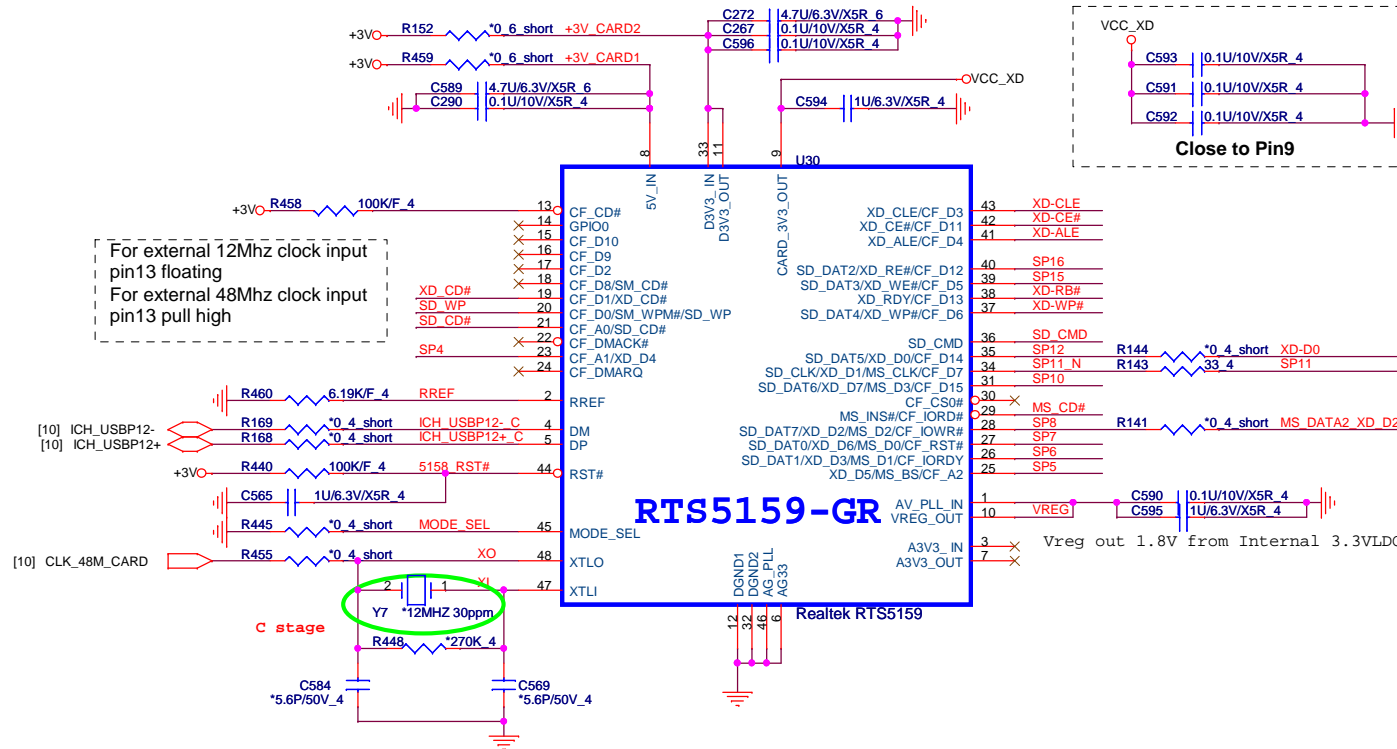
Stereo MIC

EXT_MIC_L, EXT_MIC_R, EXT_MIC_L_2, EXT_MIC_R_2, EXT_MIC_L_1, EXT_MIC_R_1, SENSE_MIC, MIC1-VREF, AGND, CN12, MIC_JACK, Normal Open

R207 10.6k short, R196 10.6k short, R197 4.7K_4, R208 4.7K_4, C340 1uF/10V/XSR_6, C316 100P/50V/NPO_4, C326 100P/50V/NPO_4

BLM188D601SN1D_0.2A, BLM188D601SN1D_0.2A

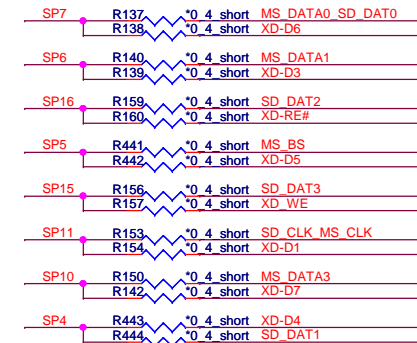
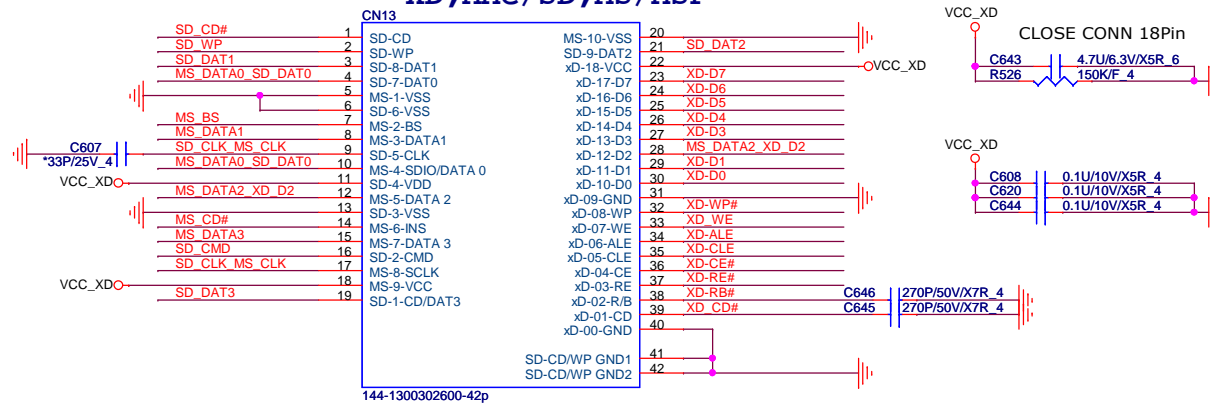
Layout Note:
Place close to
Audio Codec.



Note:

SD/MMC	MS	XD
SP0		XD_CD#
SP1	SD_WP	
SP2	SD_CD#	
SP3	SD_DAT1	XD_D4
SP4		XD_D5
SP5	MS_BS	XD_D3
SP6	MS_D1	XD_D6
SP7	SD_DAT0	MS_D0
SP8	SD_DAT7	MS_D2
SP9	MS_INS#	
SP10	SD_DAT6	MS_D3
SP11	SD_CLK	MS_SCLK
SP12	SD_DAT5	XD_D0
SP13	SD_DAT4	XD_WP#
SP14		XD_R/B#
SP15	SD_DAT3	XD_WE#
SP16	SD_DAT2	XD_RE#
SP17		XD_ALE
SP18		XD_CE#
SP19		XD_CLE

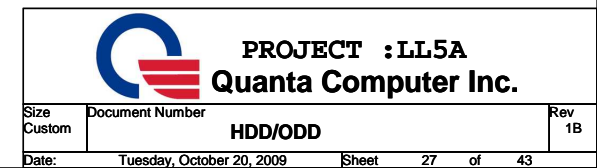
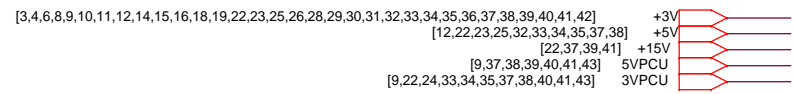
For RTS5159

5 IN1 CARD READER
XD, MMC/SD, MS/MSP

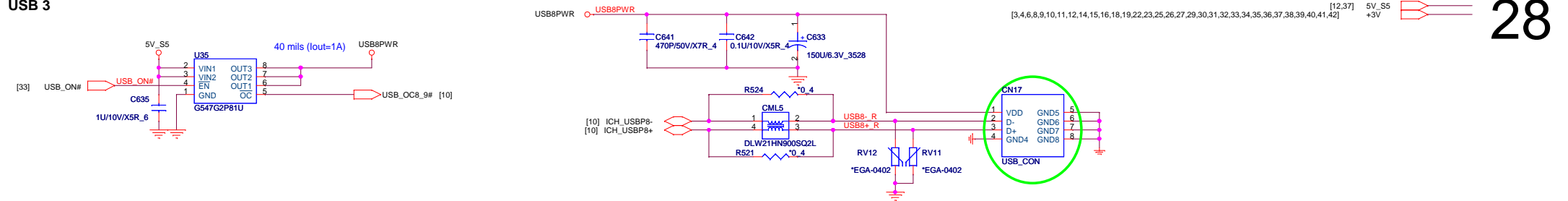
PROJECT : LL5A
Quanta Computer Inc.

Size	Document Number	Rev
B	Card Reader (RTS5159)	1B
Date:	Tuesday, October 20, 2009	Sheet 26 of 43

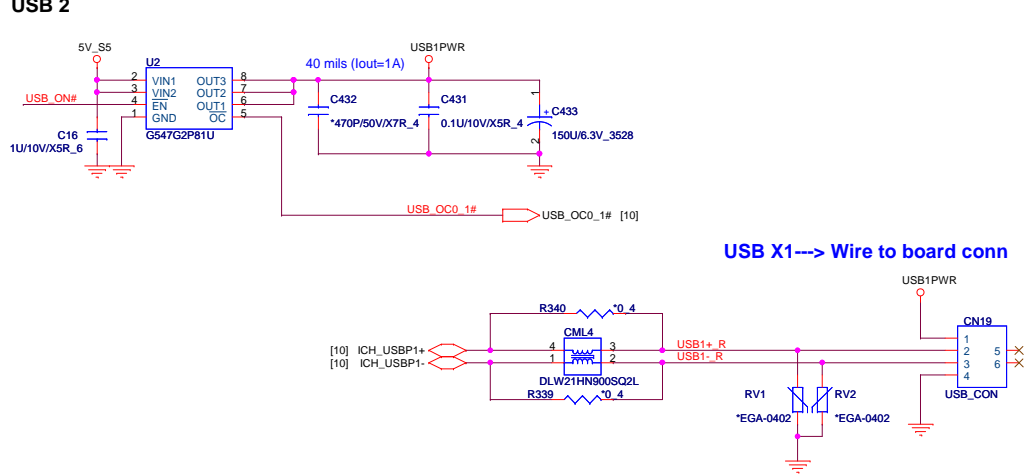
27



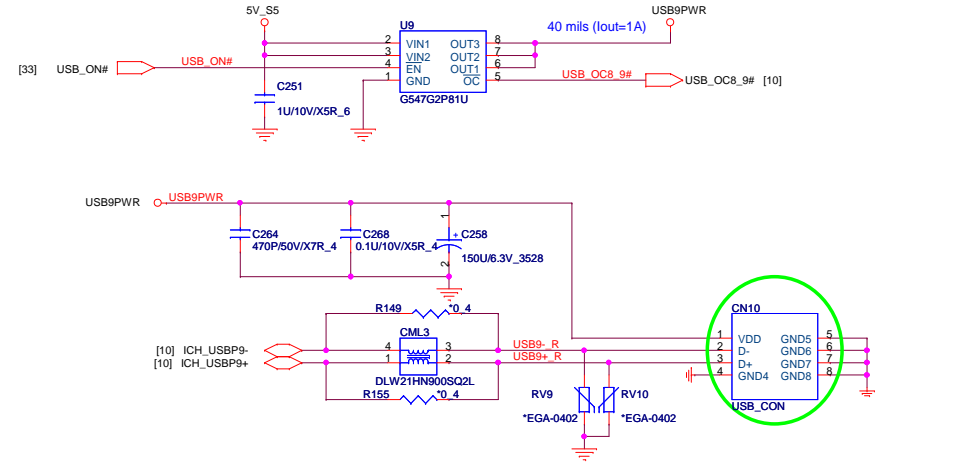
USB 3



USB 2

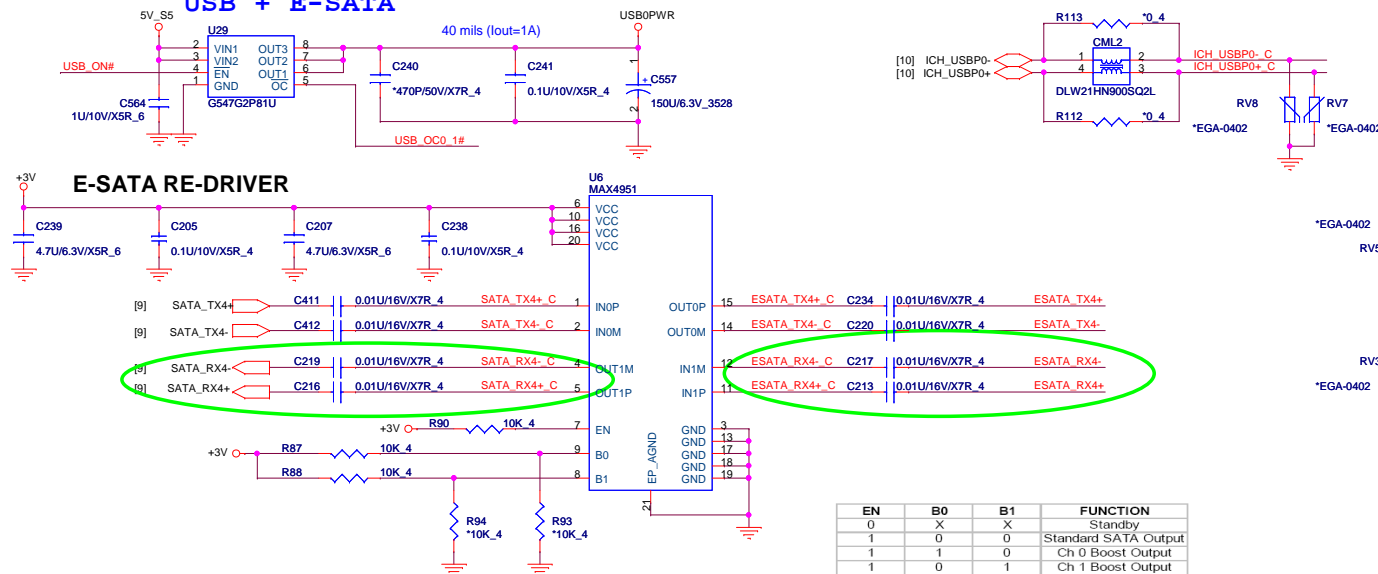


USB 4



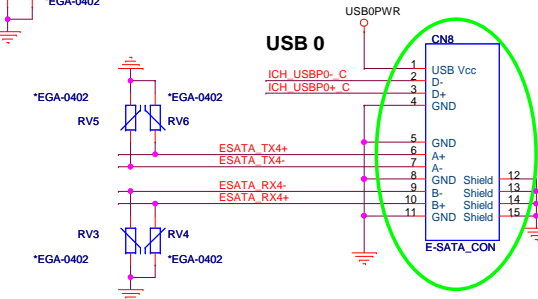
USB 1

USB + E-SATA

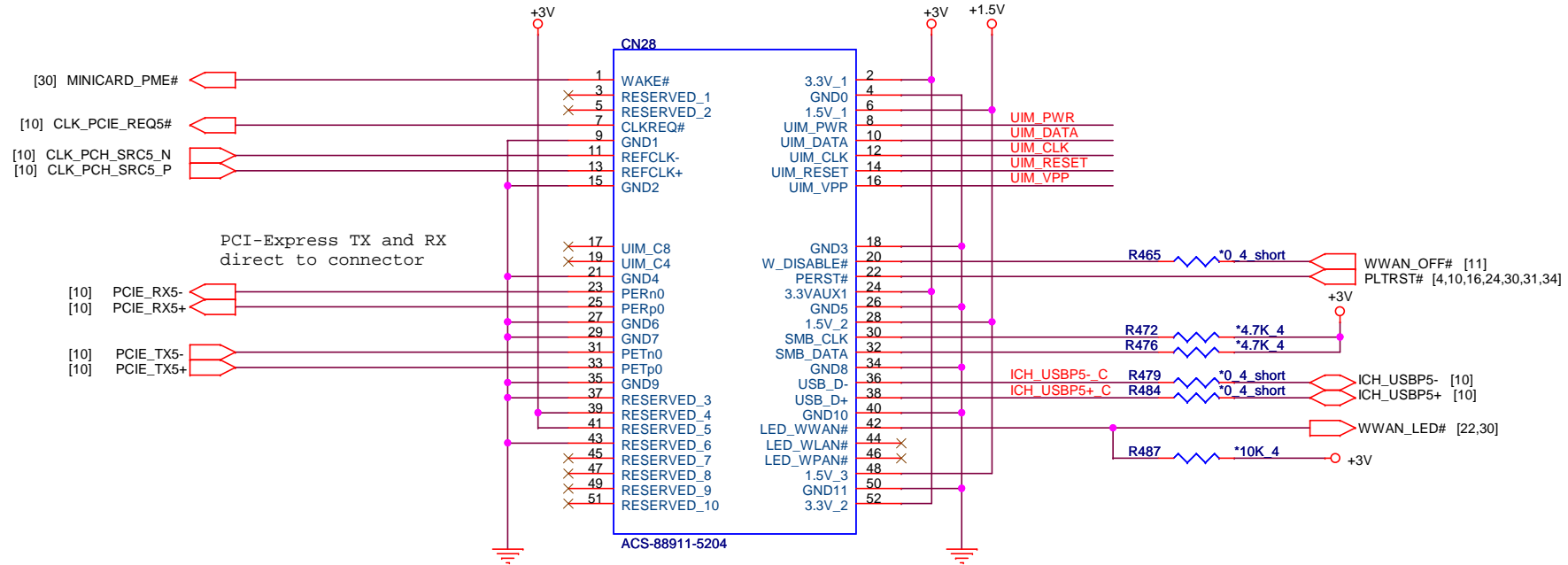


EN	B0	B1	FUNCTION
0	X	X	Standby
1	0	0	Standard SATA Output
1	1	0	Ch 0 Boost Output
1	0	1	Ch 1 Boost Output
1	1	1	Ch 0,1 Boost Output

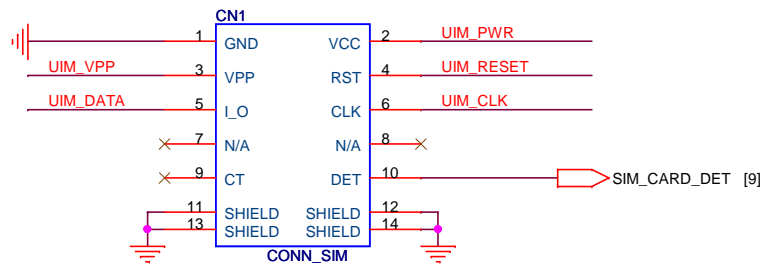
USB 0



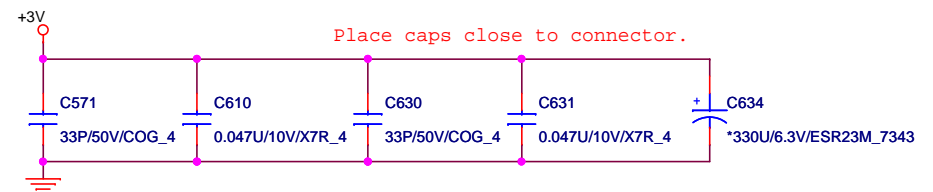
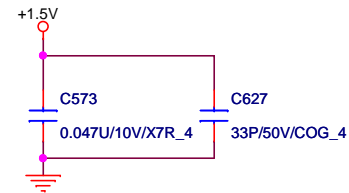
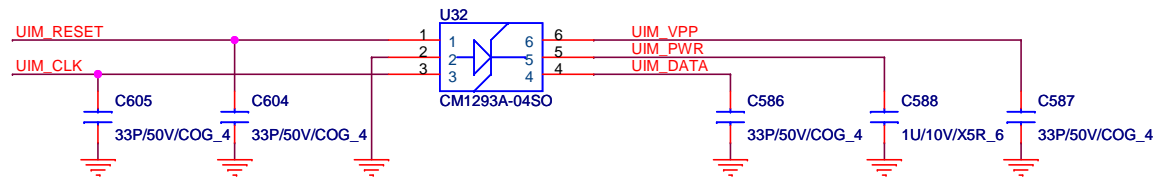
MiniCard WWAN connector



SIM Card CONN



Layout Note:
UIM_RESET, UIM_CLK, UIM_DATA routing as short as possible



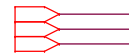
PROJECT : LL5A
Quanta Computer Inc.

Size Custom	Document Number	Rev 1B
MINI-Card (WWAN)		
Date: Tuesday, October 20, 2009	Sheet 29 of 43	

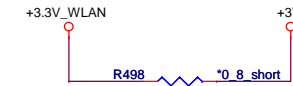
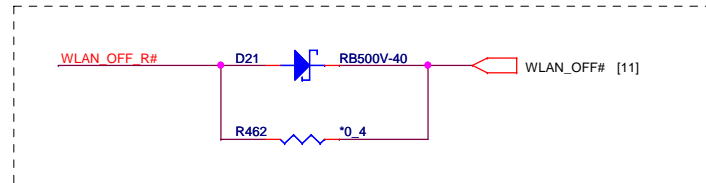
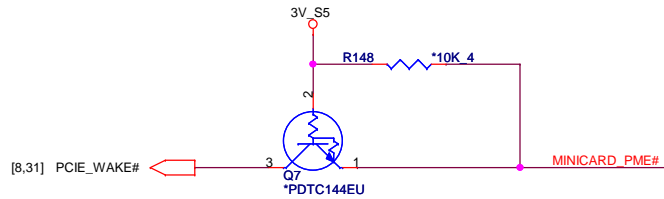
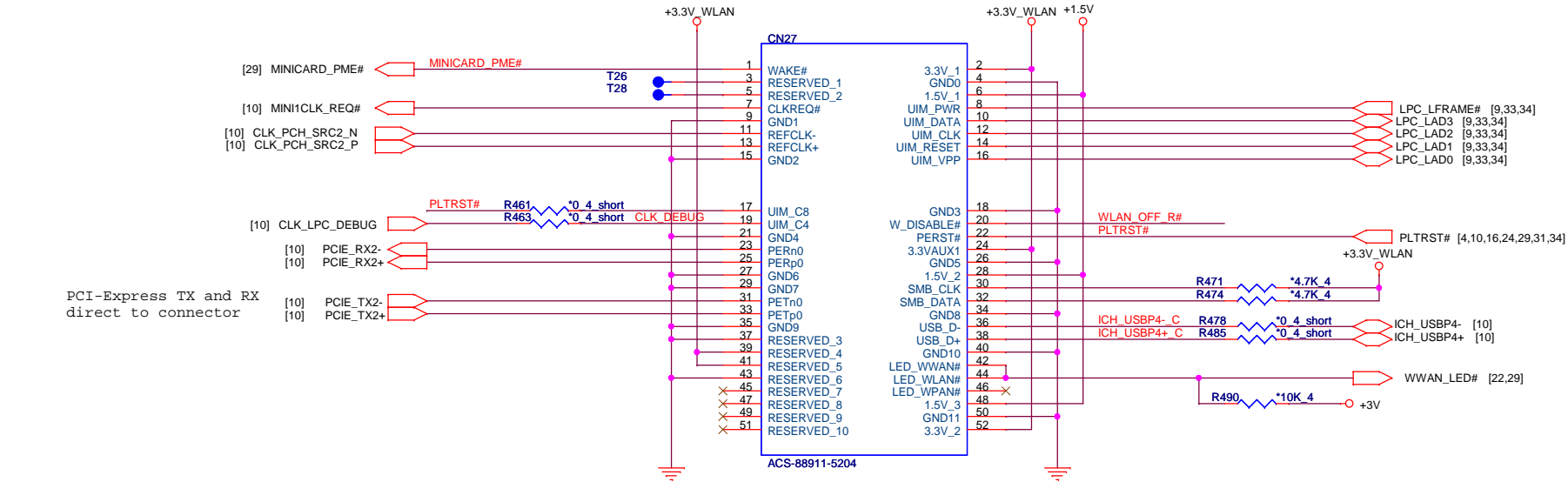
MiniCard WLAN/WiMAX connector

[3,4,6,8,9,10,11,12,14,15,16,18,19,22,23,25,26,27,28,29,31,32,33,34,35,36,37,38,39,40,41,42]
[3,17,21,29,31,39]
[4,8,9,10,11,12,24,37]

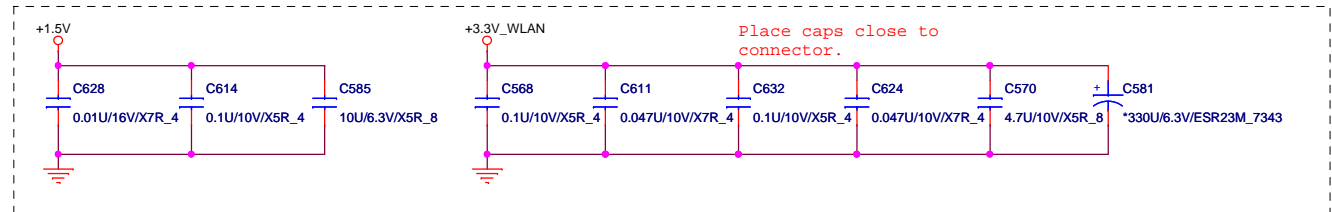
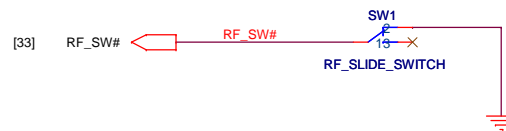
+3V
+1.5V
3V_S5



30



RF ON/OFF SWITCH



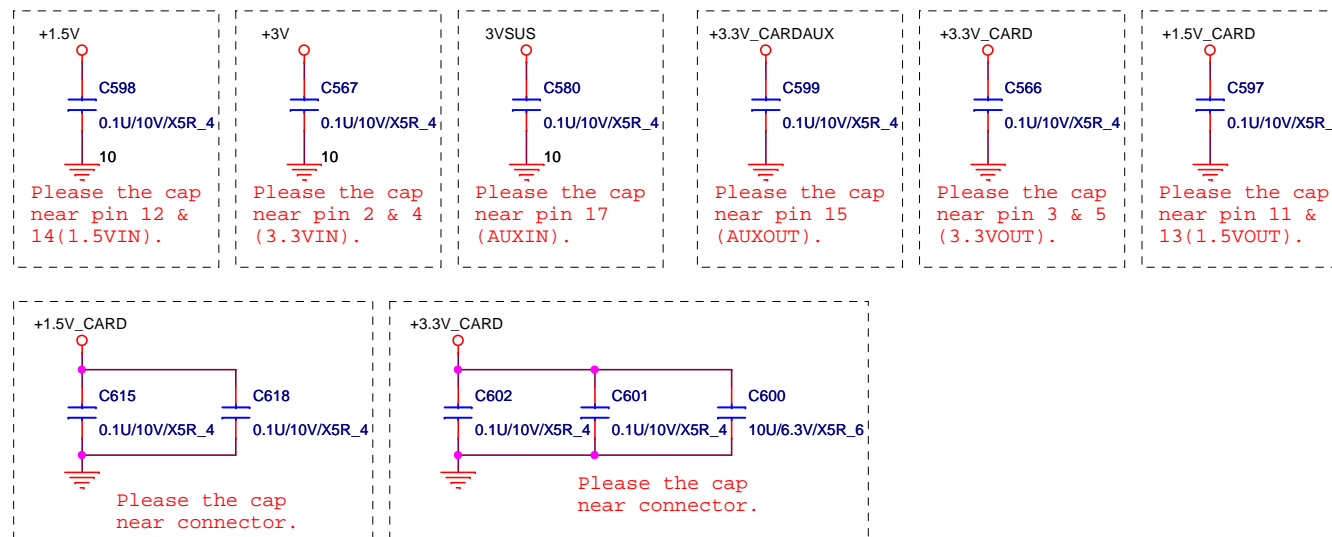
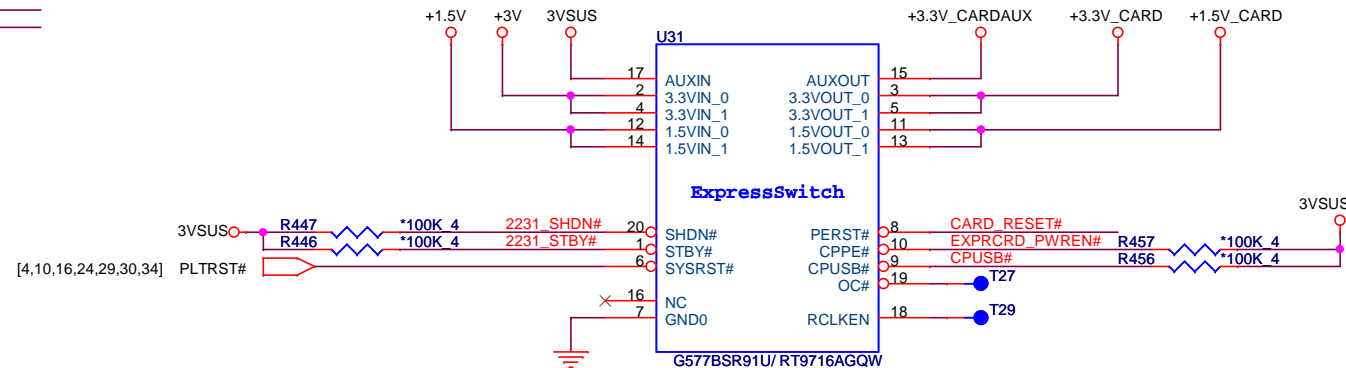
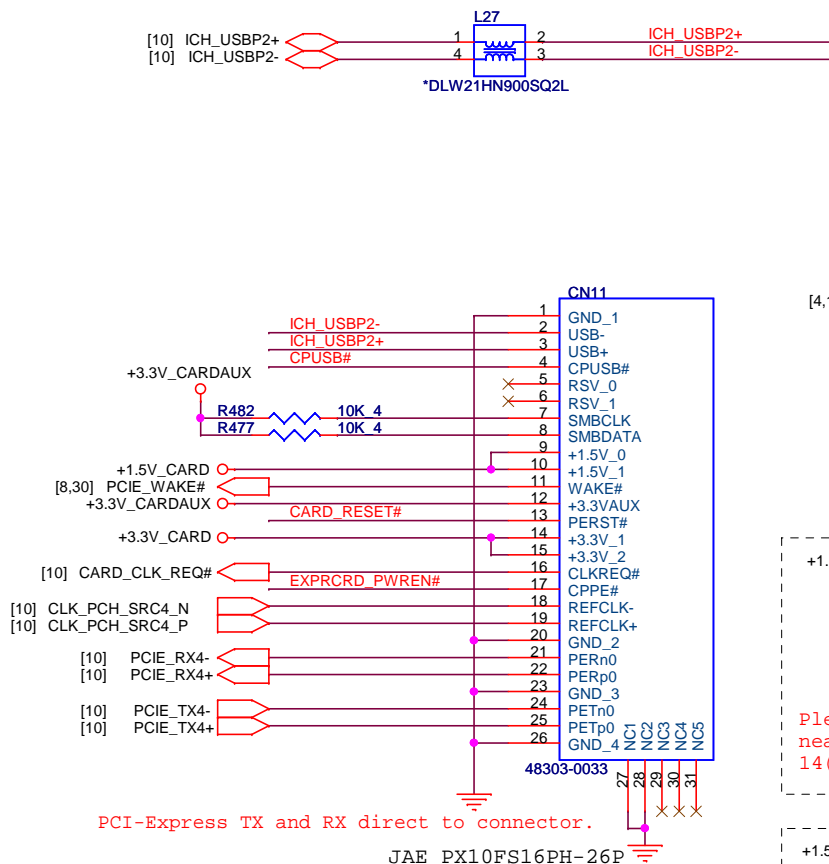
PROJECT :LL5A
Quanta Computer Inc.

Express Card

[3,4,6,8,9,10,11,12,14,15,16,18,19,22,23,25,26,27,28,29,30,32,33,34,35,36,37,38,39,40,41,42]
 [3,17,21,29,30,39] +3V
 [33,37,43] +1.5V
 3VSUS

31

+1.5V_CARD Max. 650mA, Average 500mA.
 +3.3V_CARD Max. 1300mA, Average 1000mA.

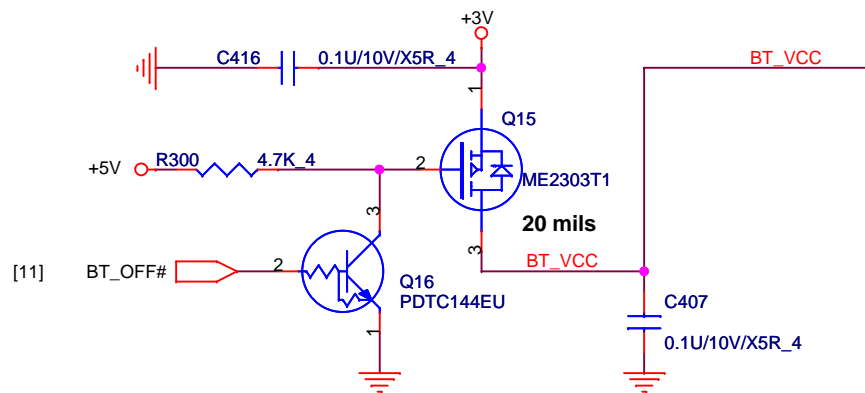
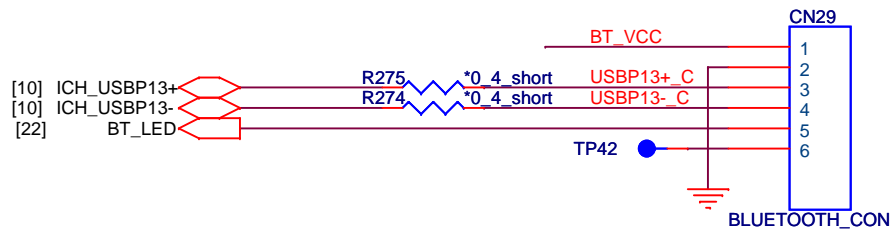


PROJECT : LL5A
 Quanta Computer Inc.

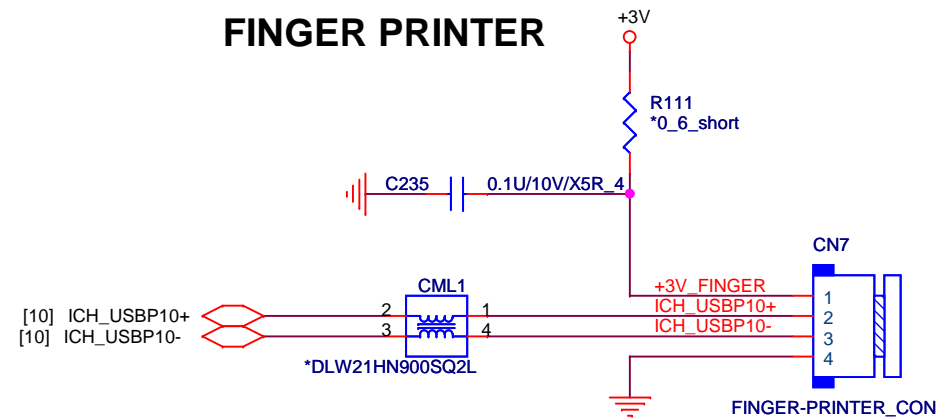
Size Custom	Document Number	Express Card	Rev 1B
Date:	Tuesday, October 20, 2009	Sheet 31 of 43	



BLUETOOTH



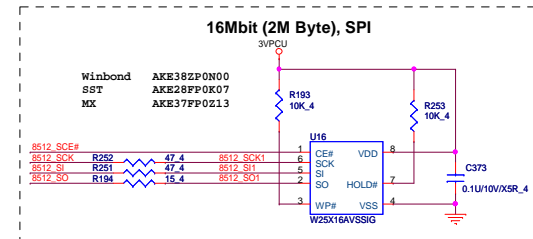
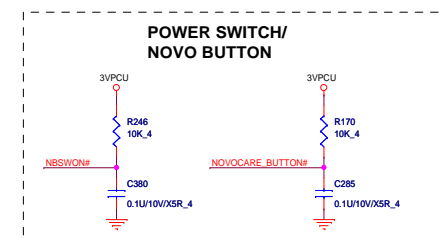
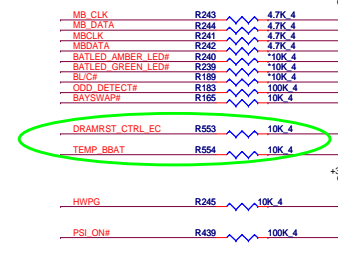
FINGER PRINTER



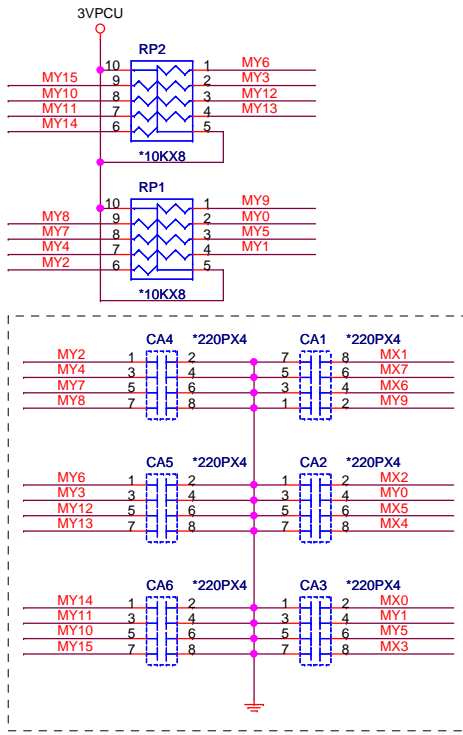
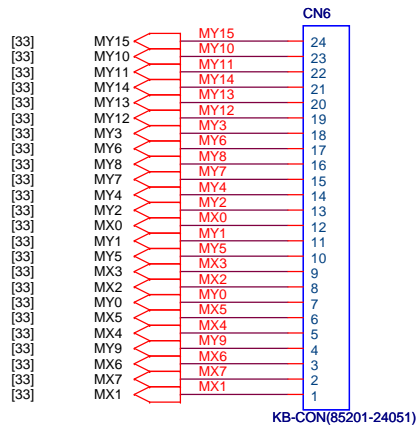
PROJECT :LL5A
 Quanta Computer Inc.

Size Custom	Document Number	Rev 1B
Date:	Tuesday, October 20, 2009	Sheet 32 of 43

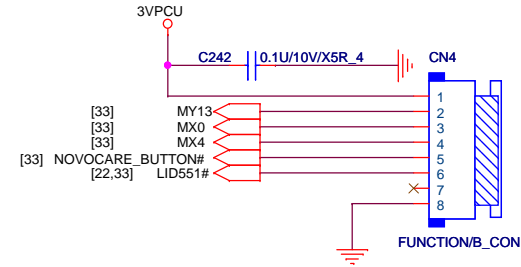
BT/FP



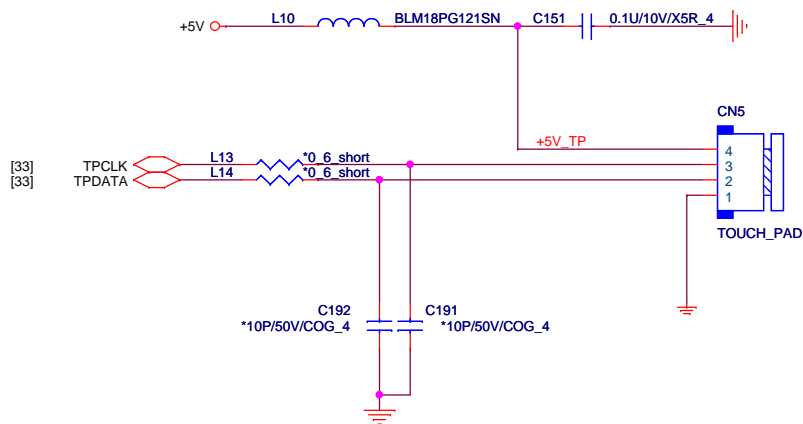
KEYBOARD



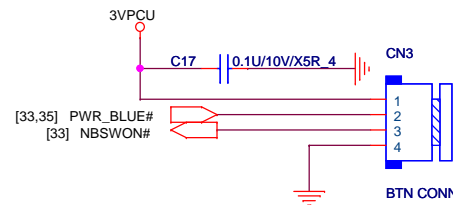
FUNCTION BUTTON BOARD



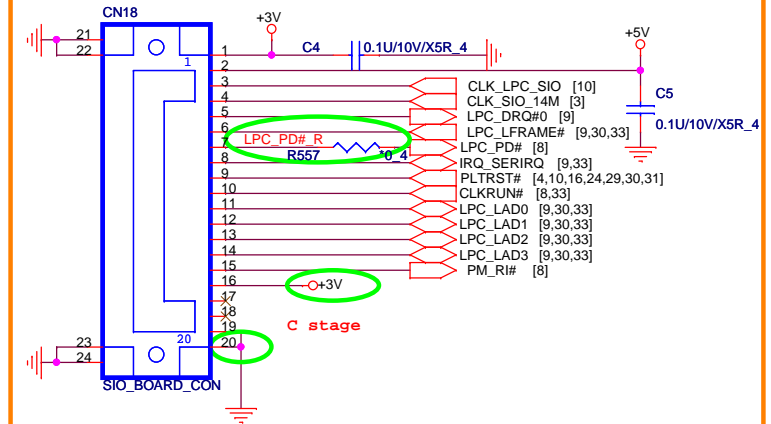
TOUCH PAD



POWER BUTTON BOARD



SIO BOARD



PROJECT :LL5A
Quanta Computer Inc.

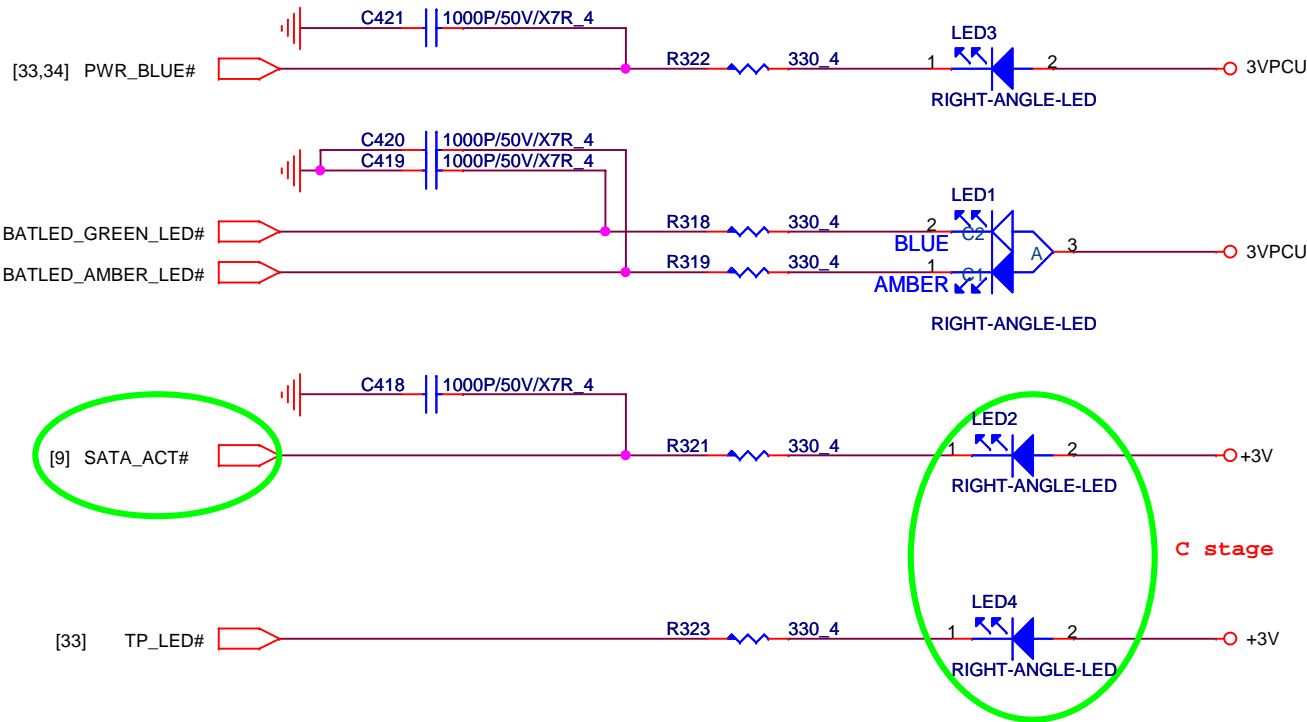
Size Custom	Document Number KB/TP/PW-B/FN-B	Rev 1B
Date: Tuesday, October 20, 2009	Sheet 34	of 43

LED

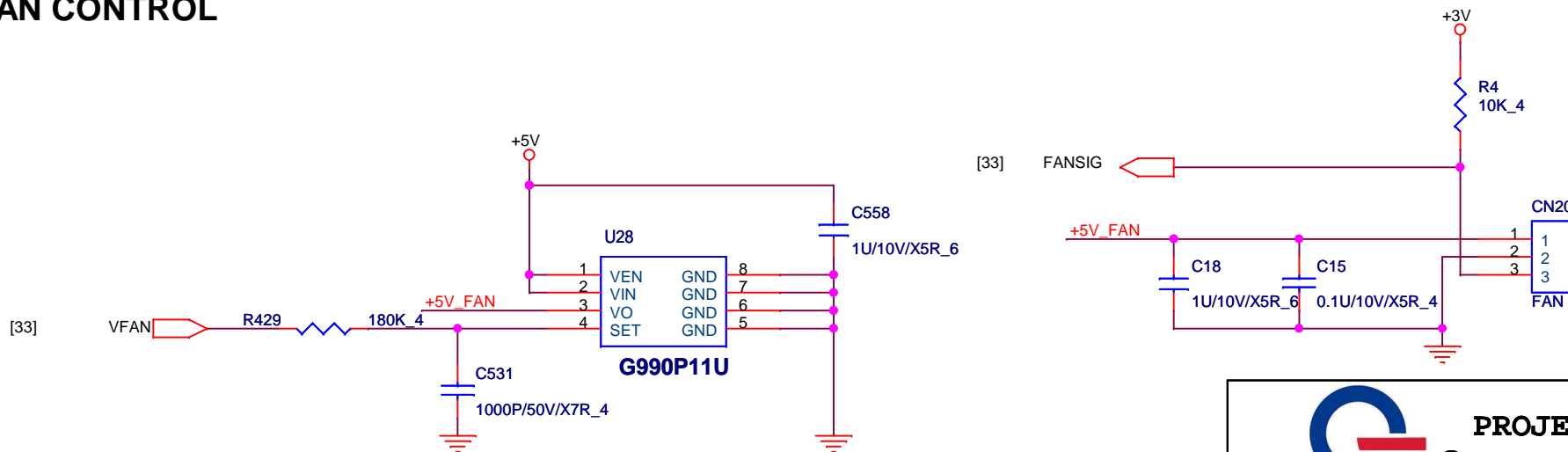
[3,4,6,8,9,10,11,12,14,15,16,18,19,22,23,25,26,27,28,29,30,31,32,33,34,36,37,38,39,40,41,42] +3V
[12,22,23,25,27,32,33,34,37,38] +5V



35



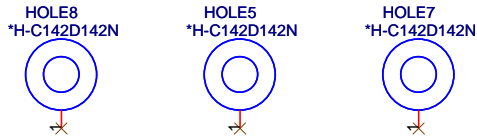
FAN CONTROL



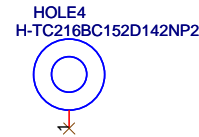
PROJECT :LL5A
Quanta Computer Inc.

Size Custom	Document Number LED/FAN	Rev 1B
Date: Tuesday, October 20, 2009	Sheet 35	of 43

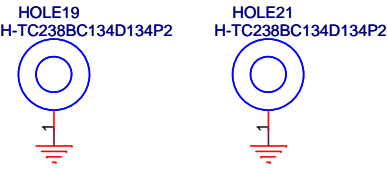
Hole for CPU support



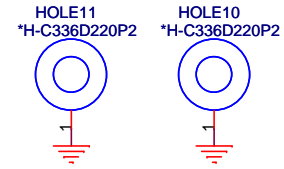
Hole for CPU Nut



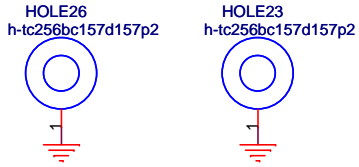
VGA nut



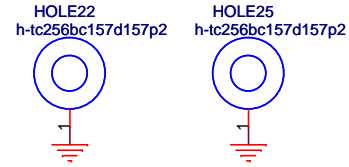
Drink Hole



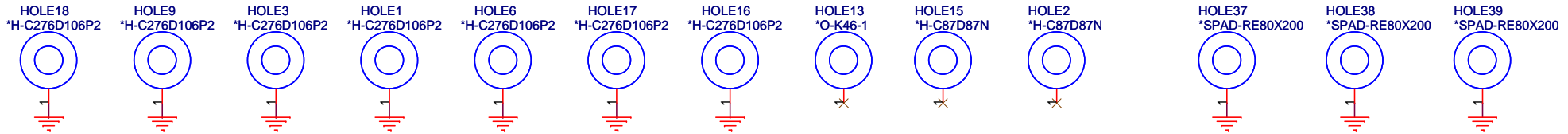
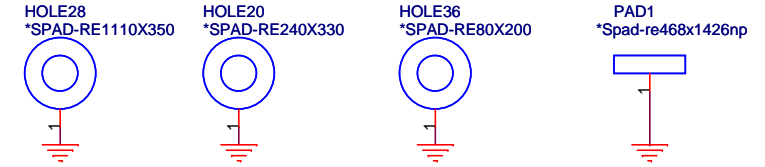
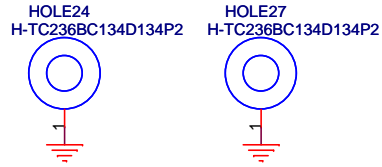
MINI CARD nut (WLAN)



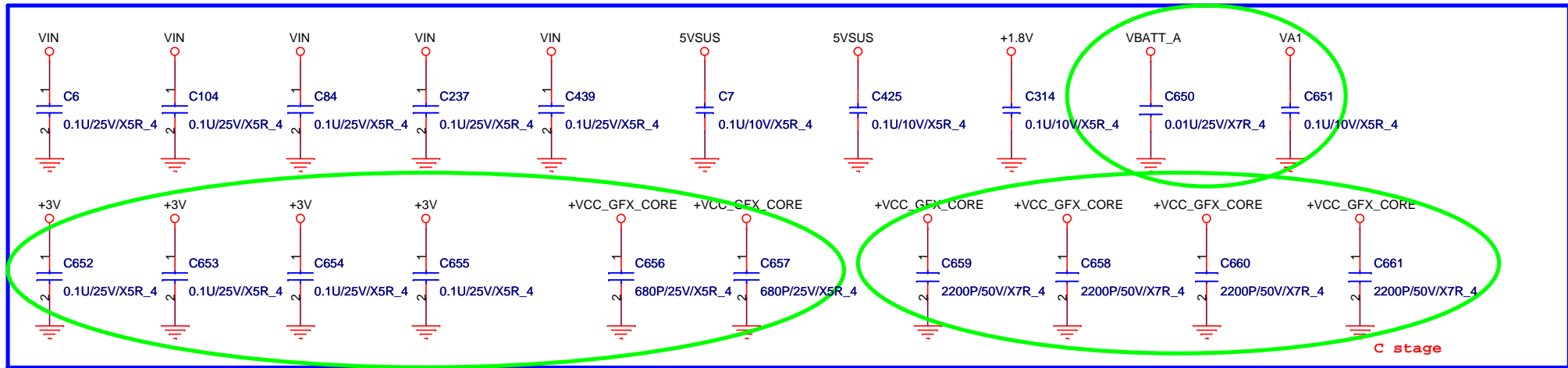
MINI CARD nut (WWAN)



Hole for PCH Thermal



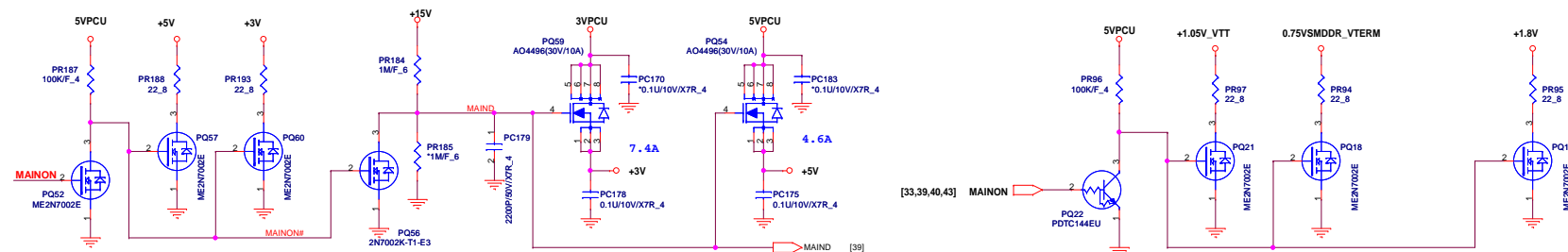
EMI Reserved



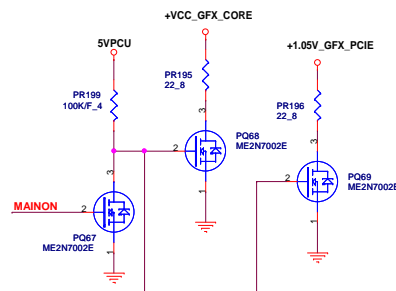
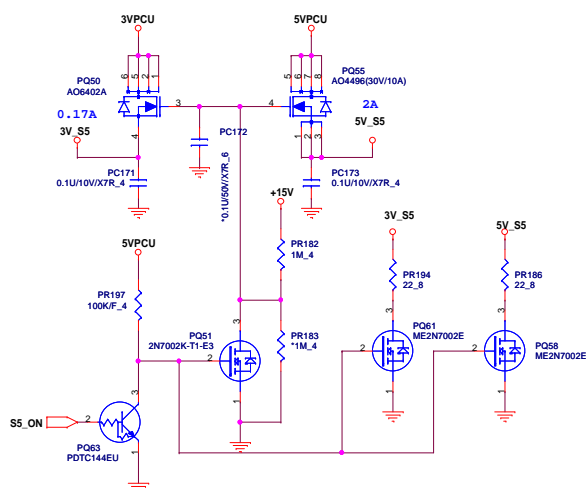
PROJECT : LL5A
Quanta Computer Inc.

Size Custom	Document Number HOLD & SKEW	Rev 1B
Date:	Wednesday, October 21, 2009	Sheet 36 of 43

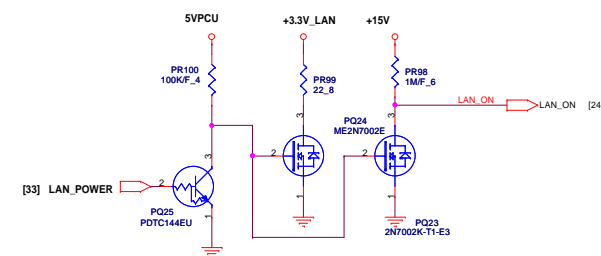
+3V, +5V



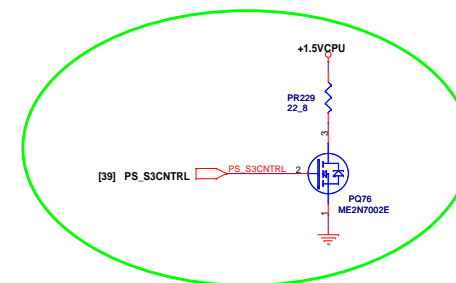
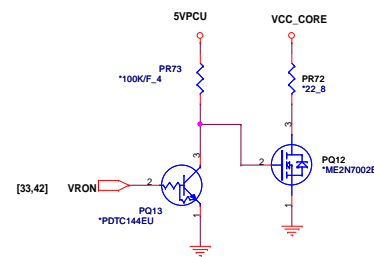
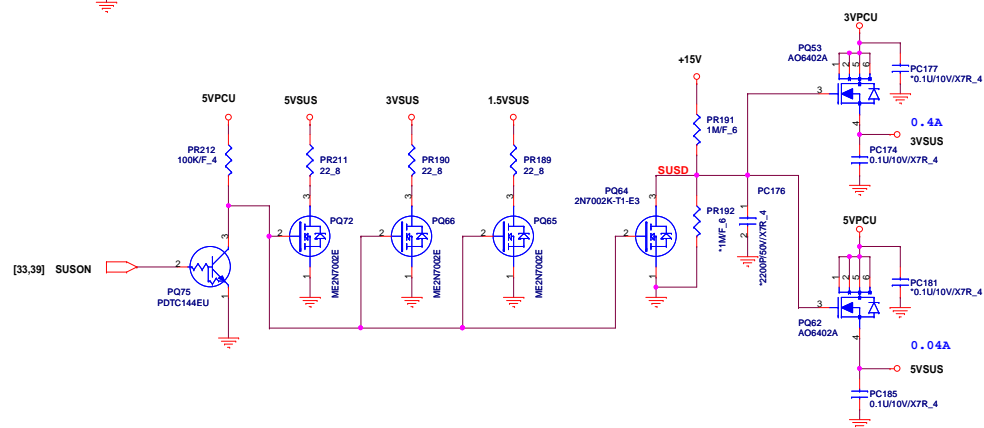
3V_S5, 5V_S5

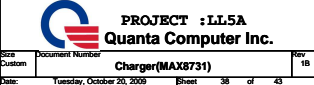


LANVCC

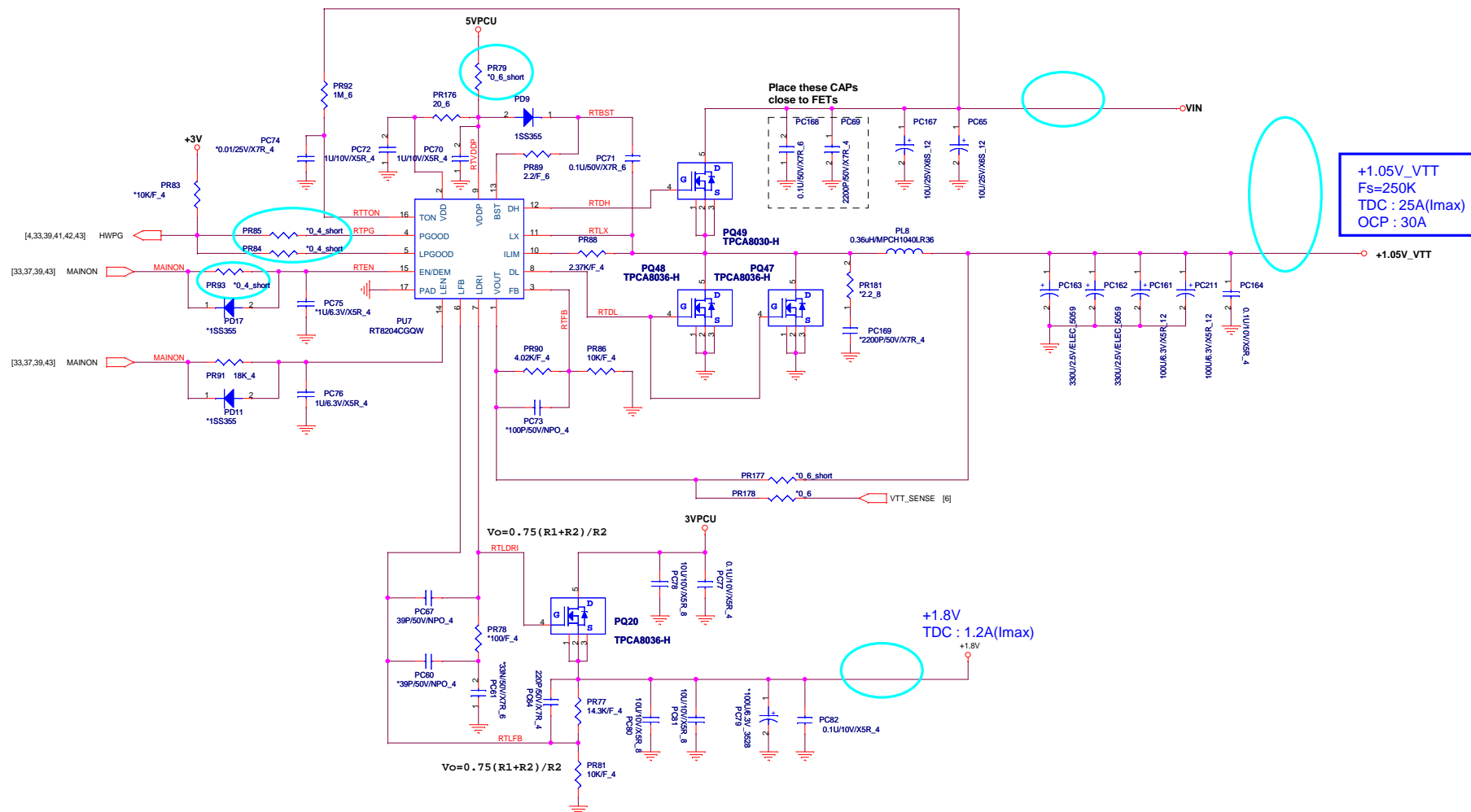


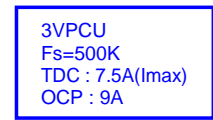
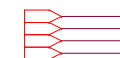
3VSUS, 5VSUS

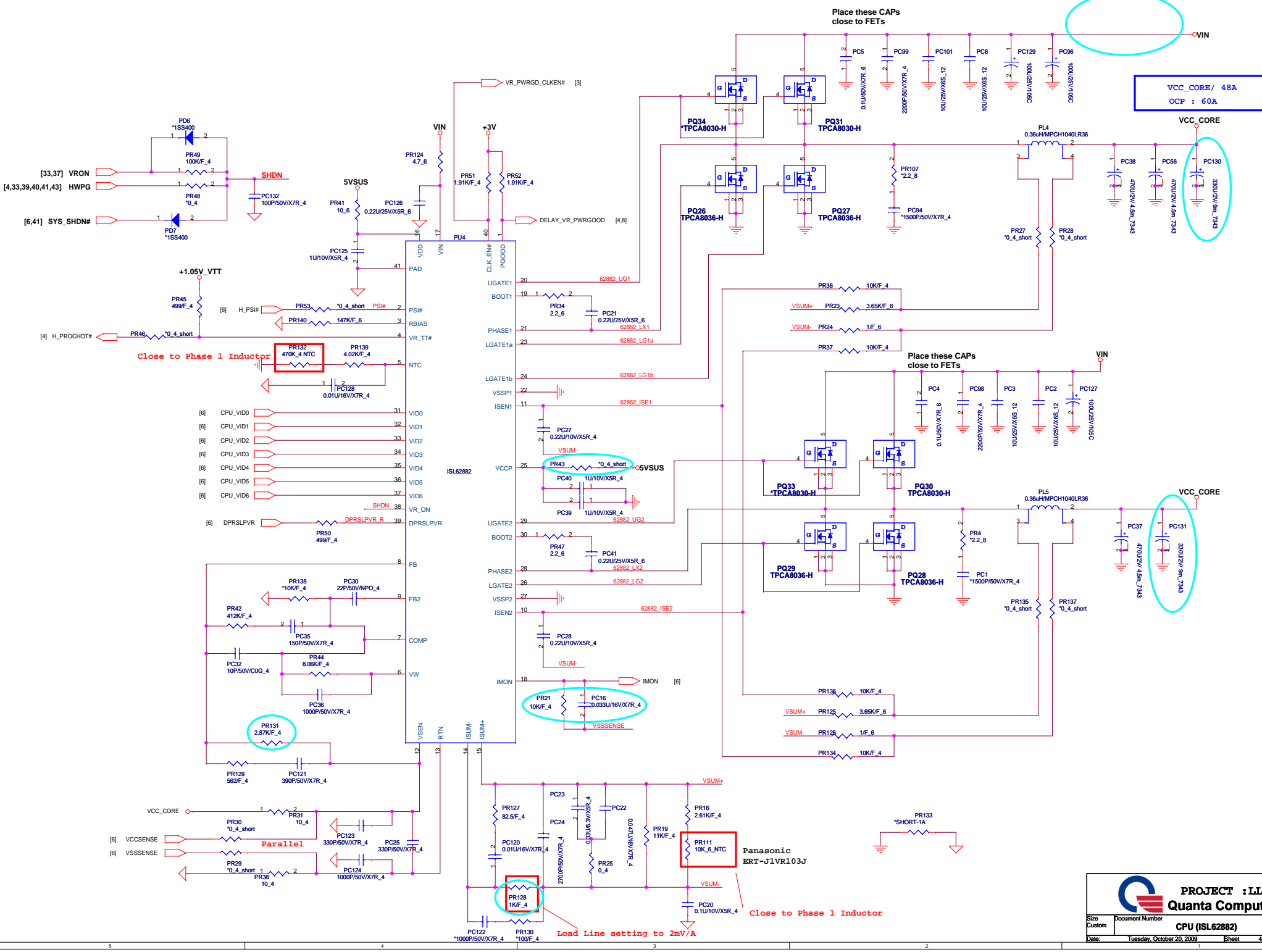












For Descrete N10M VGA Only

