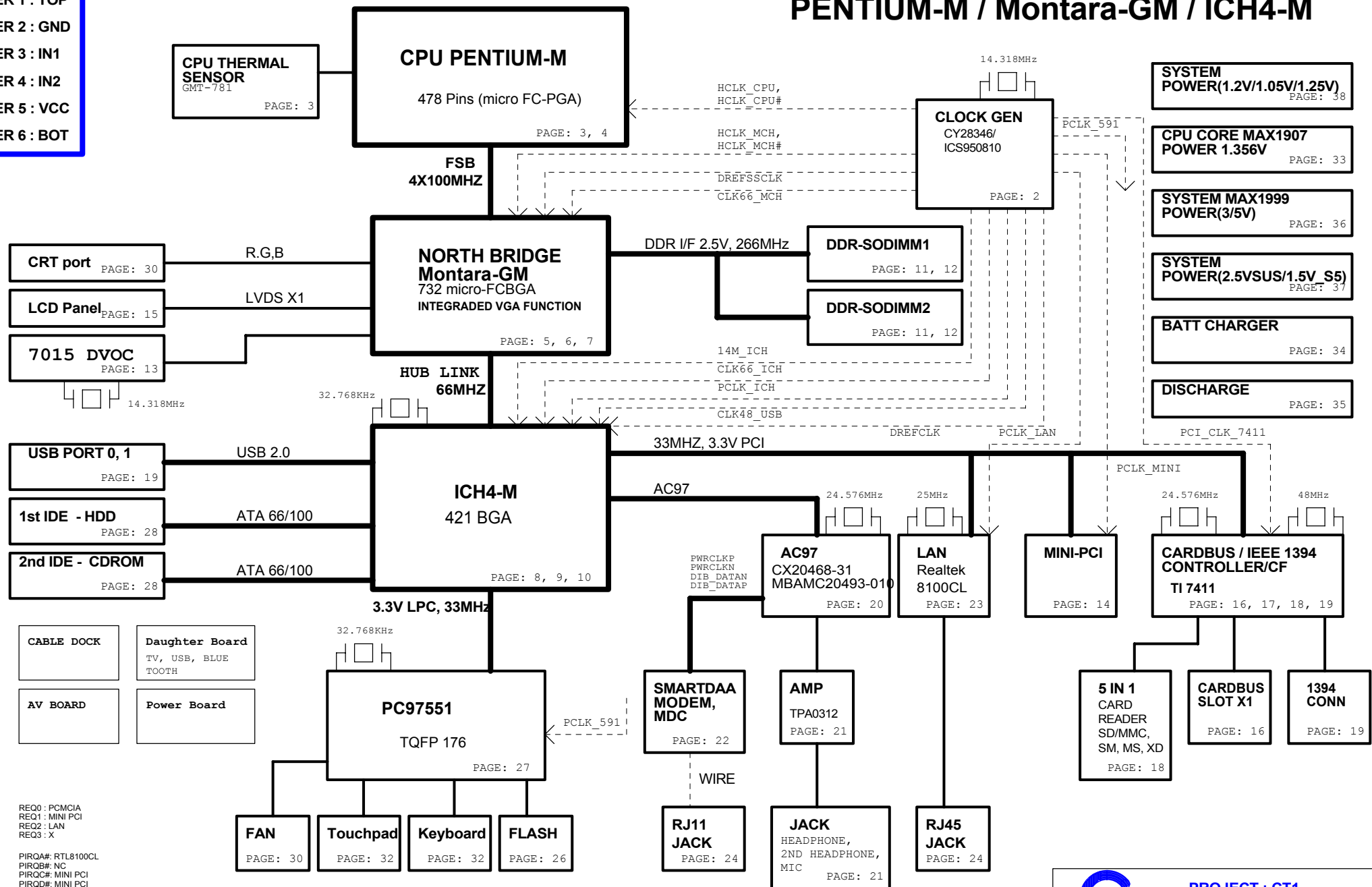


PCB STACK UP

LAYER 1 : TOP
LAYER 2 : GND
LAYER 3 : IN1
LAYER 4 : IN2
LAYER 5 : VCC
LAYER 6 : BOT

CT1 BLOCK DIAGRAM

PENTIUM-M / Montara-GM / ICH4-M



REQ0 : PCMCIA
REQ1 : MINI PCI
REQ2 : LAN
REQ3 : X

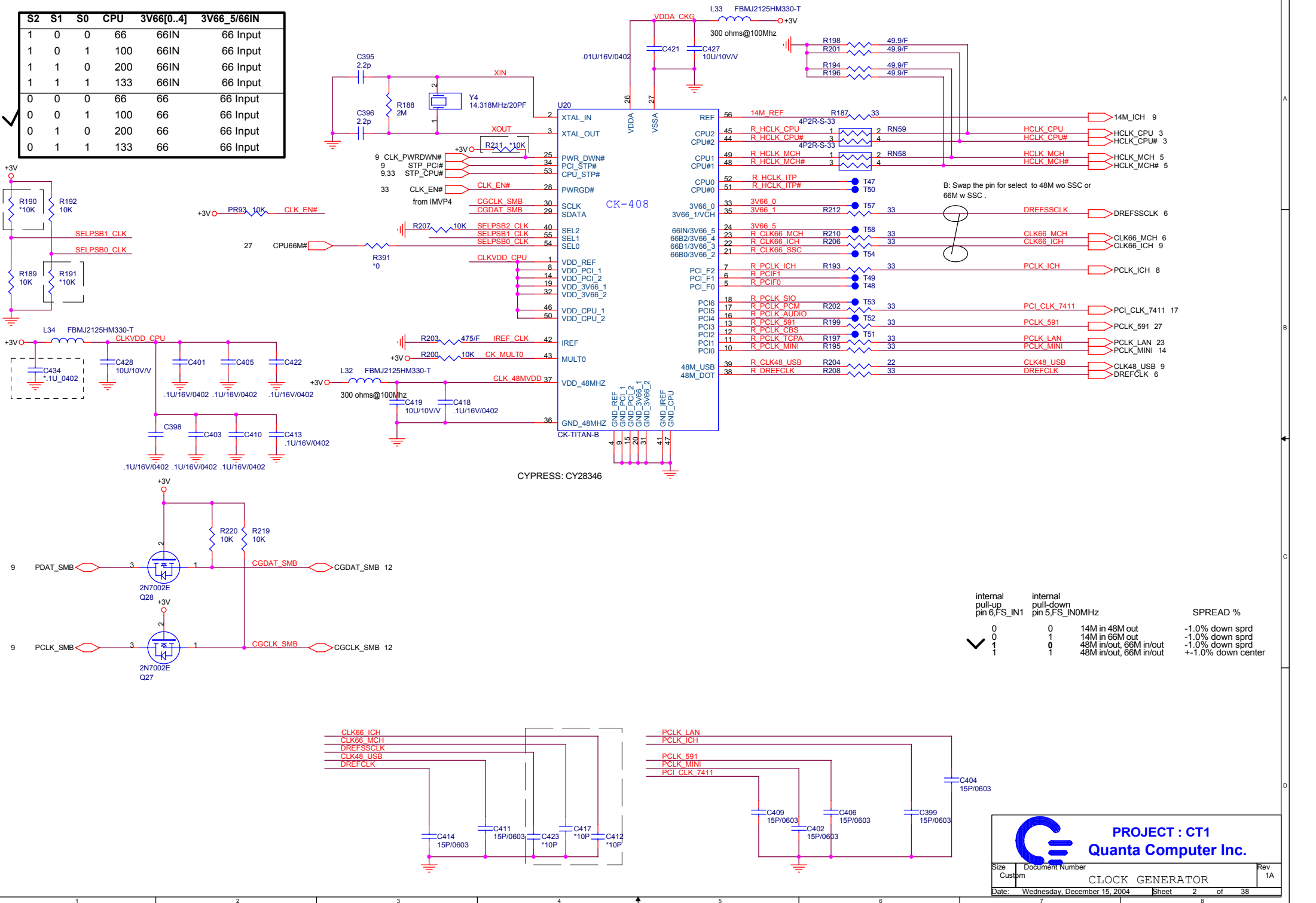
PIRQA# : RTL8100CL
PIRQB# : NC
PIROC# : MINI PCI
PIROD# : MINI PCI
PIROE# : 7411
PIROF# : 7411
PIROG# : 7411
PIROH# : Internal USB

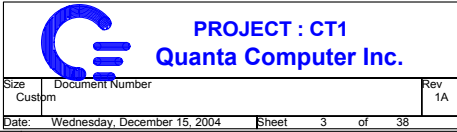


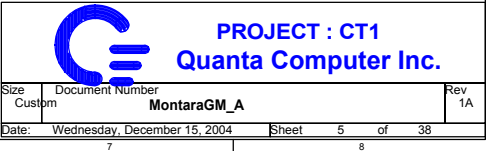
PROJECT : CT1
Quanta Computer Inc.

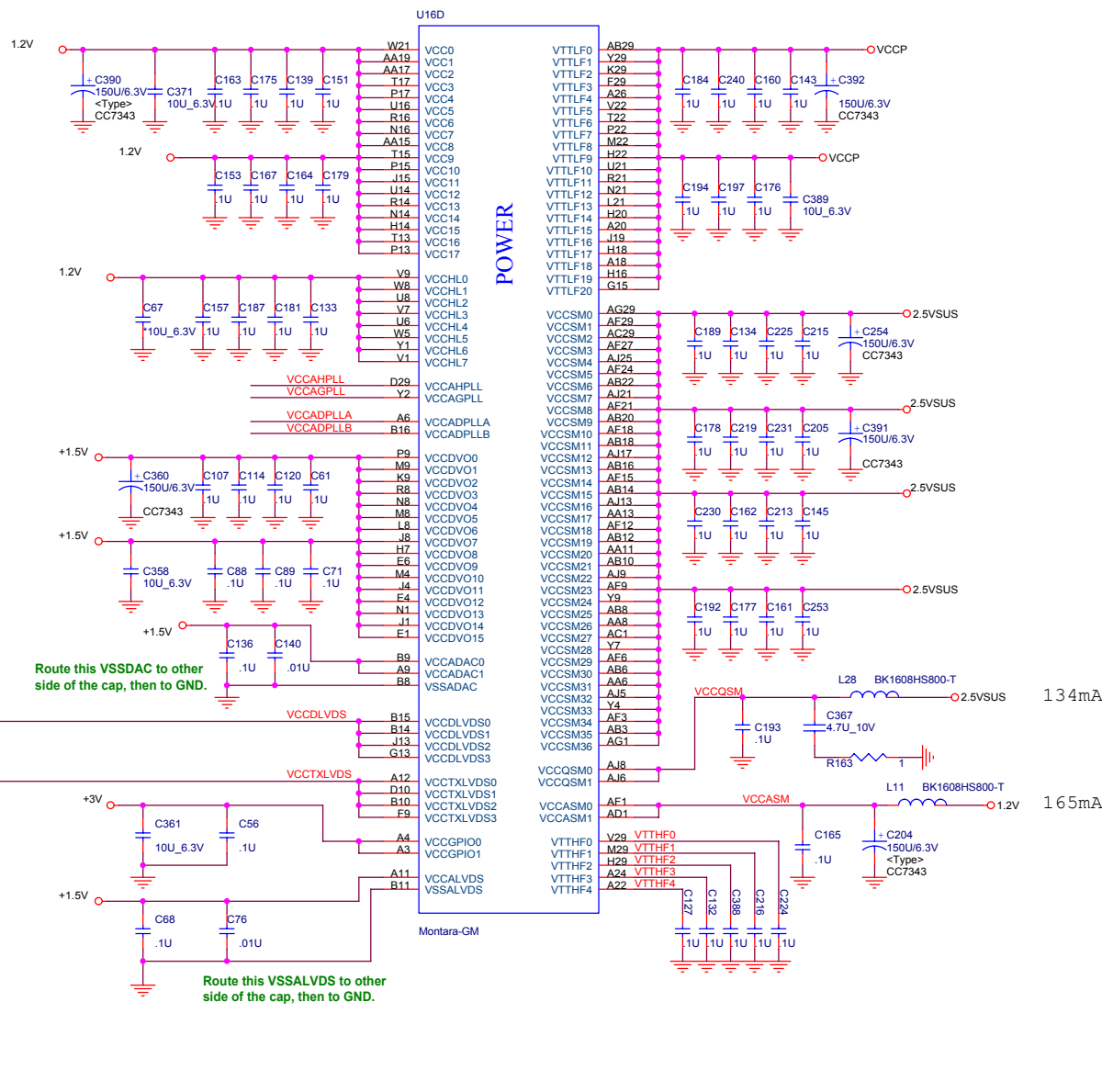
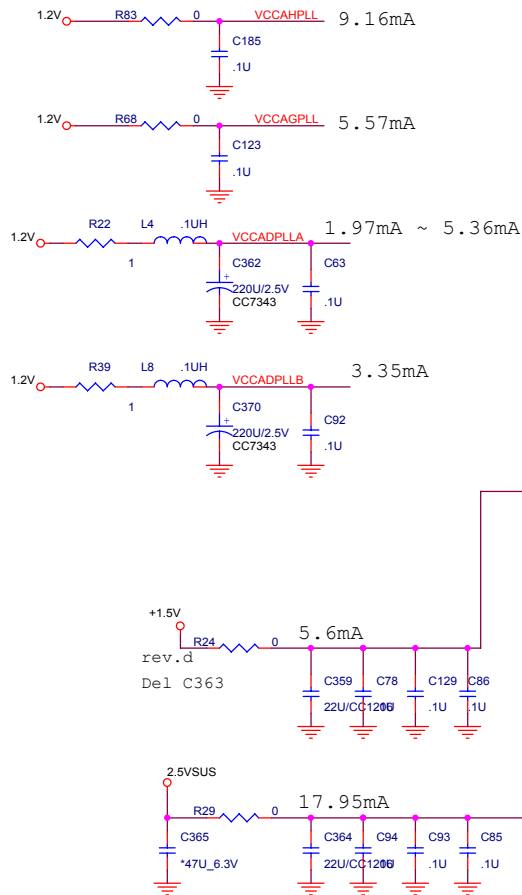
CLK GEN

S2	S1	S0	CPU	3V66[0..4]	3V66_5/66IN
1	0	0	66	66IN	66 Input
1	0	1	100	66IN	66 Input
1	1	0	200	66IN	66 Input
1	1	1	133	66IN	66 Input
0	0	0	66	66	66 Input
0	0	1	100	66	66 Input
0	1	0	200	66	66 Input
0	1	1	133	66	66 Input





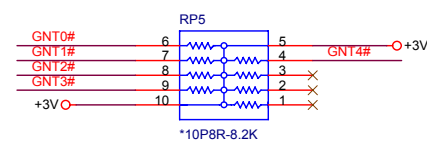




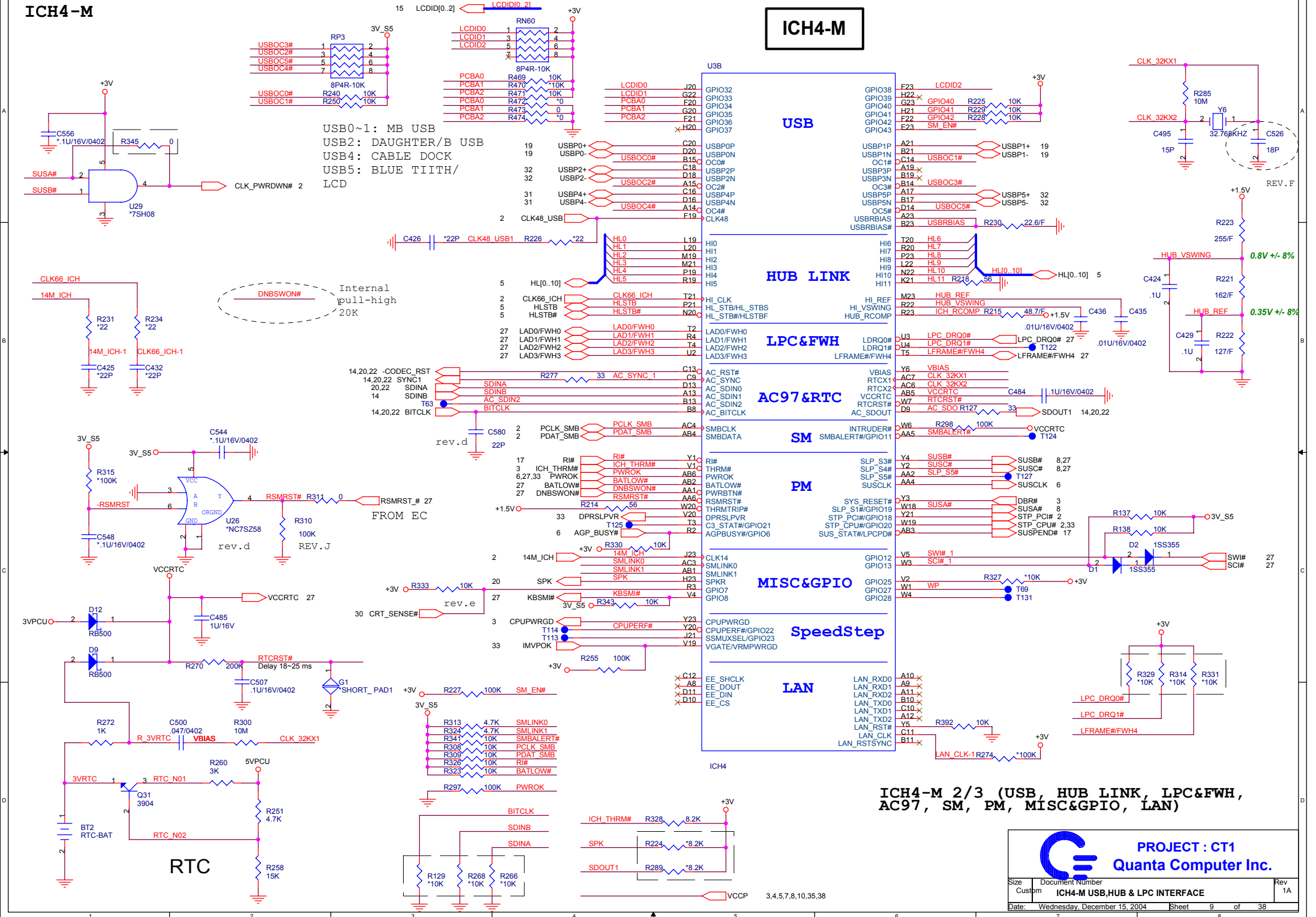
change +2.5v to 2.5vsus

MONTARA-GME/ 855GM+ 3 of 3 (POWER & CAP.)

PCI Bus pull high resistor



ICH4-M



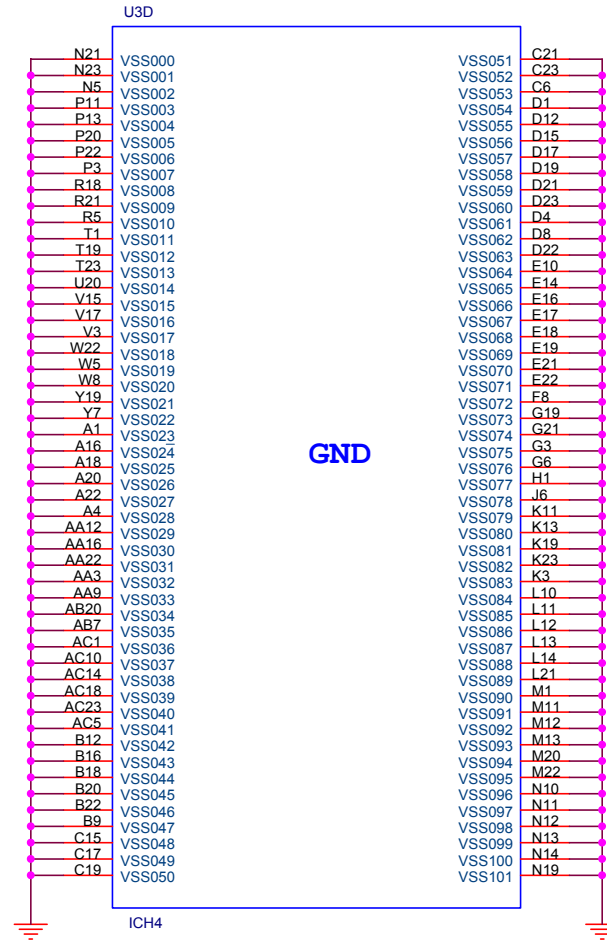
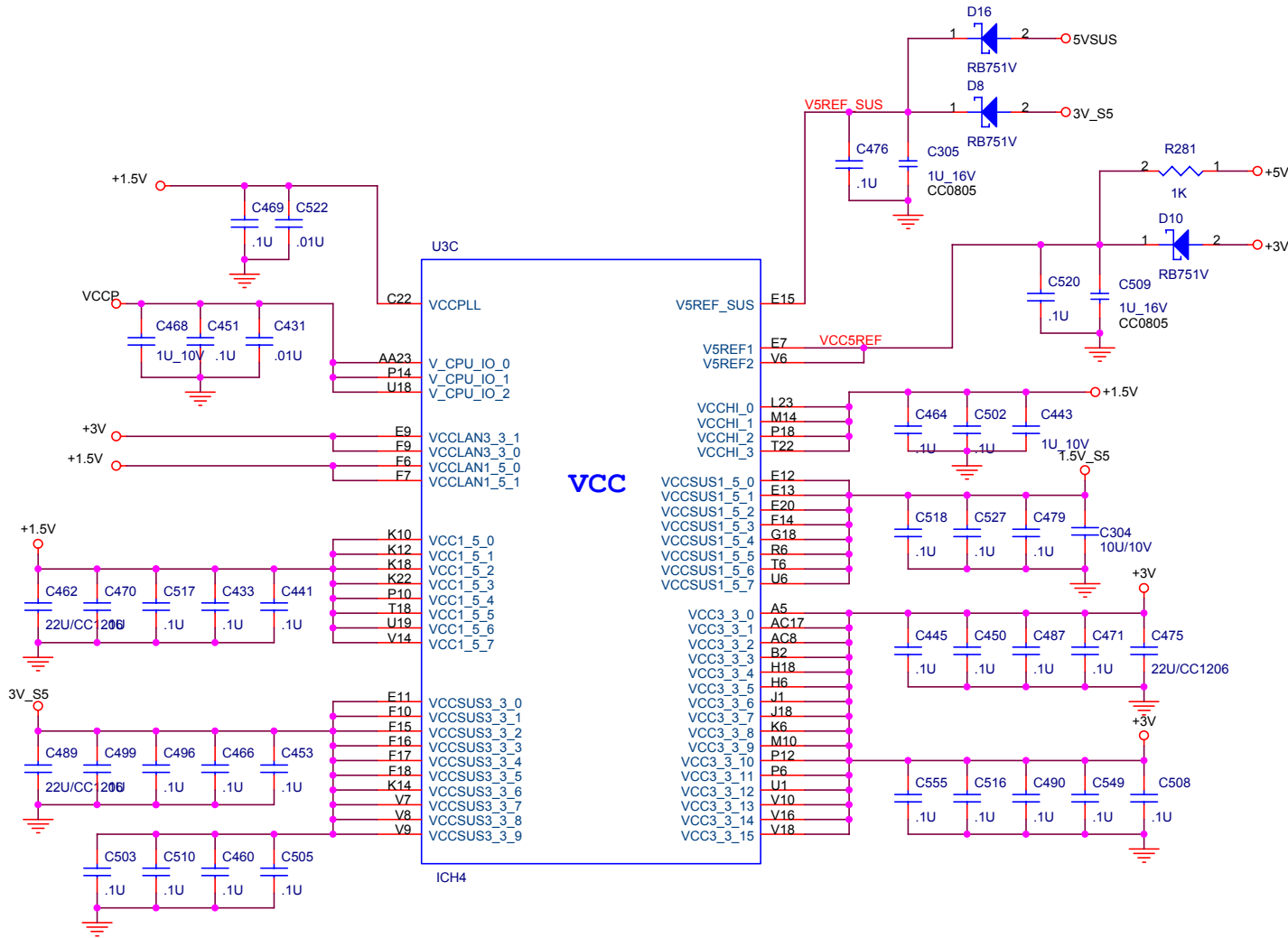
ICH4-M 2/3 (USB, HUB LINK, LPC&FWH,
AC97, SM, PM, MISC&GPIO, LAN)




PROJECT : CT1
Quanta Computer Inc.

Size	Document Number	Rev
Custom	ICH4-M USB,HUB & LPC INTERFACE	1A
Date:	Wednesday, December 15, 2004	Sheet 9 of 38

ICH4-M 3/3 (PWR, GND)



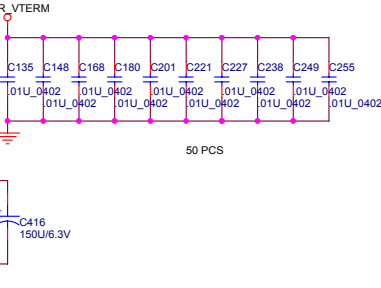
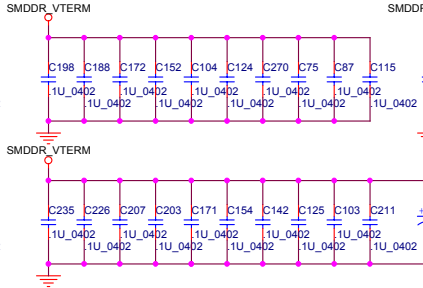
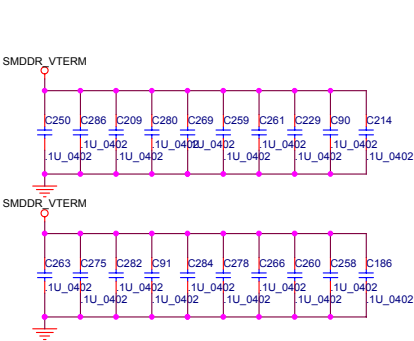
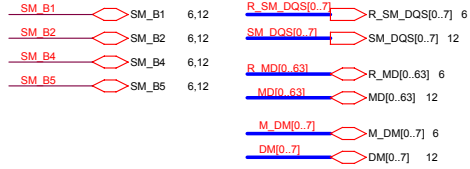
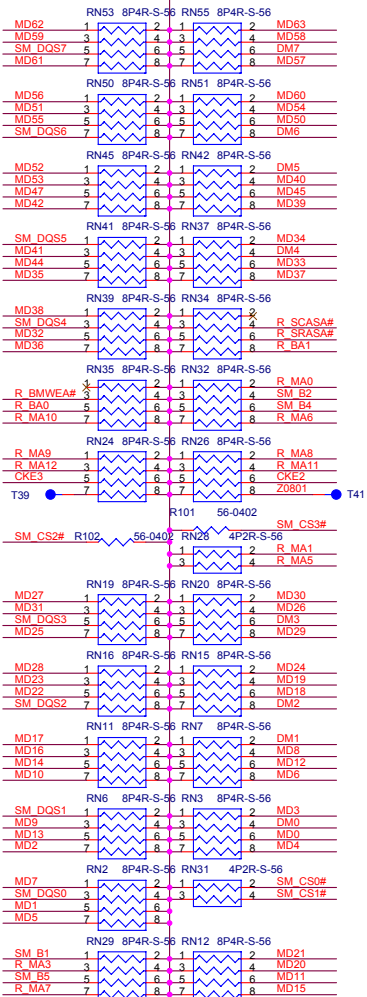


PROJECT : CT1
Quanta Computer Inc.

Size Custom	Document Number ICH4-M (POWER&GND)	Rev 1A
Date: Wednesday, December 15, 2004	Sheet 10	of 38

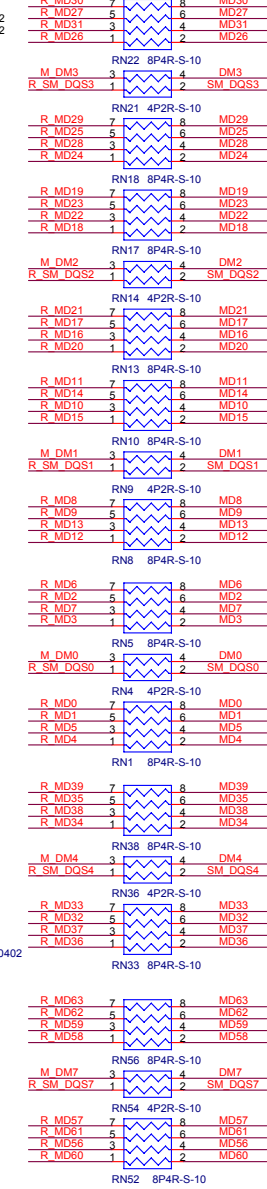
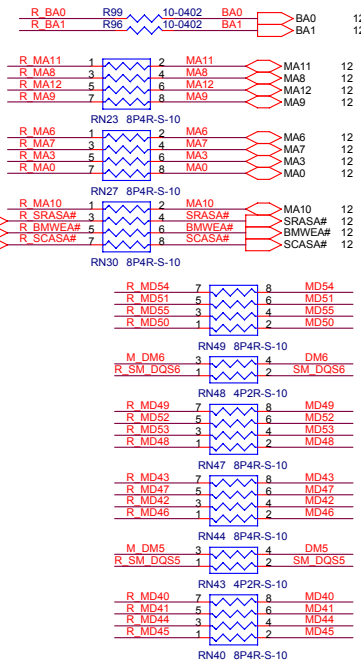
USE 8P4R-0402 package

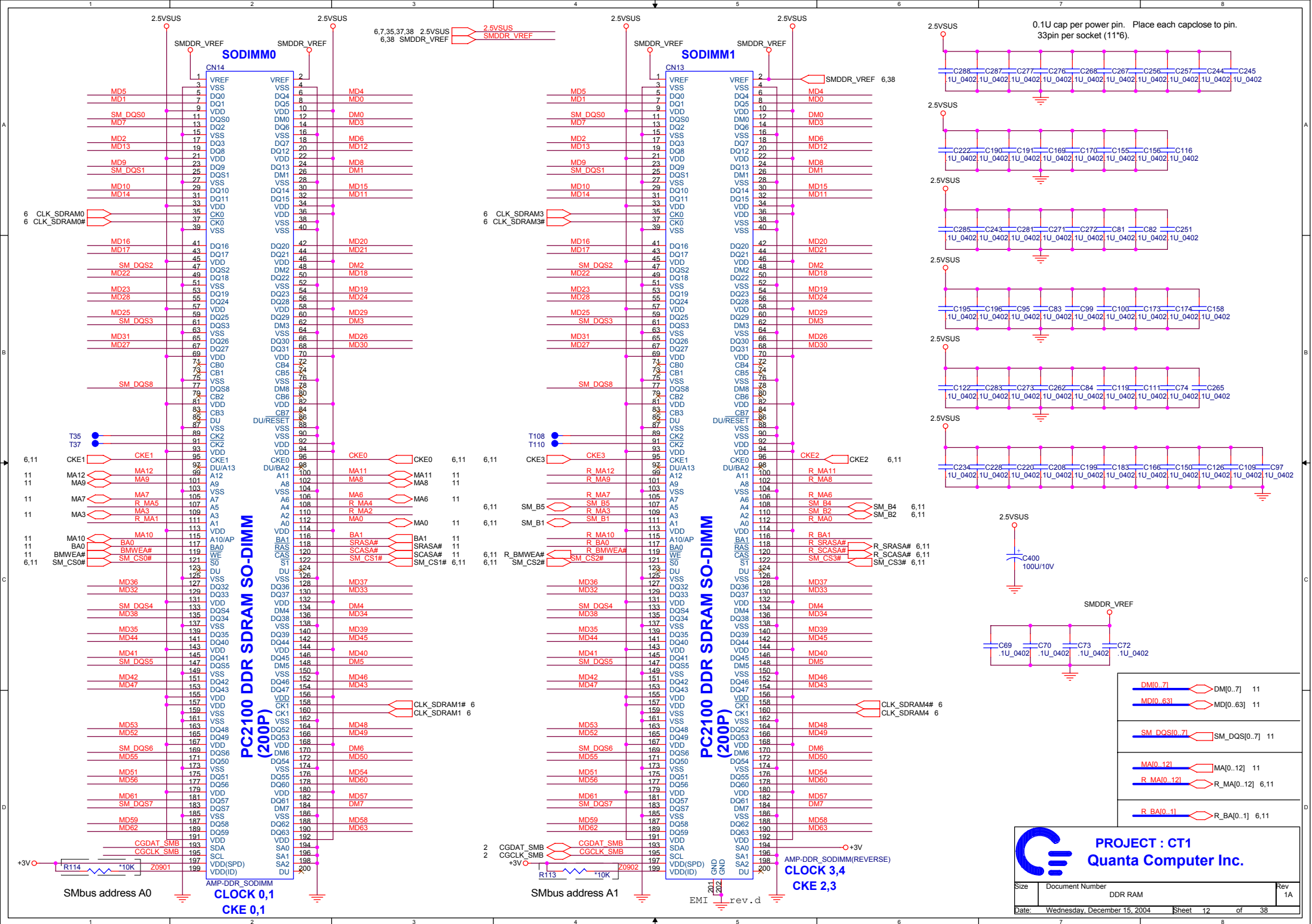
SMDRR_VTERM

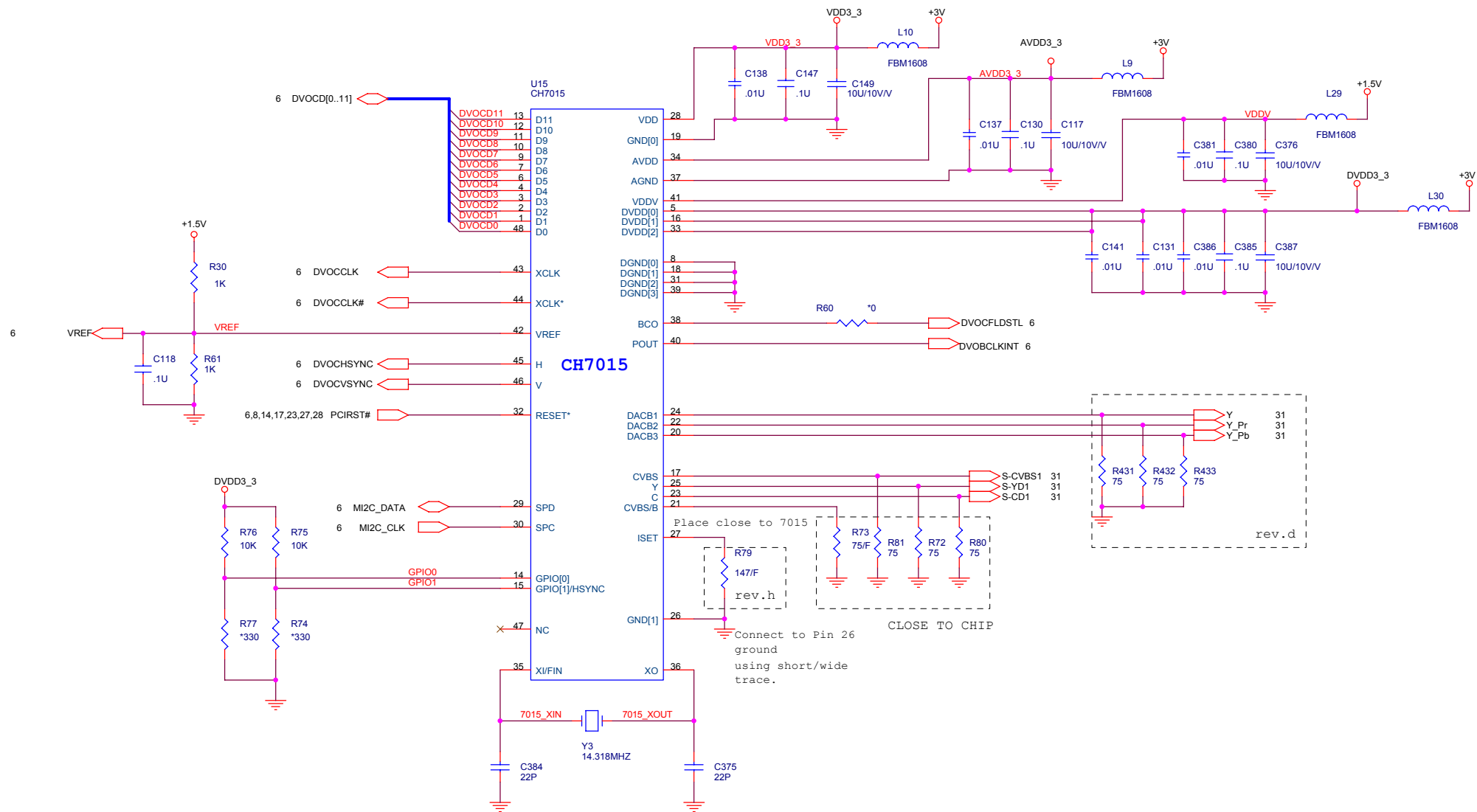


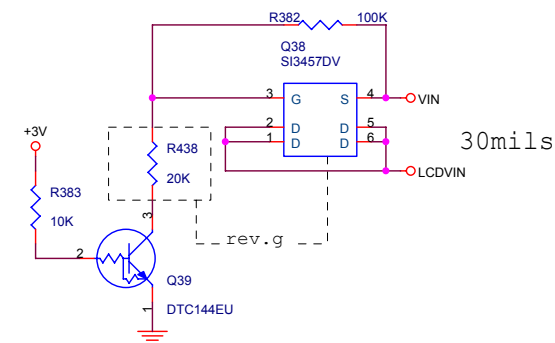
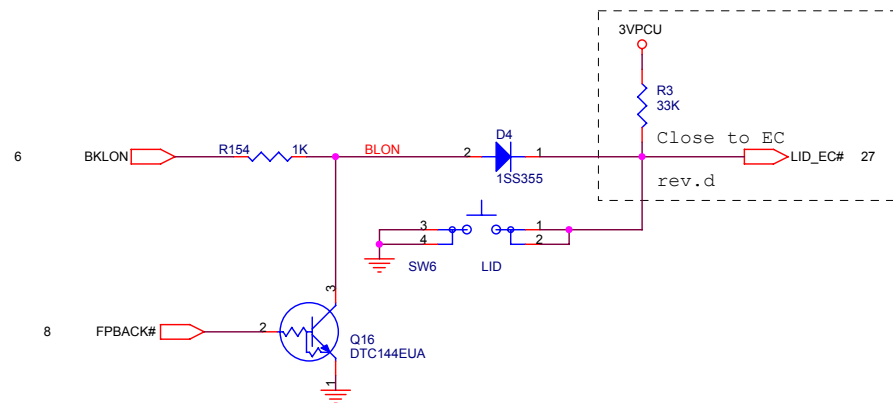
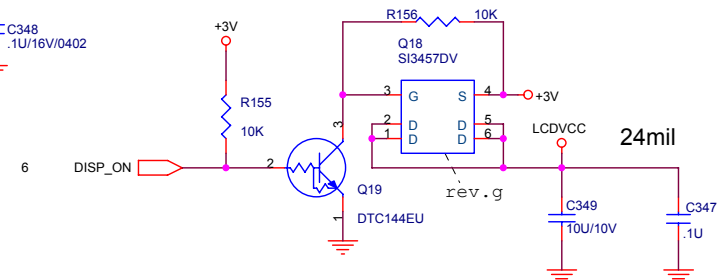
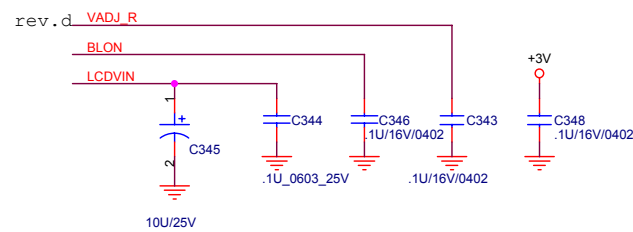
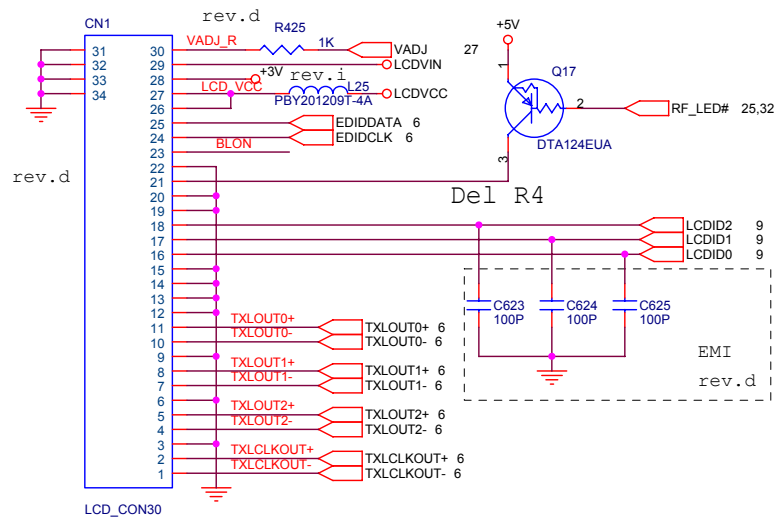
Place Rterms close to second DIMM

6,12 R_SRASA#
6,12 R_BMWWEA#
6,12 R_SCASA#

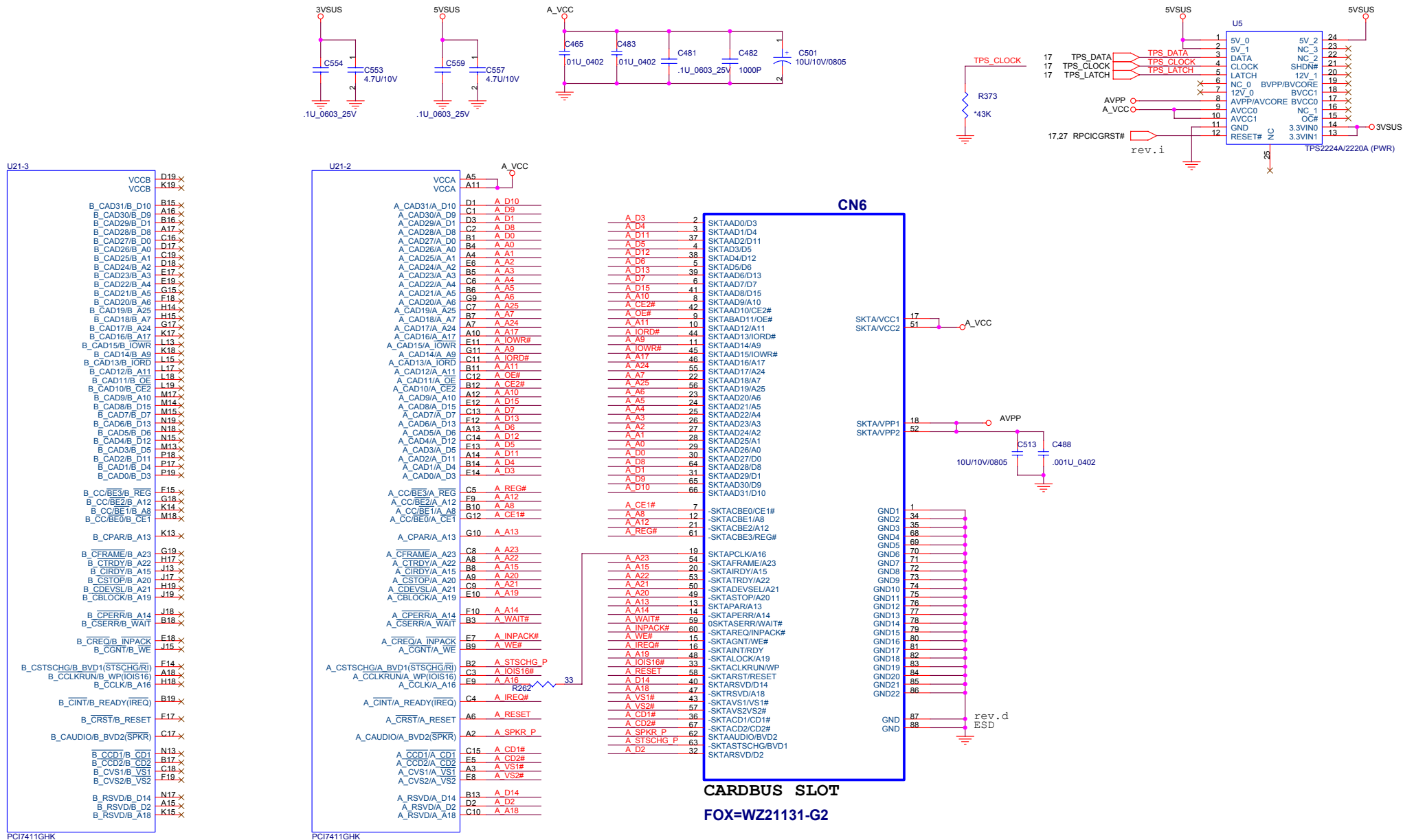




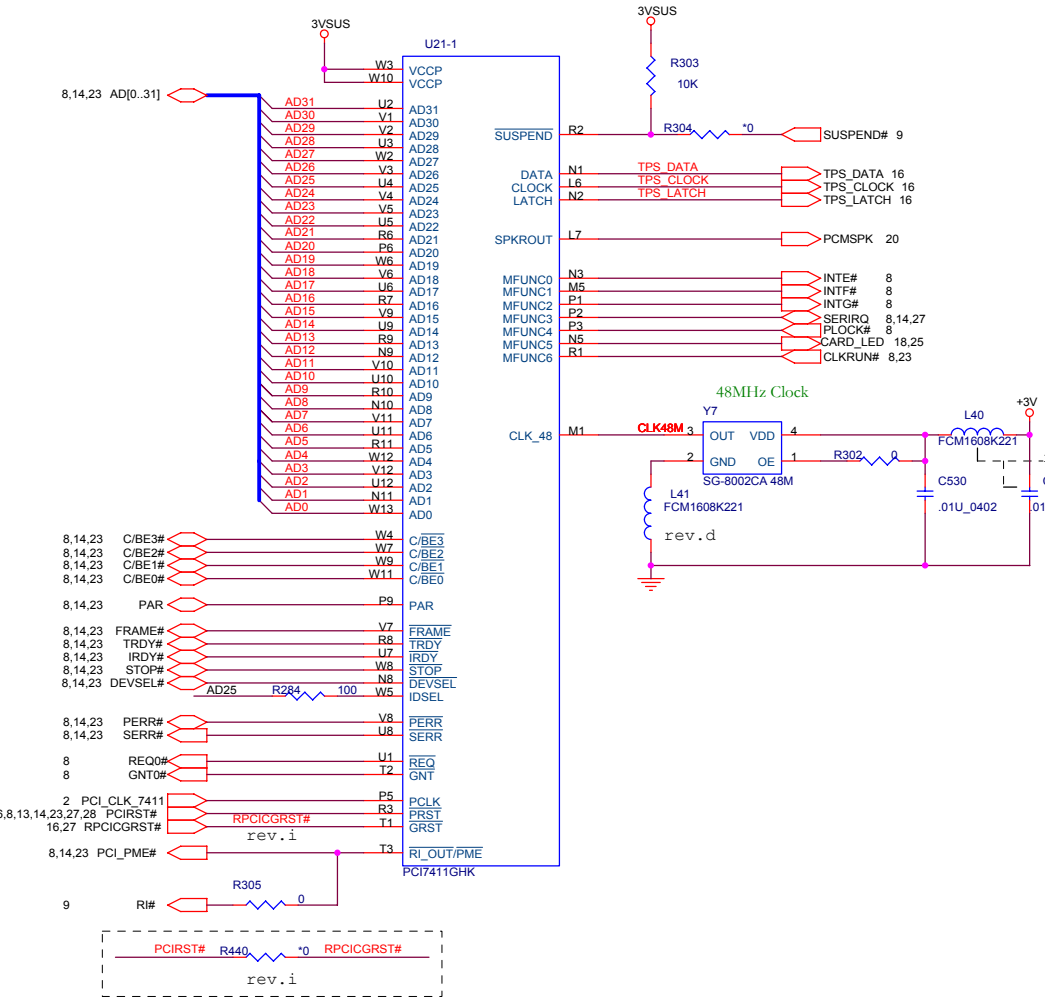




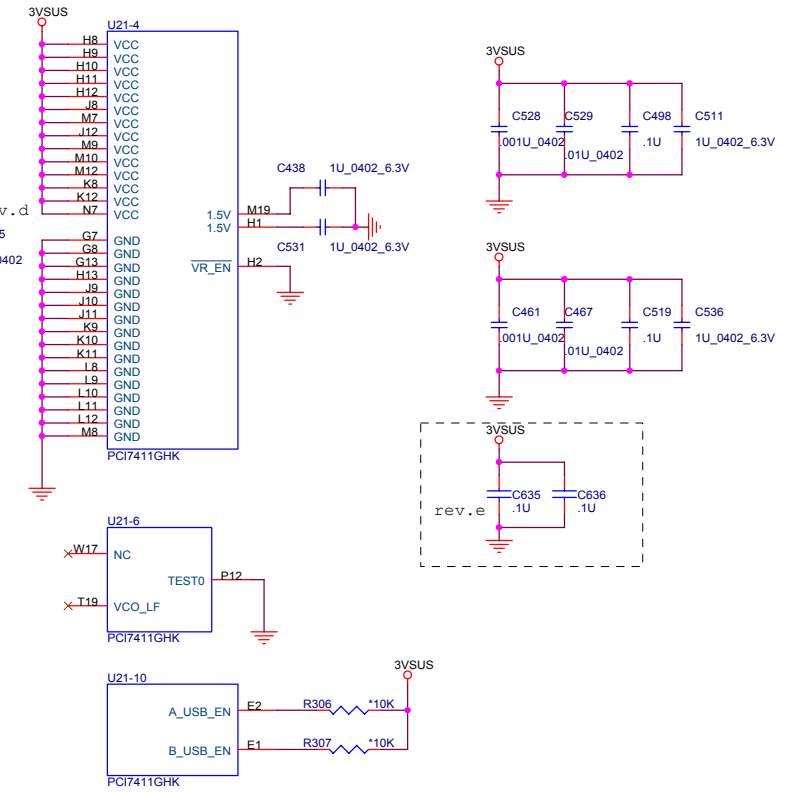
CardBus Connector



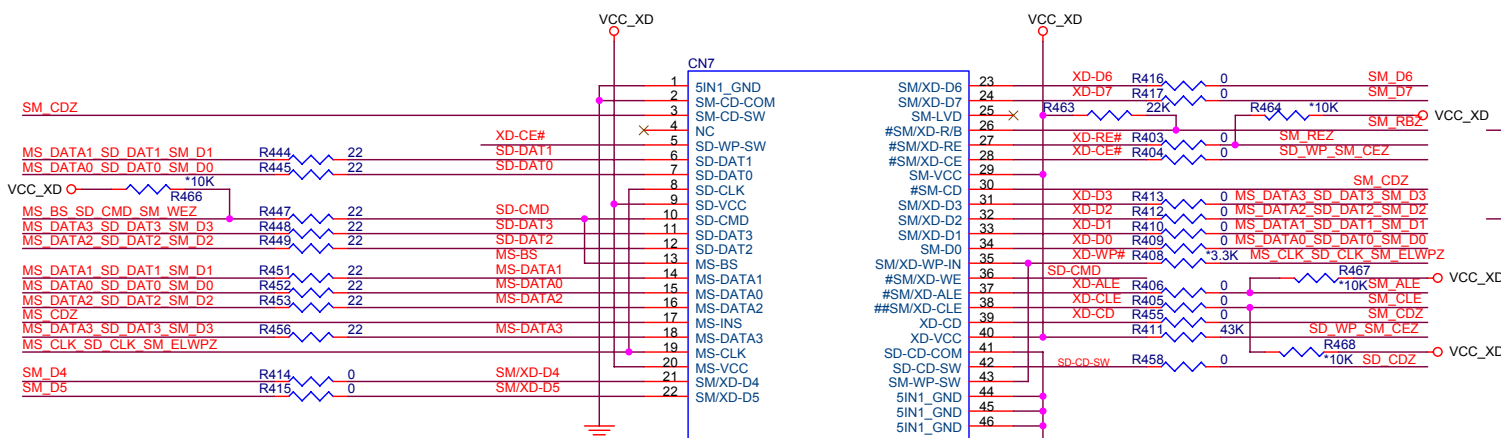
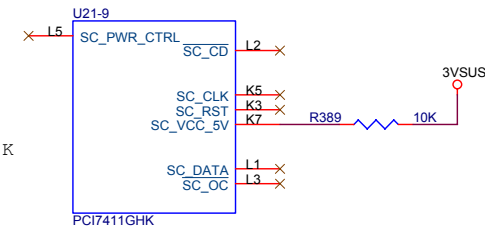
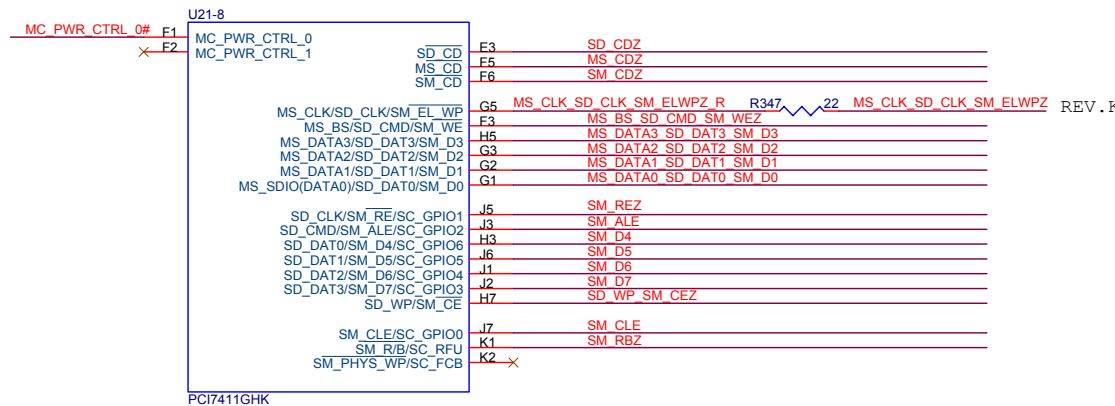
CardBus



PCIXX21 Power Terminals

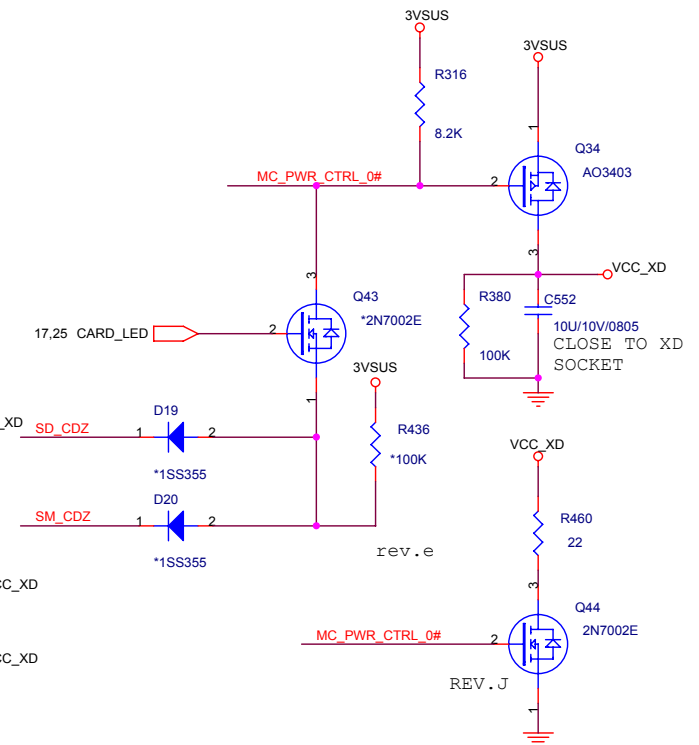
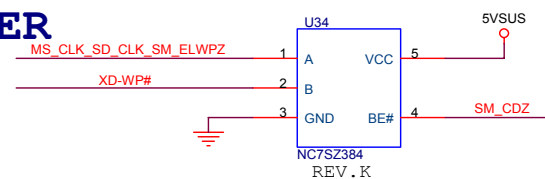


CARD POWER CONTROL



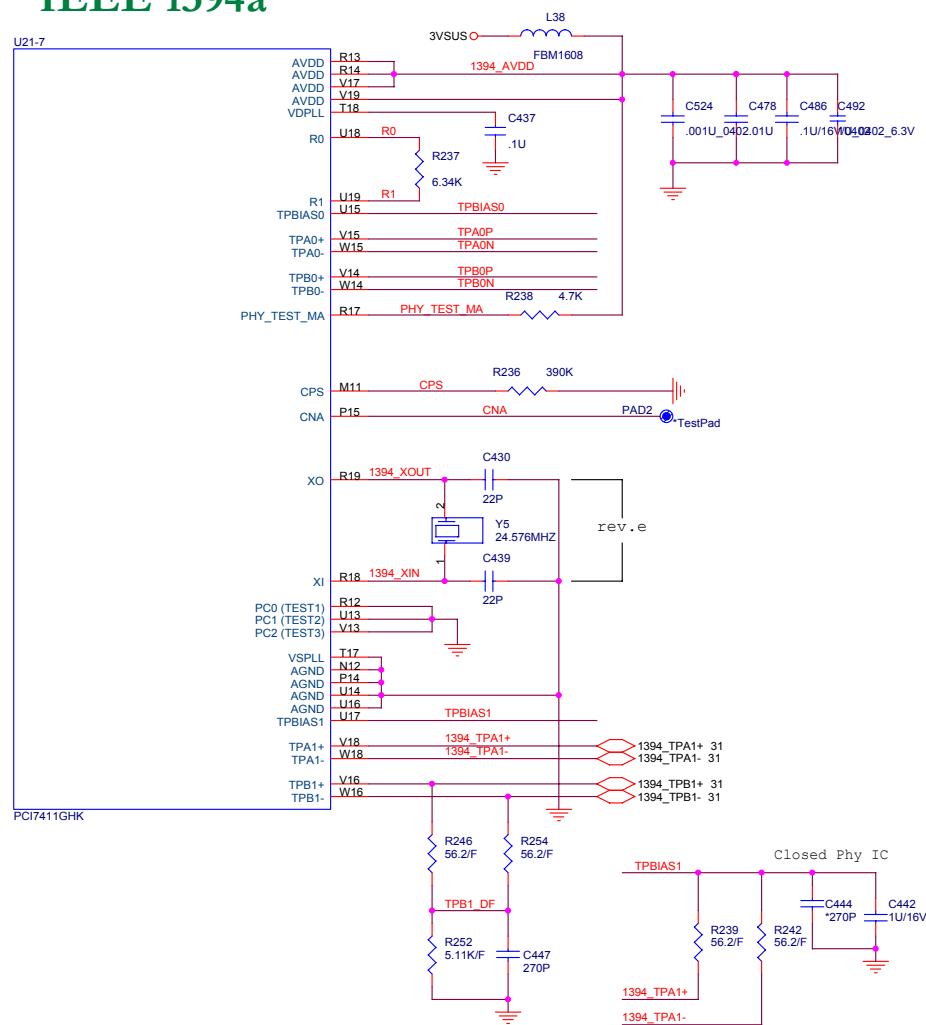
TAITWUN-R007-020-N5-44P

5 IN1 CARD READER

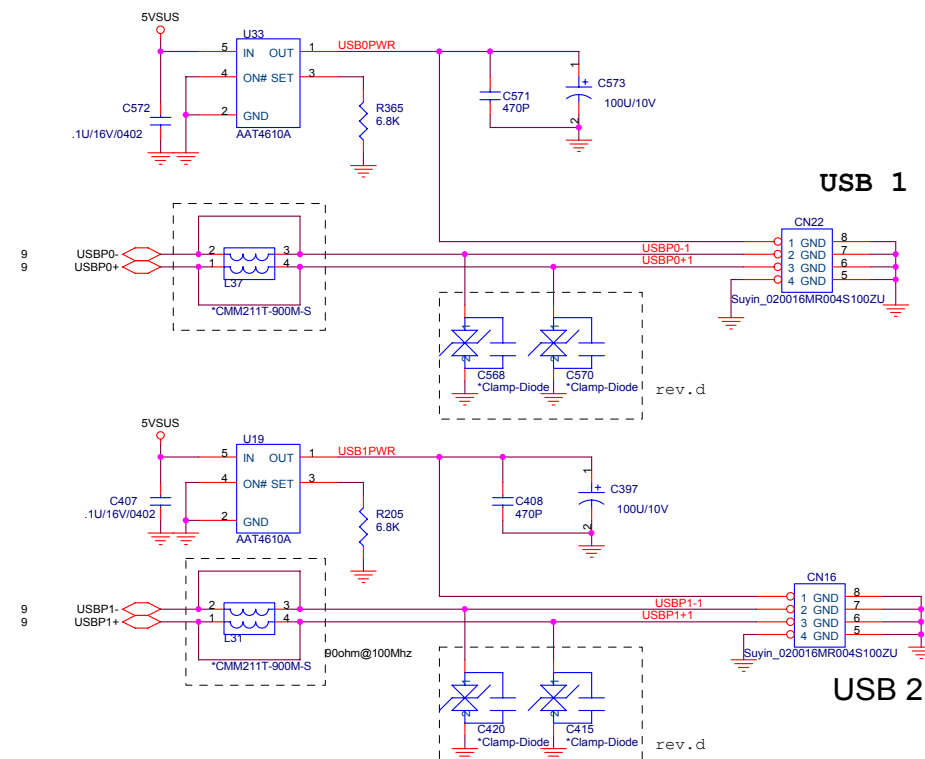
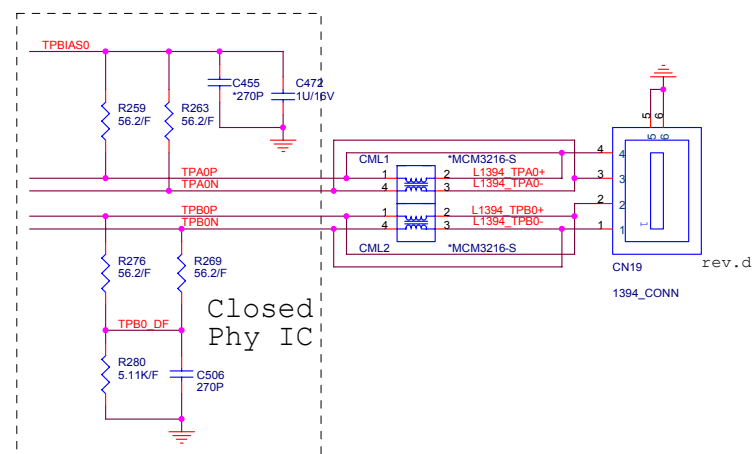


PROJECT : CT1
Quanta Computer Inc.

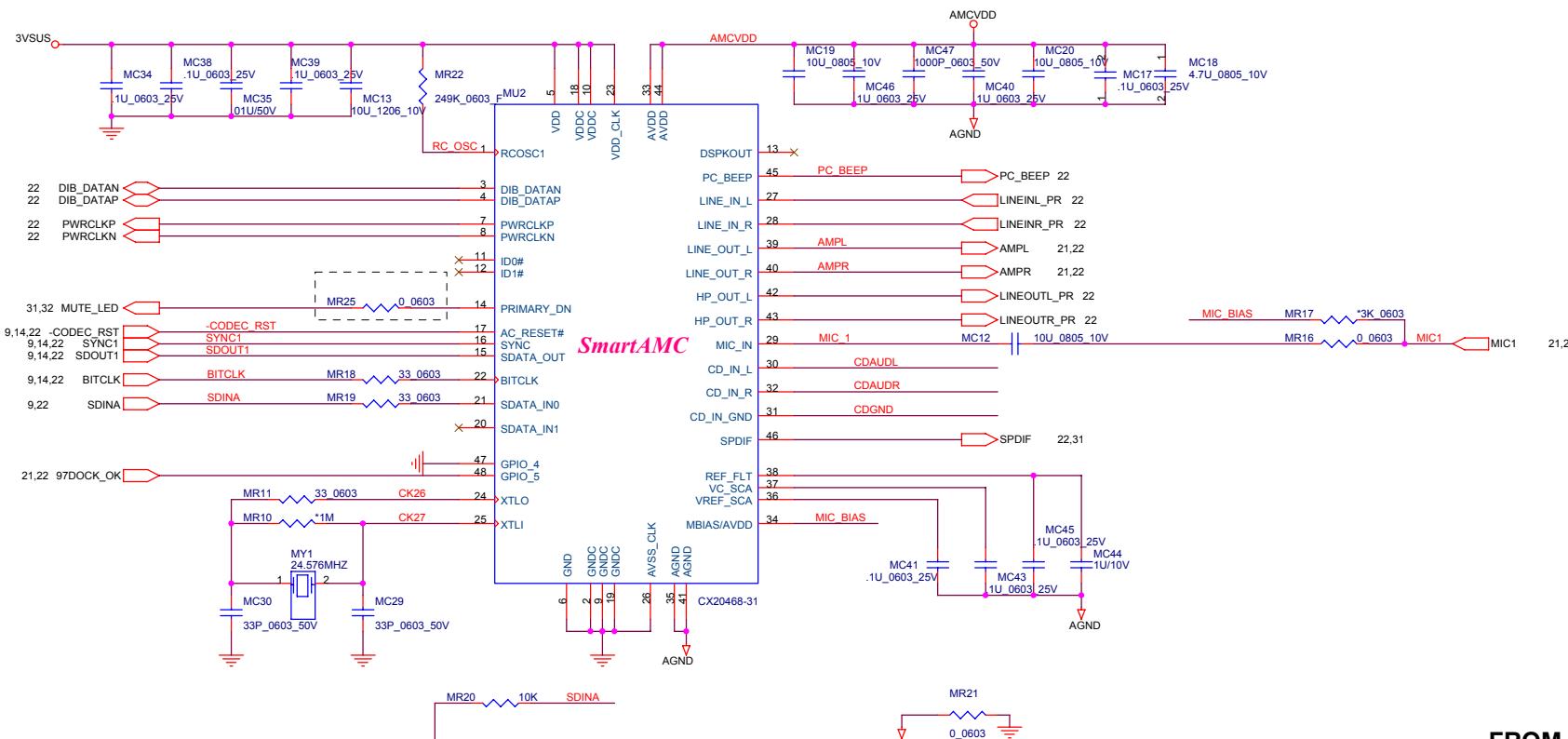
IEEE 1394a



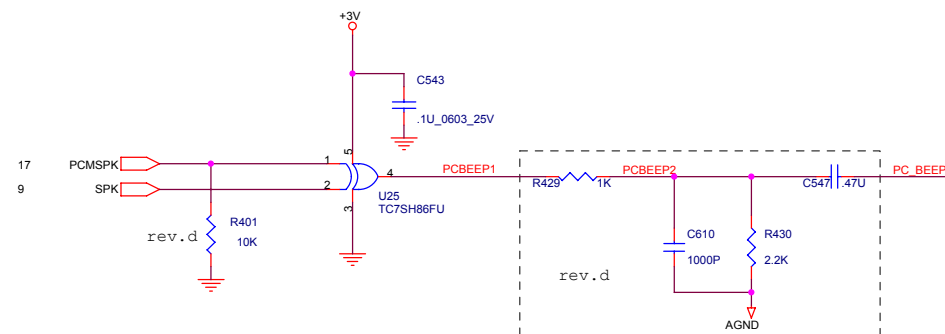
IEEE 1394 CONNECTOR



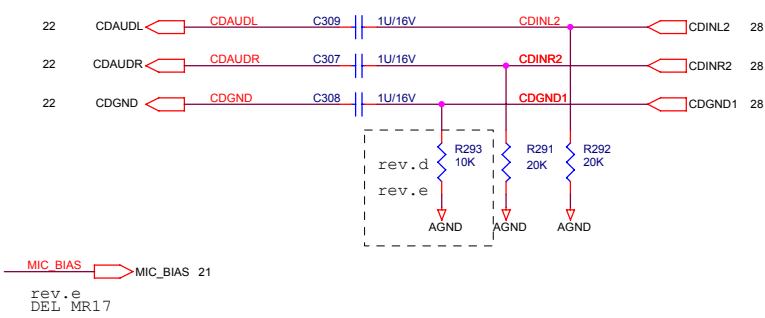
The AMC20493-001 modem is used for mother board family MBAMC20493-010.



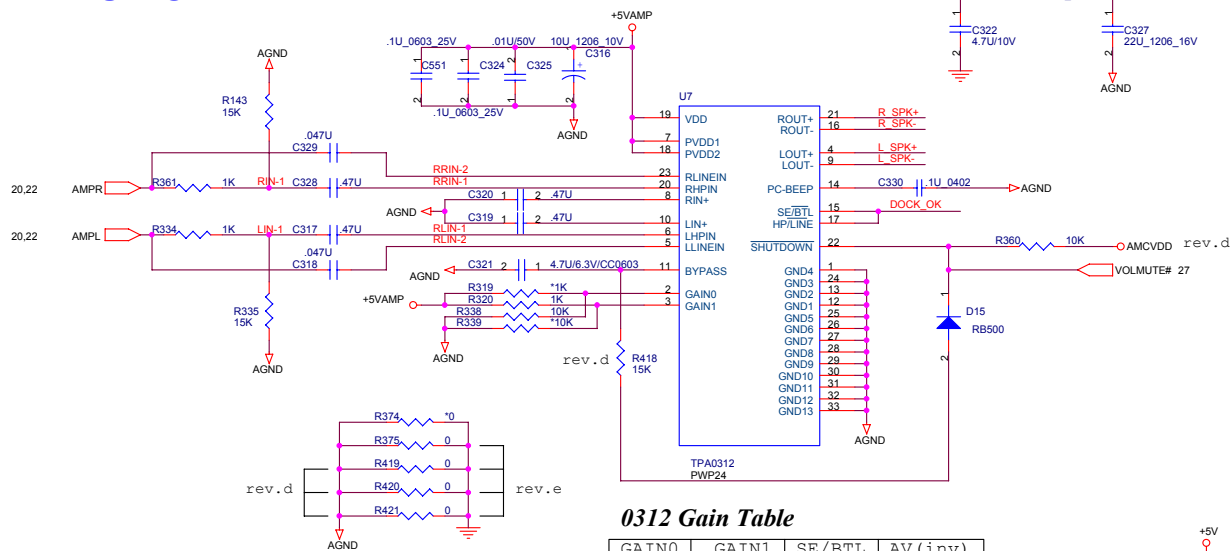
PC SPEAKER



FROM CD-ROM



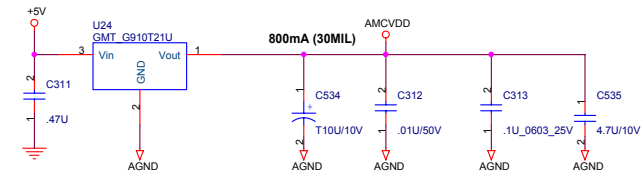
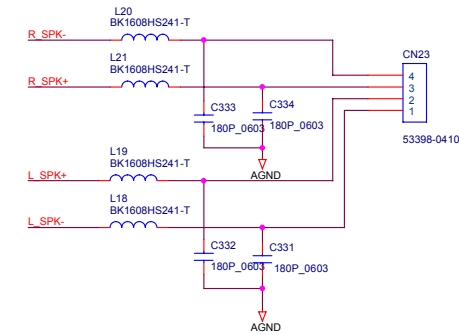
AUDIO AMPLIFIER



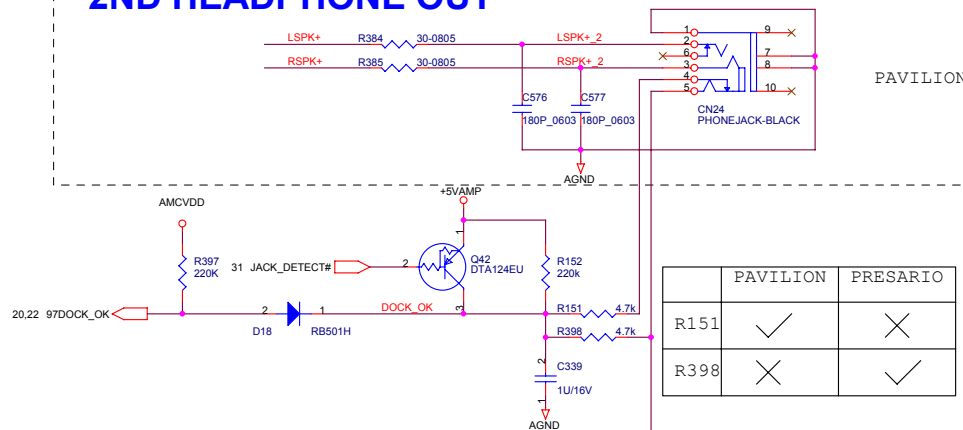
0312 Gain Table

GAIN0	GAIN1	SE/BTL	AV(inv)
0	0	0	6 dB
0	1	0	10 dB
1	0	0	15.6 dB
1	1	0	21.6 dB
X	X	1	4.1 dB

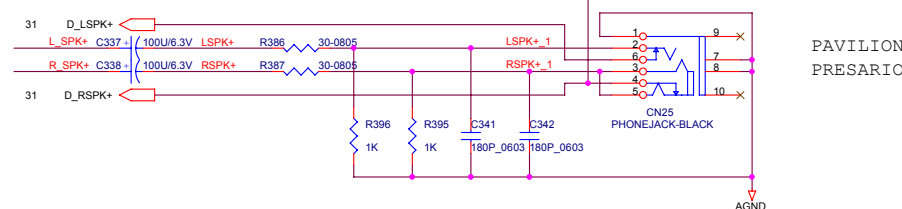
SPEAKER OUT



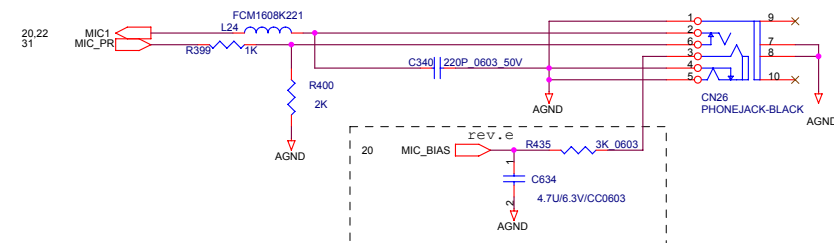
2ND HEADPHONE OUT



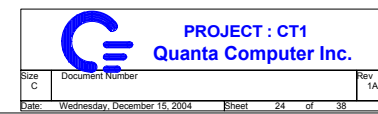
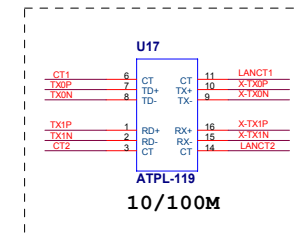
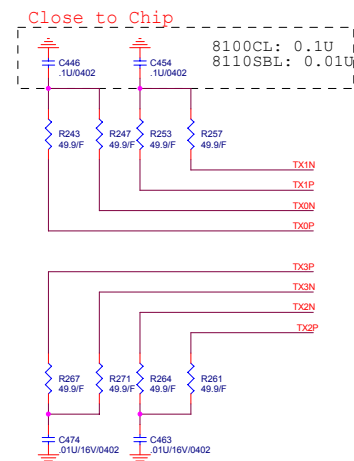
HEADPHONE OUT

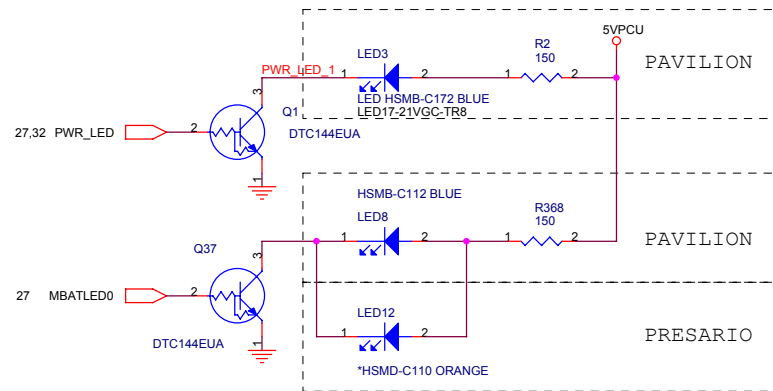


MICROPHONE

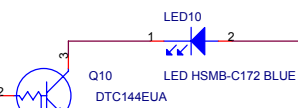
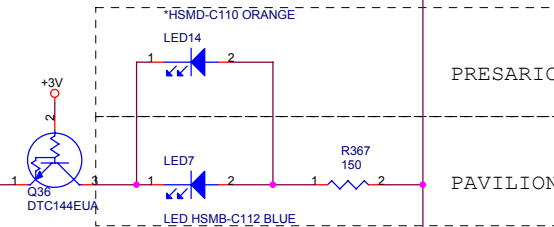
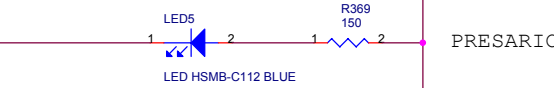
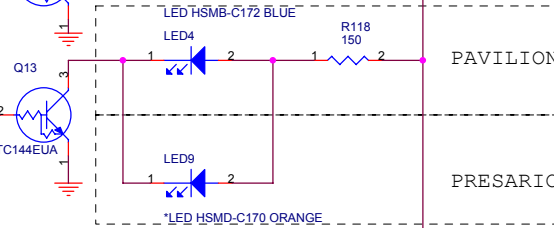
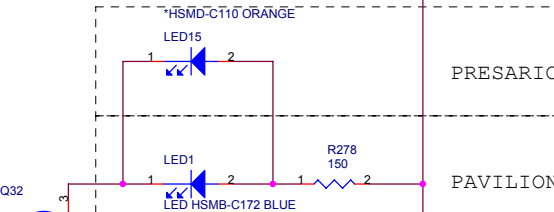
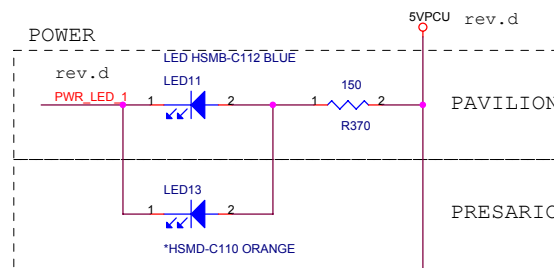
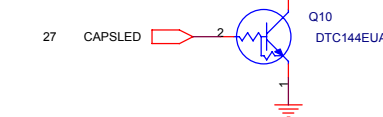
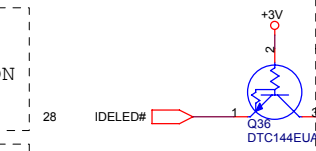
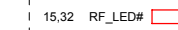
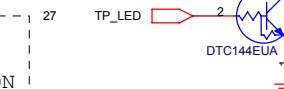
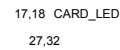
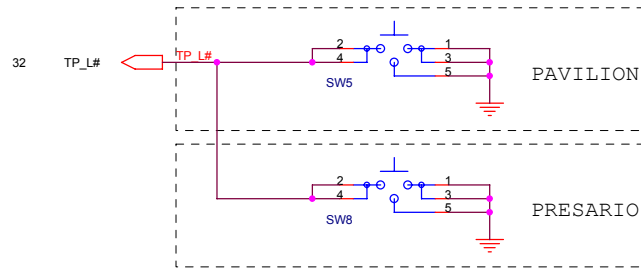
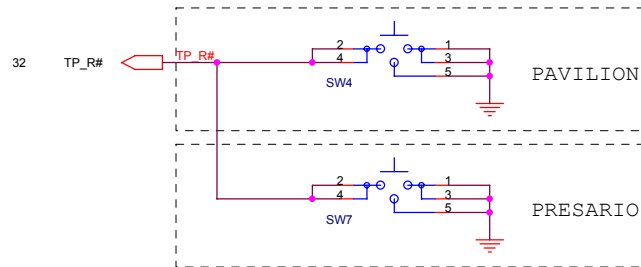
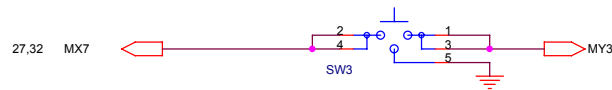


	PAVILION	PRESARIO
R151	✓	✗
R398	✗	✓

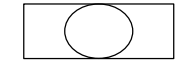




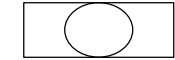
Touchpad control



LED HSMD-C170 ORANGE



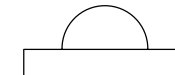
LED HSMB-C172 BLUE



LED HSMD-C110 ORANGE



LED HSMD-C112 BLUE



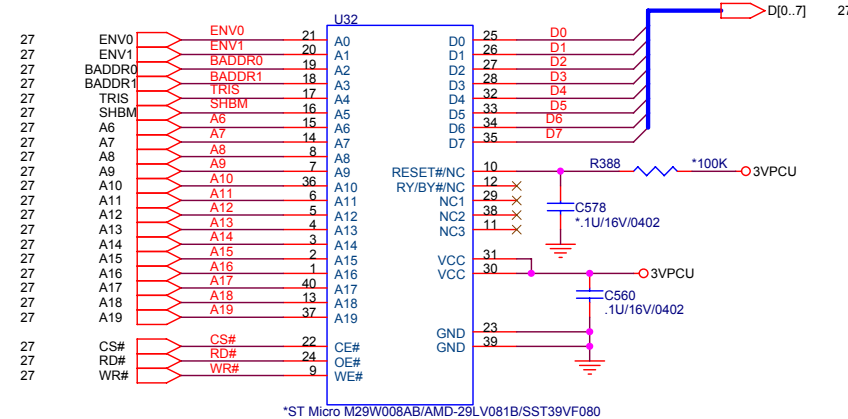
REV.B: LED7 AND LED8 SWAP



PROJECT : CT1
Quanta Computer Inc.

Size	Document Number	Rev
Custom		0.2
Date:	Wednesday, December 15, 2004	Sheet 25 of 38

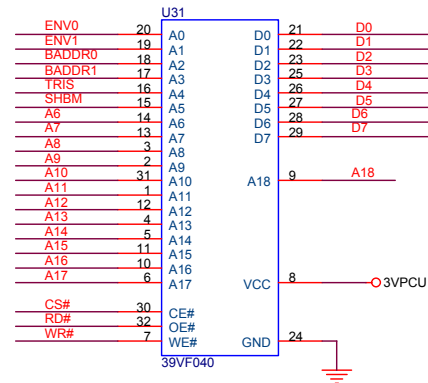
8Mbit (1M Byte), TSSOP40



AMD :Pin 10 is RESET# ; Pin12 is RY/BY#
SST :Pin10,12 are NC

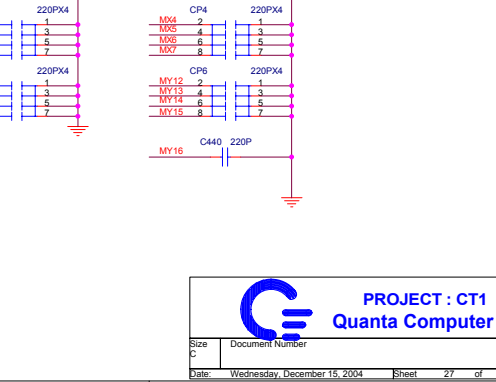
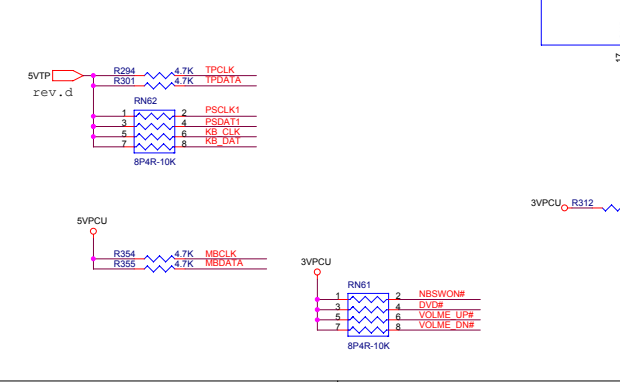
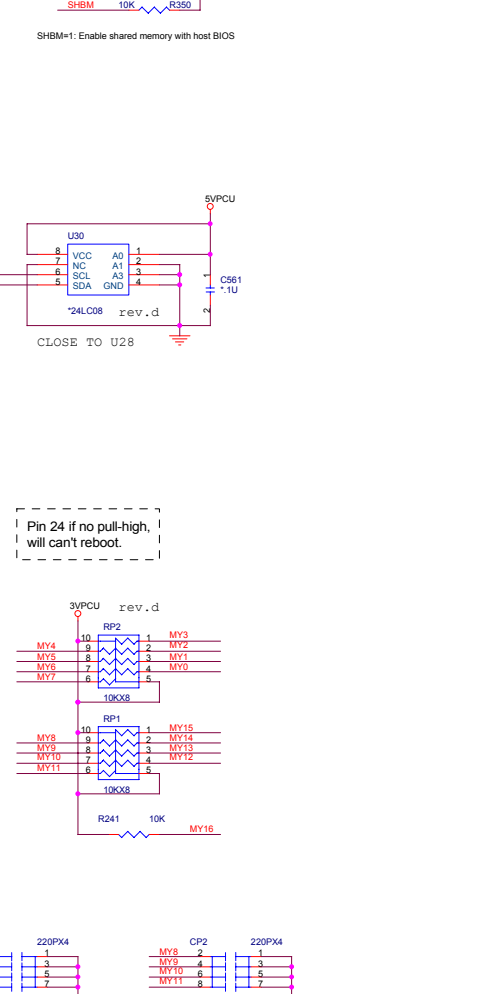
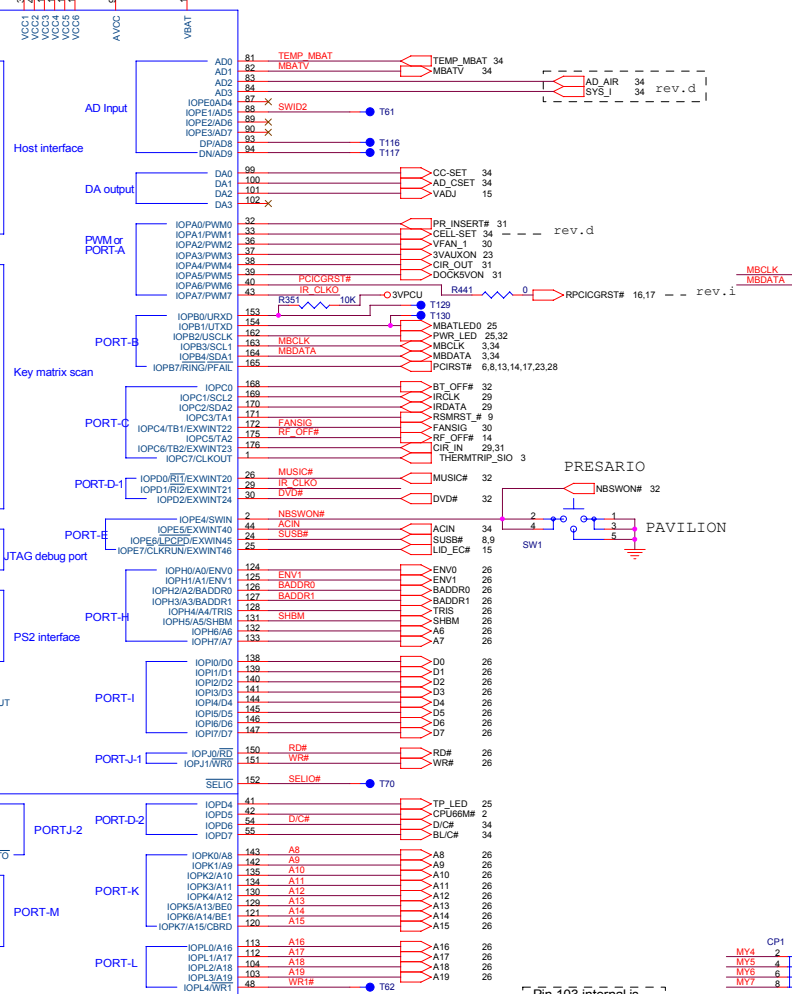
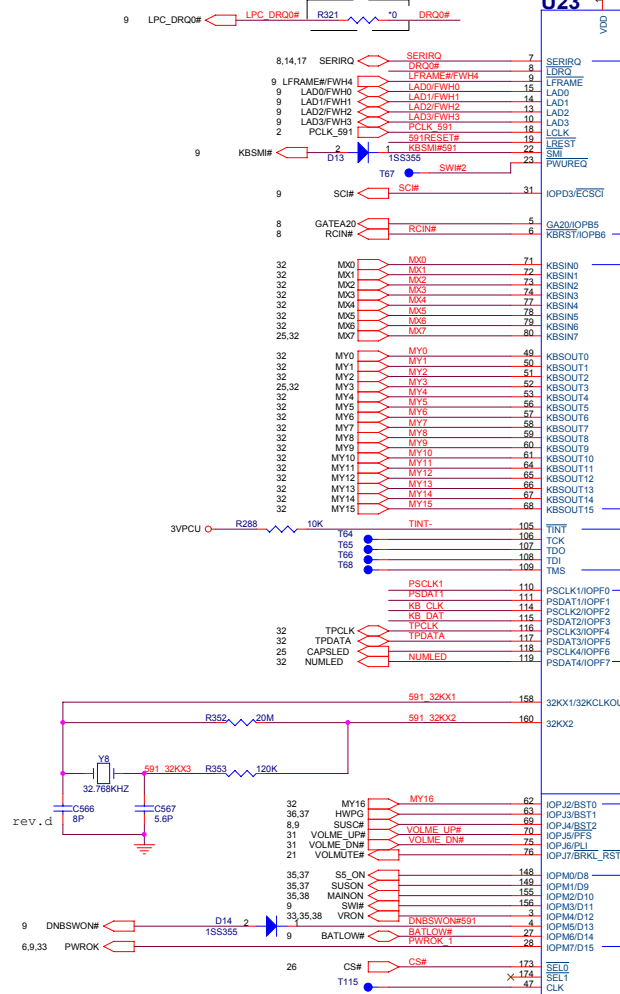
- 1.AMD-29LV081B require MAX 500nS Tready for it's hardware reset.And MAX6326_UR29 has >100mS reset timing.So we can tie it's reset# pin to +3VALW directly.
- 2.SIO has internal 20 mS delay of VCC1_PWROK

4Mbit (512k Byte), TSSOP32



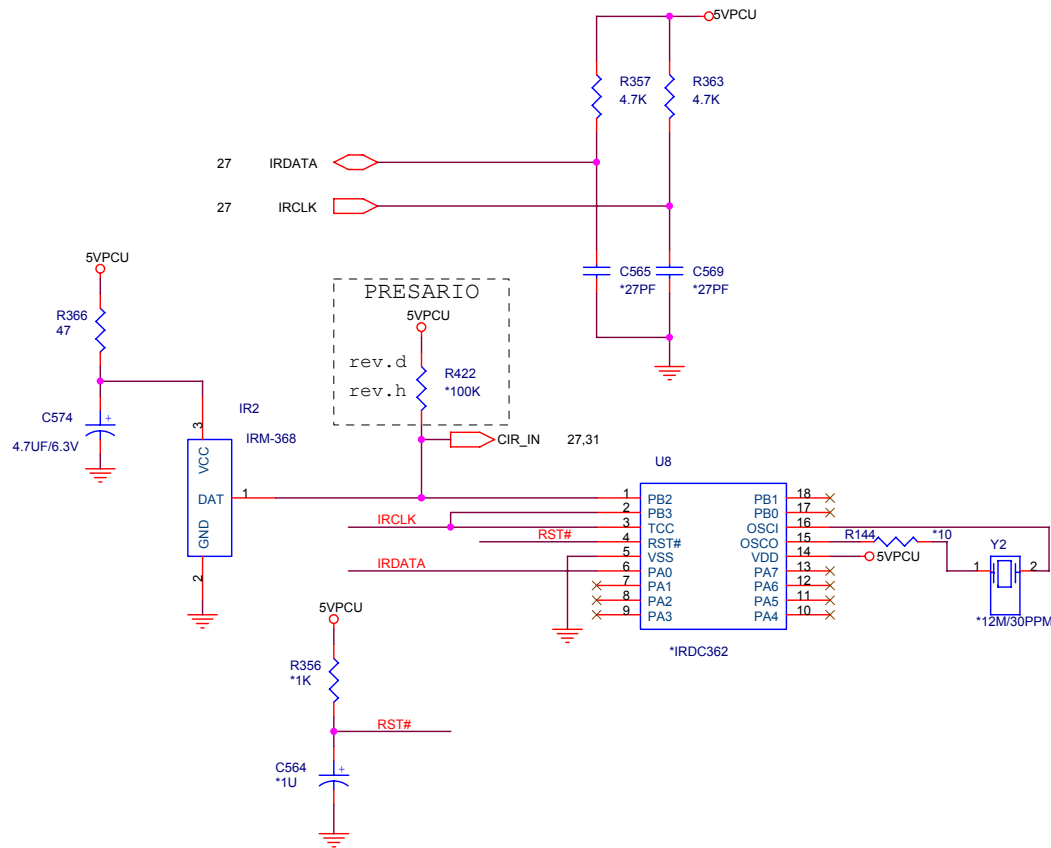
KBC-NS87551L

LDRQ#(pin 8) internal is no use



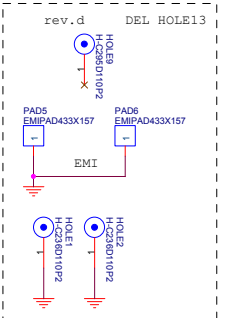
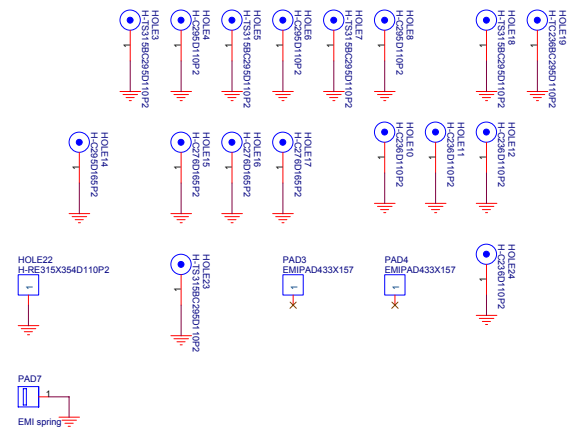
PROJECT : CT1
Quanta Computer Inc.

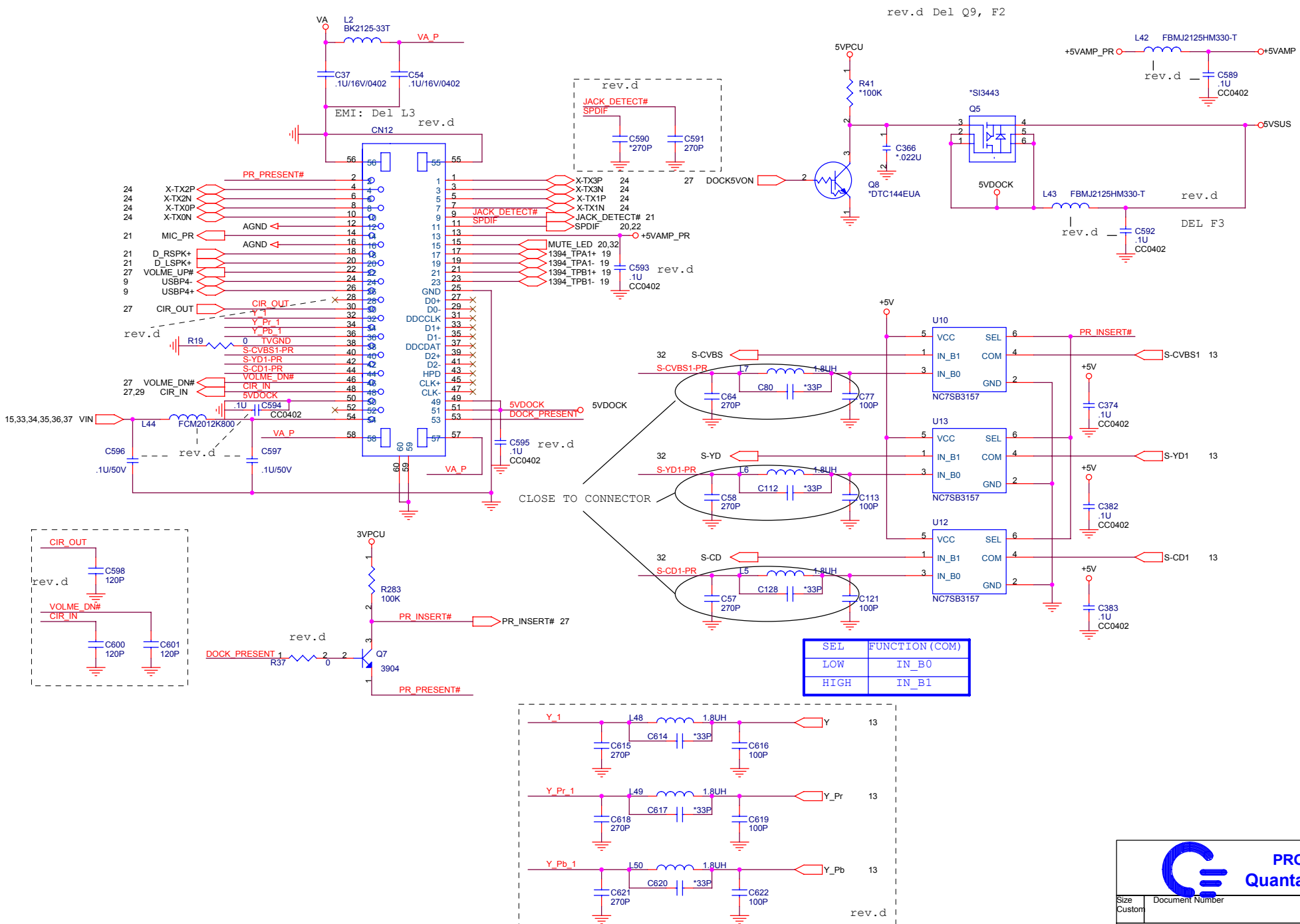
Size	Document Number	Rev
C		0.2
Date	Wednesday, December 15, 2004	Sheet 27 of 38



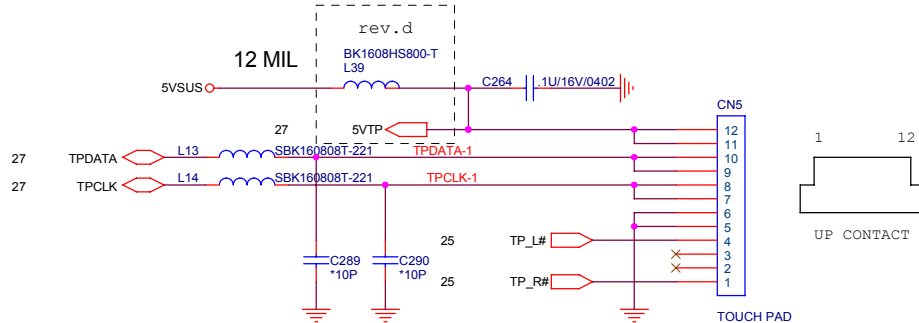
PROJECT : CT1
Quanta Computer Inc.

Size B	Document Number	Rev 1A
Date:	Wednesday, December 15, 2004	Sheet 29 of 38



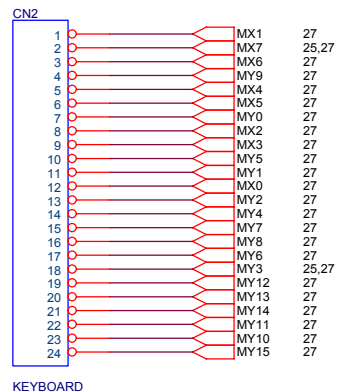


TOUCH PAD CONNECTOR



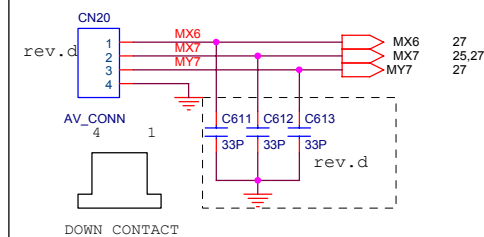
CHECK PIN DEFINE

KEYBOARD CONNECTOR



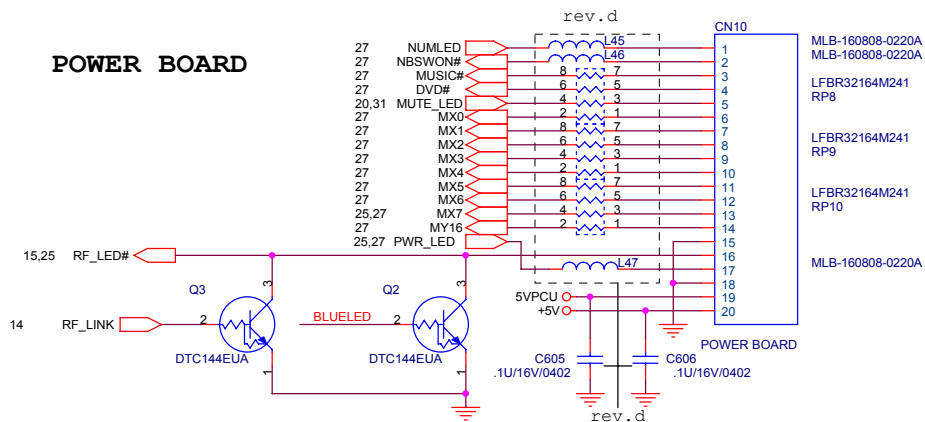
KEYBOARD

AV BOARD



MX6	MX7
ENTER	MENU

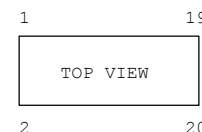
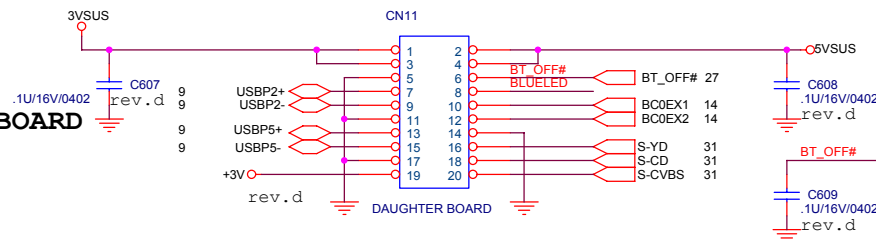
POWER BOARD




DOWN CONTACT

MX0	MX1	MX2	MX3	MX4	MX5	MX6	MX7
BACK	PLAY/PAUSE	FORWARD	STOP	VOL UP	MUTE	VOL DN	WIRELESS

DAUGHTER BOARD





PROJECT : CT1
Quanta Computer Inc.

Size	Document Number	Rev
Custom	MDC	1A

Date: Wednesday, December 15, 2004 Sheet 32 of 38

4ms delay to ICH4-M.

0.748V for suspend mode
(Deeper sleep)

SUSPEND MODE (SUS=HIGH)

S2	S1	S0	Output
✓ OPEN	VCC	GND	0.748V

VCC_BOOT

B2	B1	B0	Output
GND	GND	GND	1.708V
REF	REF	REF	1.372V
OPEN	OPEN	OPEN	1.036V
VCC	VCC	VCC	0.700V
REF	VCC	VCC	1.212V

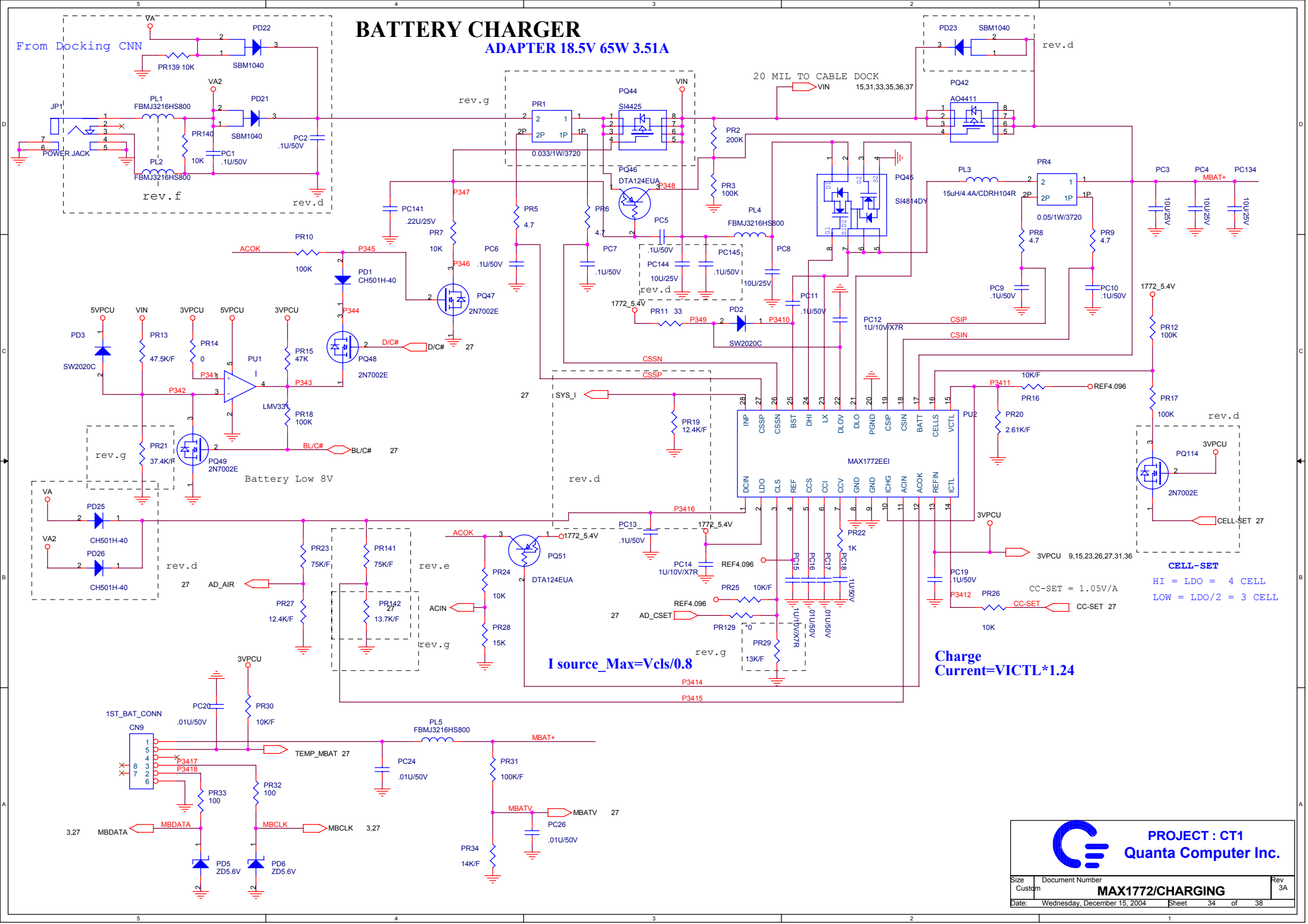
D5	D4	D3	D2	D1	D0	Output	D5	D4	D3	D2	D1	D0	Output
1	0	0	0	0	0	1.196V	0	0	0	0	0	0	1.708V
1	0	0	0	0	1	1.180V	0	0	0	0	0	1	1.692V
1	0	0	0	1	0	1.164V	0	0	0	0	1	0	1.676V
1	0	0	0	1	1	1.148V	0	0	0	0	1	1	1.660V
1	0	0	1	0	0	1.132V	0	0	0	1	0	0	1.644V
1	0	0	1	0	1	1.116V	0	0	0	1	0	1	1.628V
1	0	0	1	1	0	1.100V	0	0	0	1	1	0	1.612V
1	0	0	1	1	1	1.084V	0	0	0	1	1	1	1.596V
1	0	1	0	0	0	1.068V	0	0	1	0	0	0	1.580V
1	0	1	0	0	1	1.052V	0	0	1	0	0	1	1.564V
1	0	1	0	1	0	1.036V	0	0	1	0	1	0	1.548V
1	0	1	0	1	1	1.020V	0	0	1	0	1	1	1.532V
1	0	1	1	0	0	1.004V	0	0	1	1	0	0	1.516V
1	0	1	1	0	1	0.988V	0	0	1	1	0	1	1.500V
1	0	1	1	1	0	0.972V	0	0	1	1	1	0	1.484V
1	0	1	1	1	1	0.956V	0	0	1	1	1	1	1.468V
1	1	0	0	0	0	0.940V	0	1	0	0	0	0	1.452V
1	1	0	0	0	1	0.924V	0	1	0	0	0	1	1.436V
1	1	0	0	1	0	0.908V	0	1	0	0	1	0	1.420V
1	1	0	0	1	1	0.892V	0	1	0	0	1	1	1.404V
1	1	0	1	0	0	0.876V	0	1	0	1	0	0	1.388V
1	1	0	1	0	1	0.860V	0	1	0	1	0	1	1.372V
1	1	0	1	1	0	0.844V	0	1	0	1	1	0	1.356V
1	1	0	1	1	1	0.828V	0	1	0	1	1	1	1.340V
1	1	1	0	0	0	0.812V	0	1	1	0	0	0	1.324V
1	1	1	0	0	1	0.796V	0	1	1	0	0	1	1.308V
1	1	1	0	1	0	0.780V	0	1	1	0	1	0	1.292V
1	1	1	0	1	1	0.764V	0	1	1	0	1	1	1.276V
1	1	1	1	0	0	0.748V	0	1	1	1	0	0	1.260V
1	1	1	1	0	1	0.732V	0	1	1	1	0	1	1.244V
1	1	1	1	1	0	0.716V	0	1	1	1	1	0	1.228V
1	1	1	1	1	1	0.700V	0	1	1	1	1	1	1.212V



PROJECT : CT1
Quanta Computer Inc.

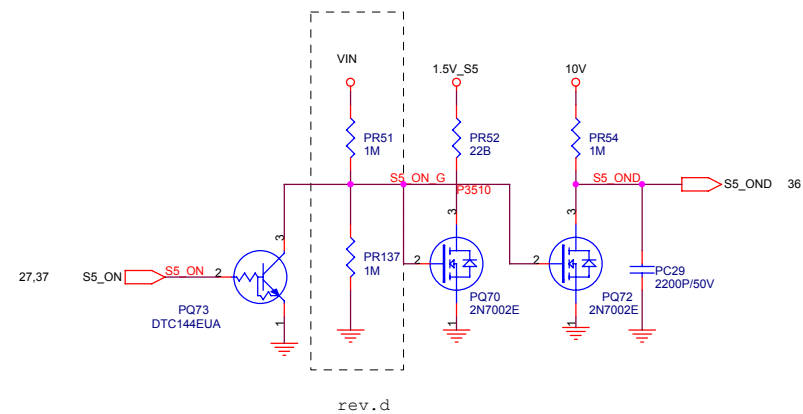
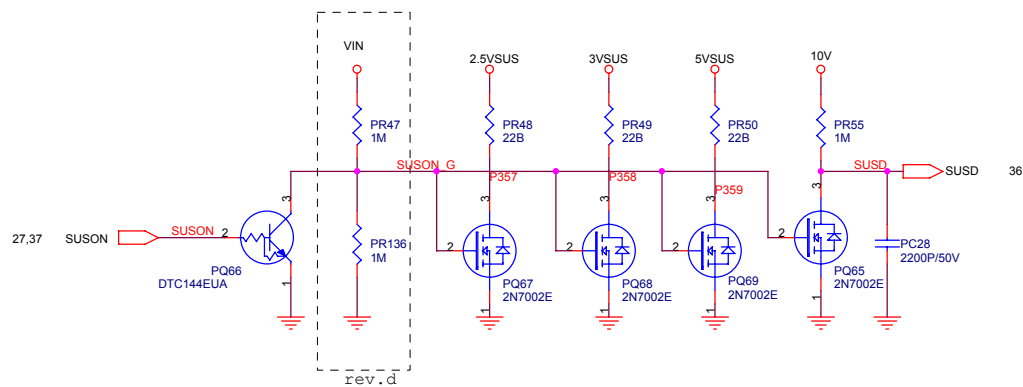
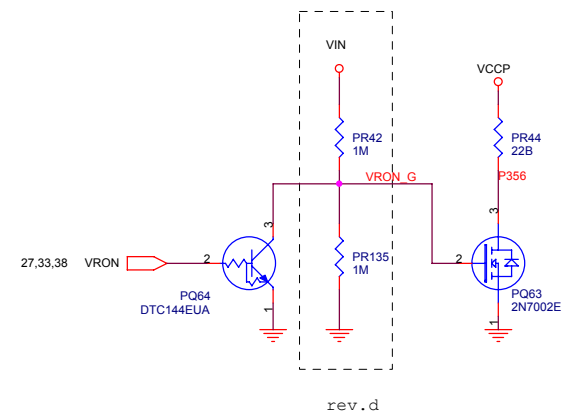
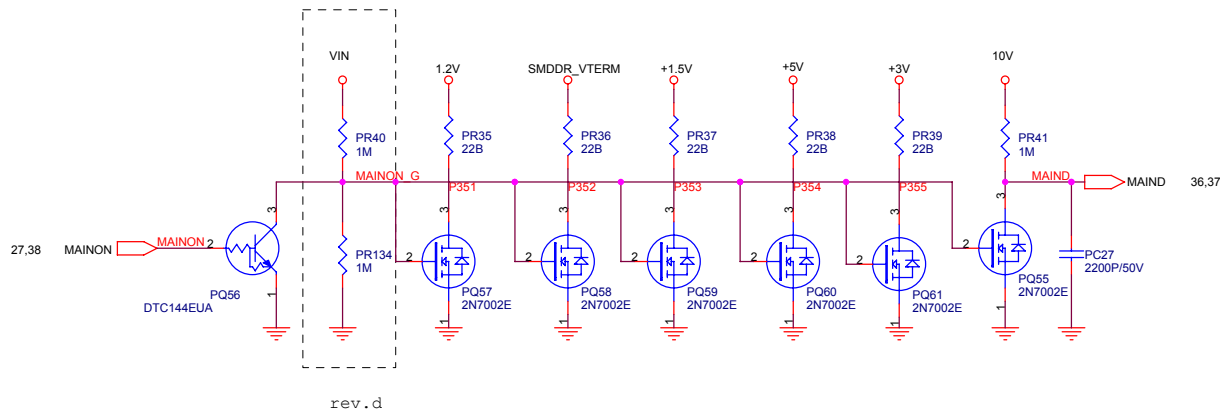
BATTERY CHARGER

ADAPTER 18.5V 65W 3.51A



PROJECT : CT1
Quanta Computer Inc.

Size	Document Number	Rev
Custom	MAX1772/CHARGING	3A
Date:	Wednesday, December 15, 2004	Sheet 34 of 38



PROJECT : CT1
Quanta Computer Inc.

Size	Document Number	Rev
Custom		3A
DISCHARGE		
Date:	Wednesday, December 15, 2004	Sheet 35 of 38

